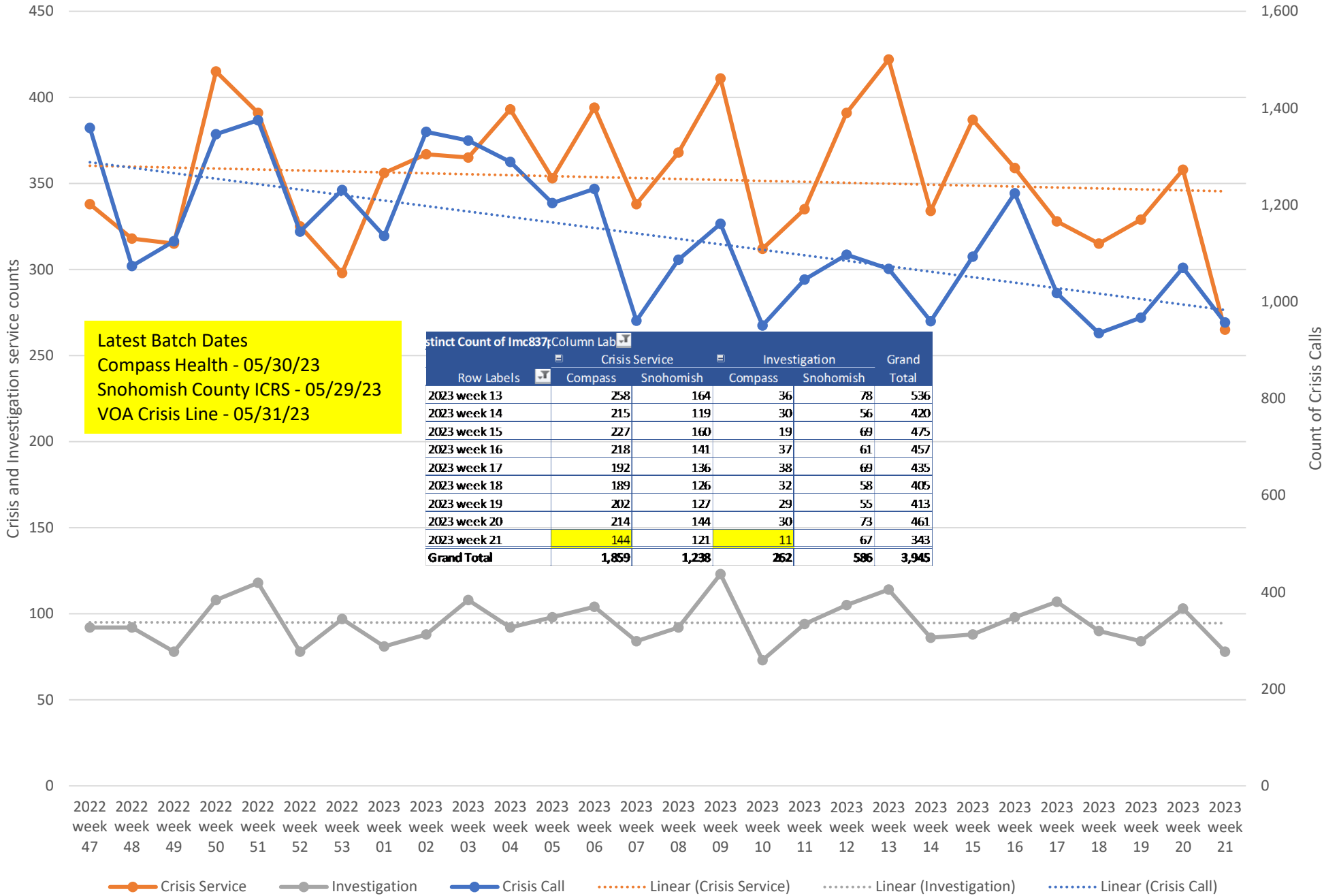




Weekly Crisis Capacity Indicator Snapshot

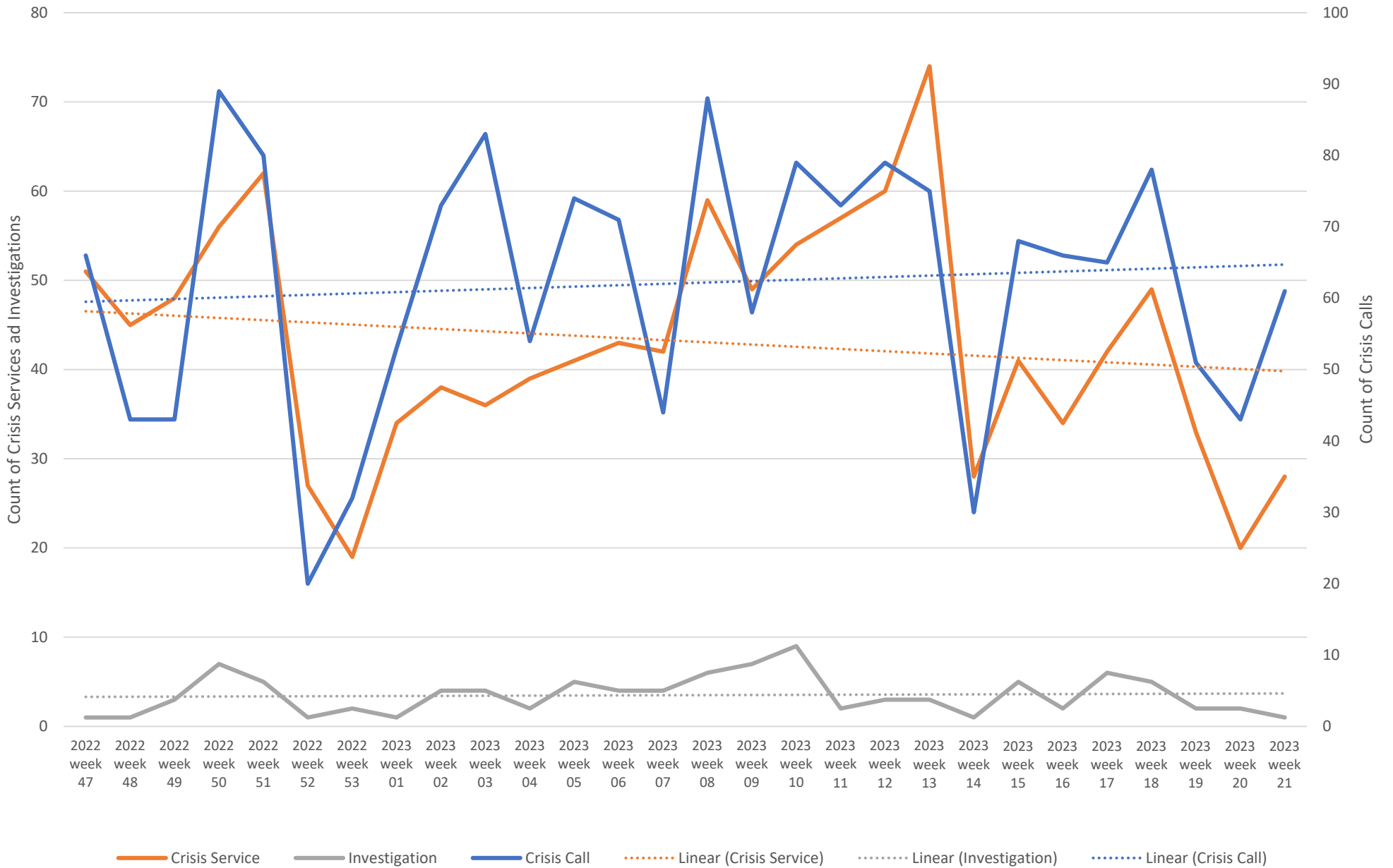
Page 2	Crisis Data - dates 11/13/22 to 05/27/23
Page 3	Crisis Data: Ages 0-17 - dates 11/13/22 to 05/27/23
Page 4	All DCR Dispatches - dates 11/13/22 to 05/27/23
Page 5	Weekly Staff Count - Staff providing Crisis or Investigation services 11/13/22 to 05/27/23
Page 6	Hospital placement locations (Invol and Vol) - No adjustment has been made for timely data - recent weeks likely low
Page 7	Telehealth only, crisis and investigation services from 11/13/22 to 05/27/23
Page 8	Crisis Service Unit Percent - Crisis Service units divided by Crisis units + Investigation units
Page 9	Washington State Indicators of Anxiety or Depression Based on Reported Frequency of Symptoms During Last 7 Days
Page 10	Place of Service -Crisis Services, percent of total by week
Page 11	Place of Service -Investigations, percent of total by week
Page 12	New COVID-19 Cases Reported Weekly per 100,000 population - 07/13/22 to 05/31/23
Page 13	New COVID-19 Deaths Reported Weekly per 1,000,000 population - 07/13/22 to 05/31/23
Page 14	Total Hospitalized Adults - COVID-19 (confirmed or suspected) 7 day average
Page 15	North Sound BH ASO Walkaway Chart 11/13/22 to 05/27/23

Crisis Data - dates 11/13/22 to 05/27/23

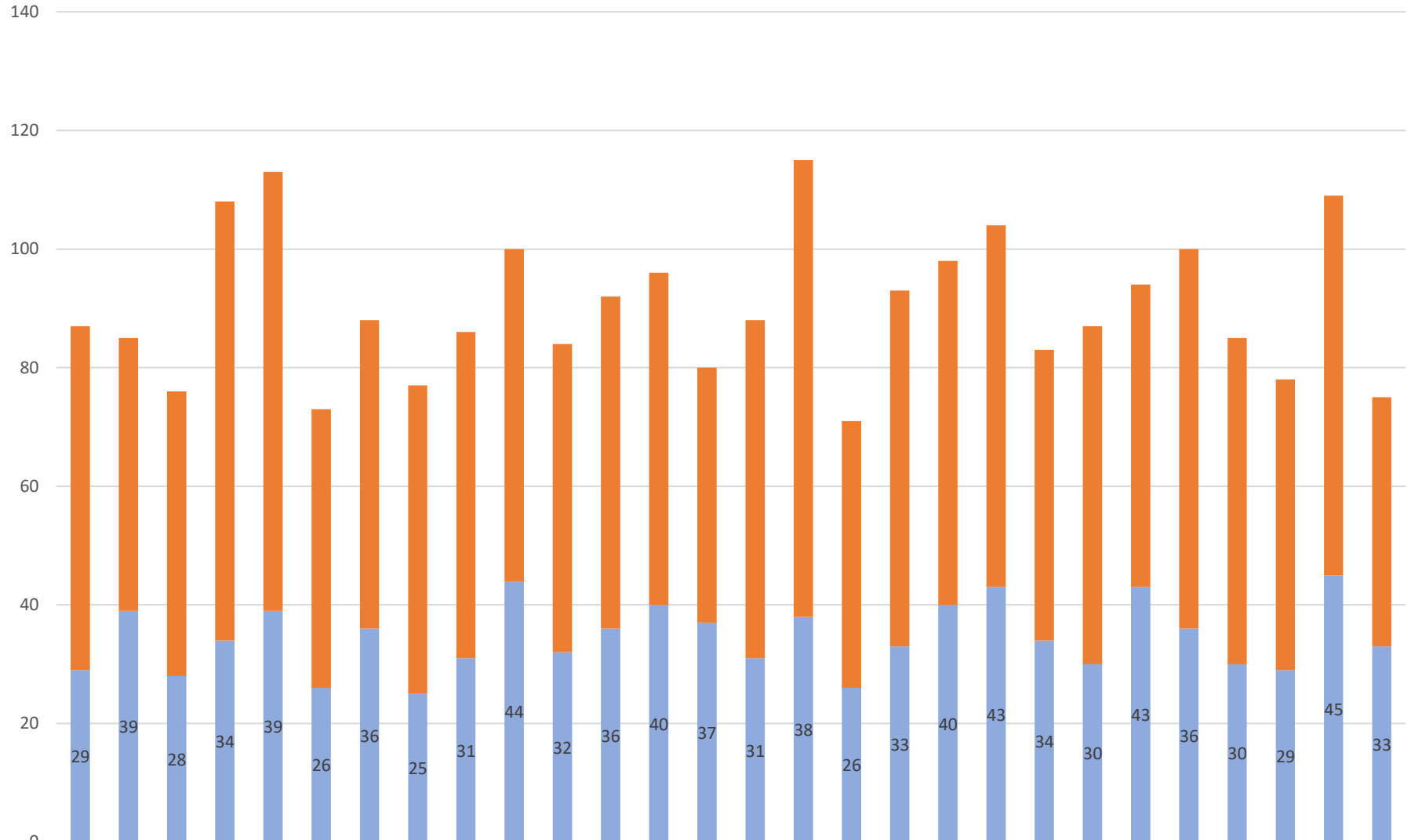


Latest Batch Dates
 Compass Health - 05/30/23
 Snohomish County ICRS - 05/29/23
 VOA Crisis Line - 05/31/23

Crisis Data: Ages 0-17 - dates 11/13/22 to 05/27/23

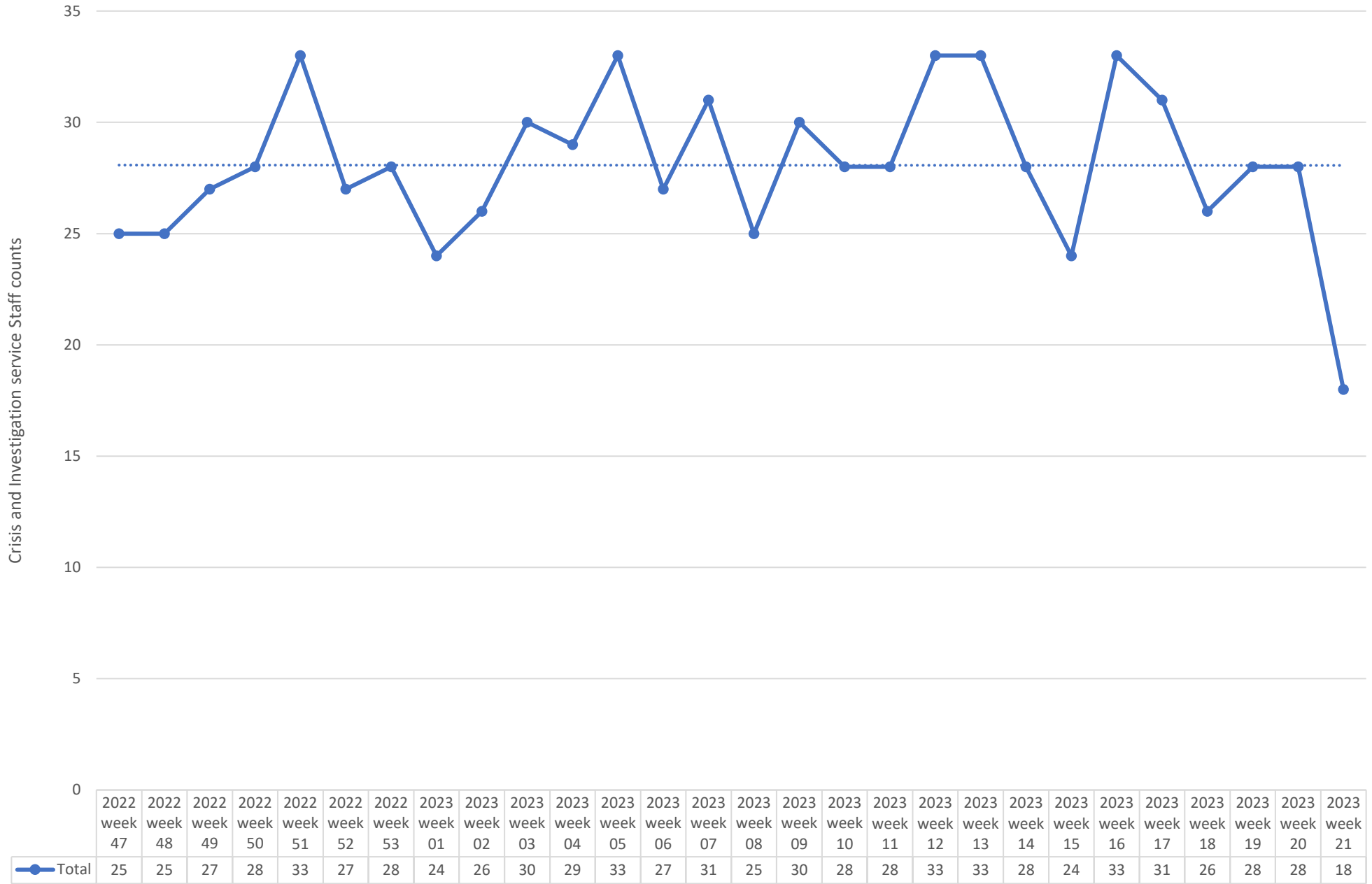


All DCR Dispatches - dates 11/13/22 to 05/27/23



dispatch resulting in other outcome	58	46	48	74	74	47	52	52	55	56	52	56	56	43	57	77	45	60	58	61	49	57	51	64	55	49	64	42
dispatch resulting in detention	29	39	28	34	39	26	36	25	31	44	32	36	40	37	31	38	26	33	40	43	34	30	43	36	30	29	45	33

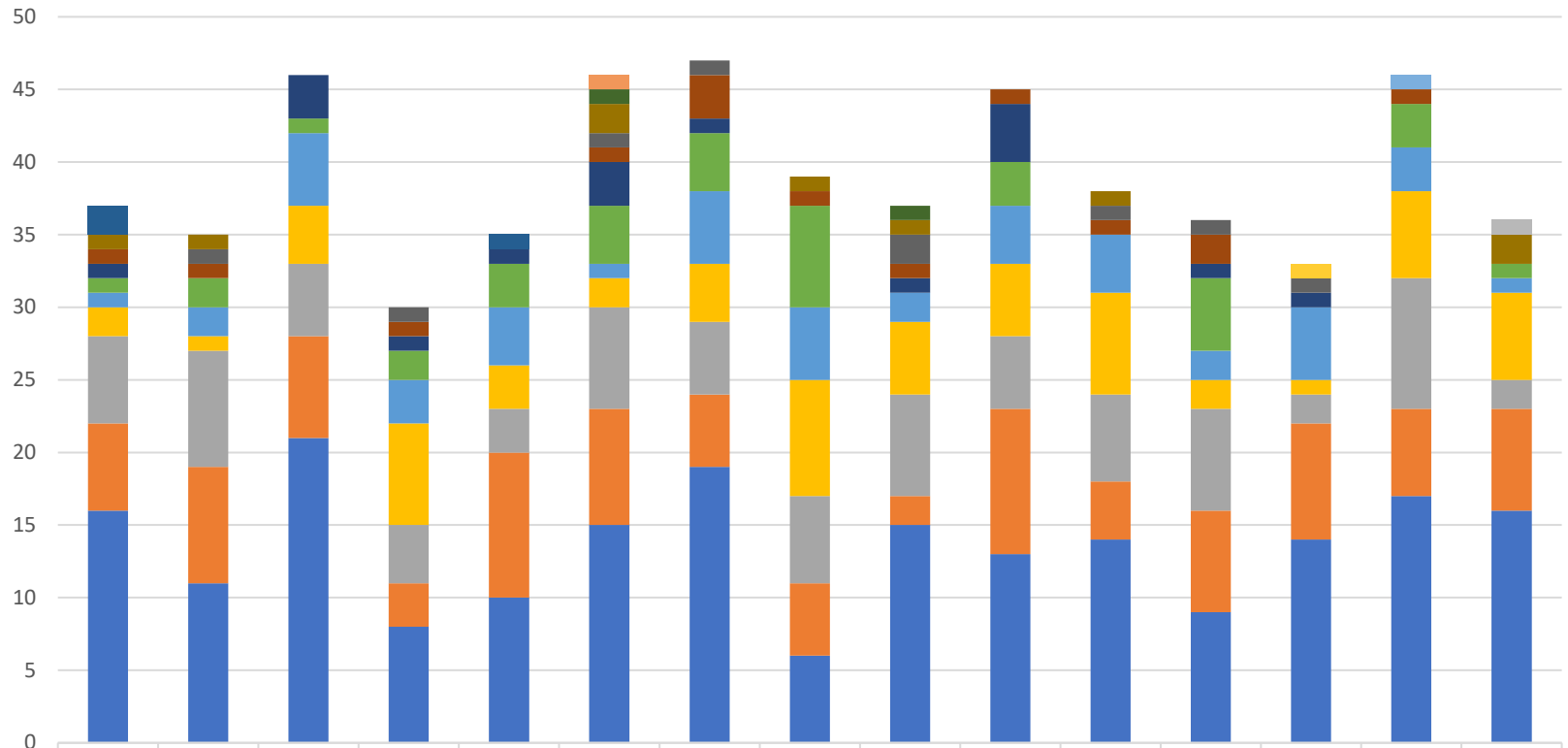
Weekly Staff Count - Staff providing Crisis or Investigation services 11/13/22 to 05/27/23



2023 week 21 ending 01/00/00

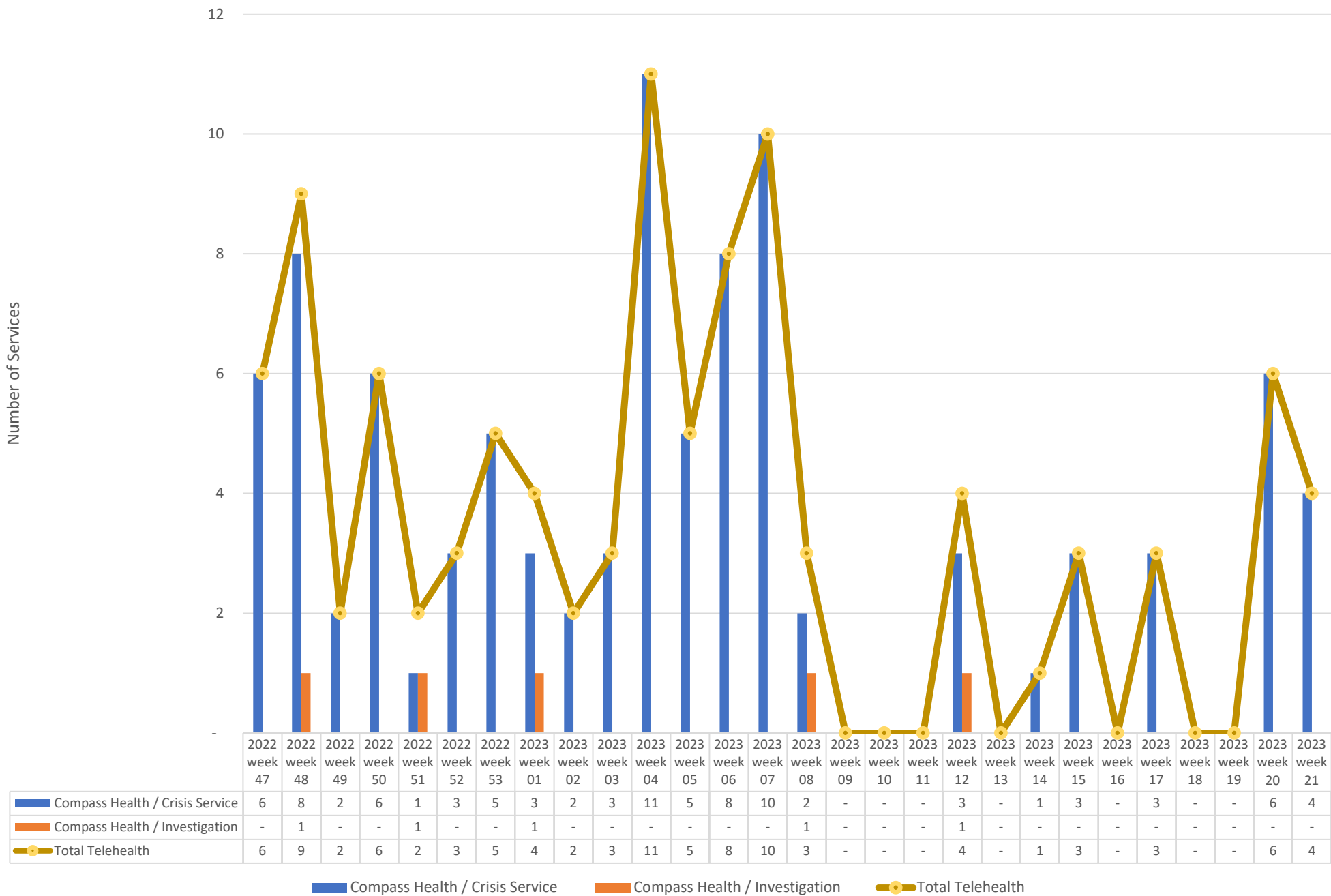
Hospital placement locations (Invol and Vol) - No adjustment has been made for timely data - recent weeks likely low

Count of hospital placement locations in the dispatch record

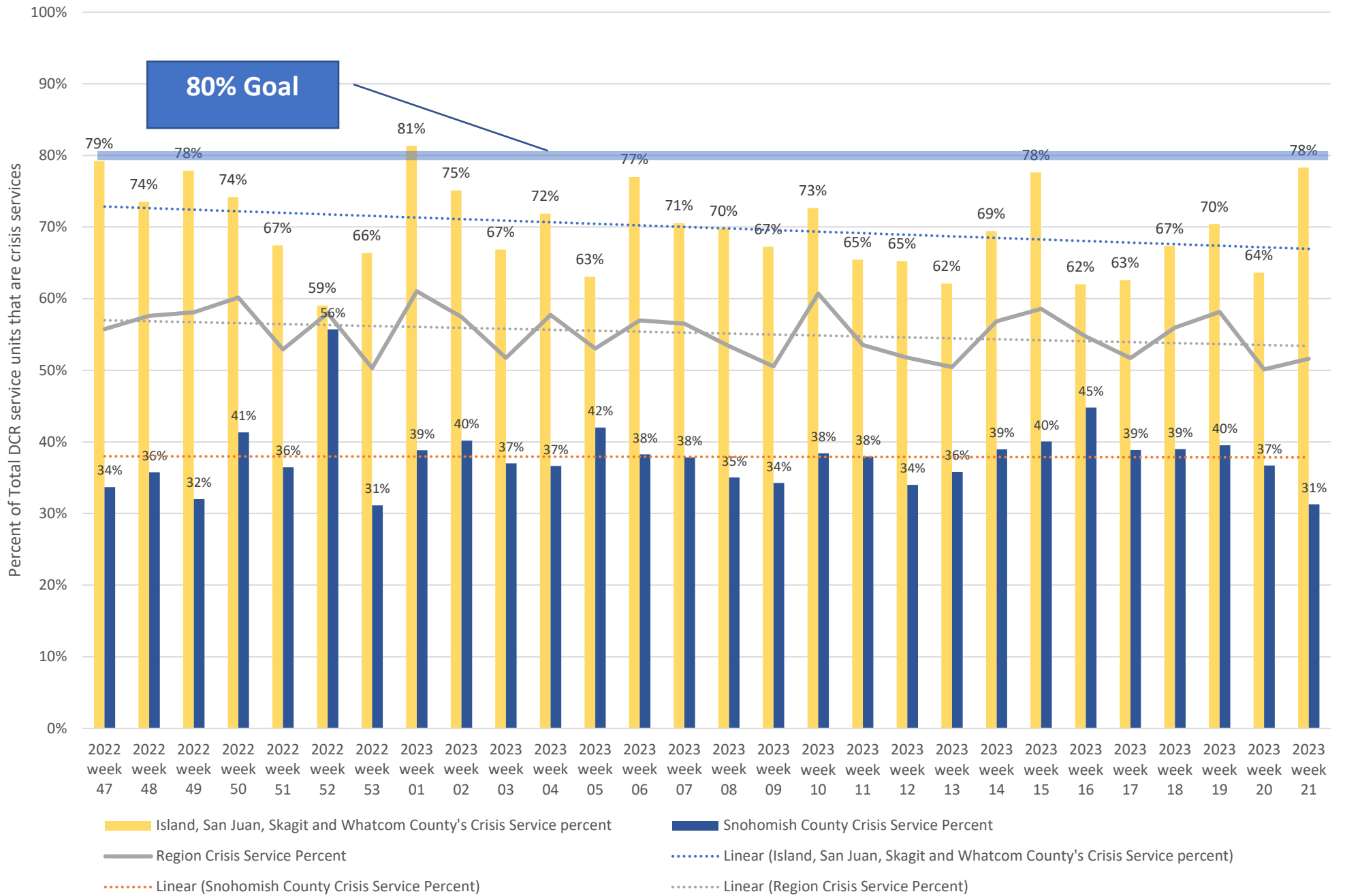


	2023 week 07	2023 week 08	2023 week 09	2023 week 10	2023 week 11	2023 week 12	2023 week 13	2023 week 14	2023 week 15	2023 week 16	2023 week 17	2023 week 18	2023 week 19	2023 week 20	2023 week 21
Swedish Mill Creek														1	
Lourdes Counseling Center													1		
Multicare Behavioral Health Inpatient Services - Auburn															1
SWEDISH MEDICAL CENTER CHERRY HILL						1									
Telecare Mental Health Serv Of WA					1										
Valley Cities Counseling And Consultation						1			1						
Cascade Behavioral Hospital LLC	2														
ABHS Chehalis	1	1				2		1	1		1				2
VALLEY GENERAL HOSPITAL		1		1		1	1		2		1	1	1		
Telecare North Sound Evaluation and Treatment	1	1		1		1	3	1	1	1	1	2		1	
Mukilteo	1		3	1	1	3	1		1	4		1	1		
BHC Fairfax Hospital INC	1	2	1	2	3	4	4	7		3		5		3	1
SMOKEY POINT BEHAVIORAL HOSPITAL	1	2	5	3	4	1	5	5	2	4	4	2	5	3	1
Skagit Valley Hospital	2	1	4	7	3	2	4	8	5	5	7	2	1	6	6
SWEDISH EDMONDS	6	8	5	4	3	7	5	6	7	5	6	7	2	9	2
Peacehealth Bellingham	6	8	7	3	10	8	5	5	2	10	4	7	8	6	7
Providence Everett	16	11	21	8	10	15	19	6	15	13	14	9	14	17	16

Telehealth only, crisis and investigation services from 11/13/22 to 05/27/23



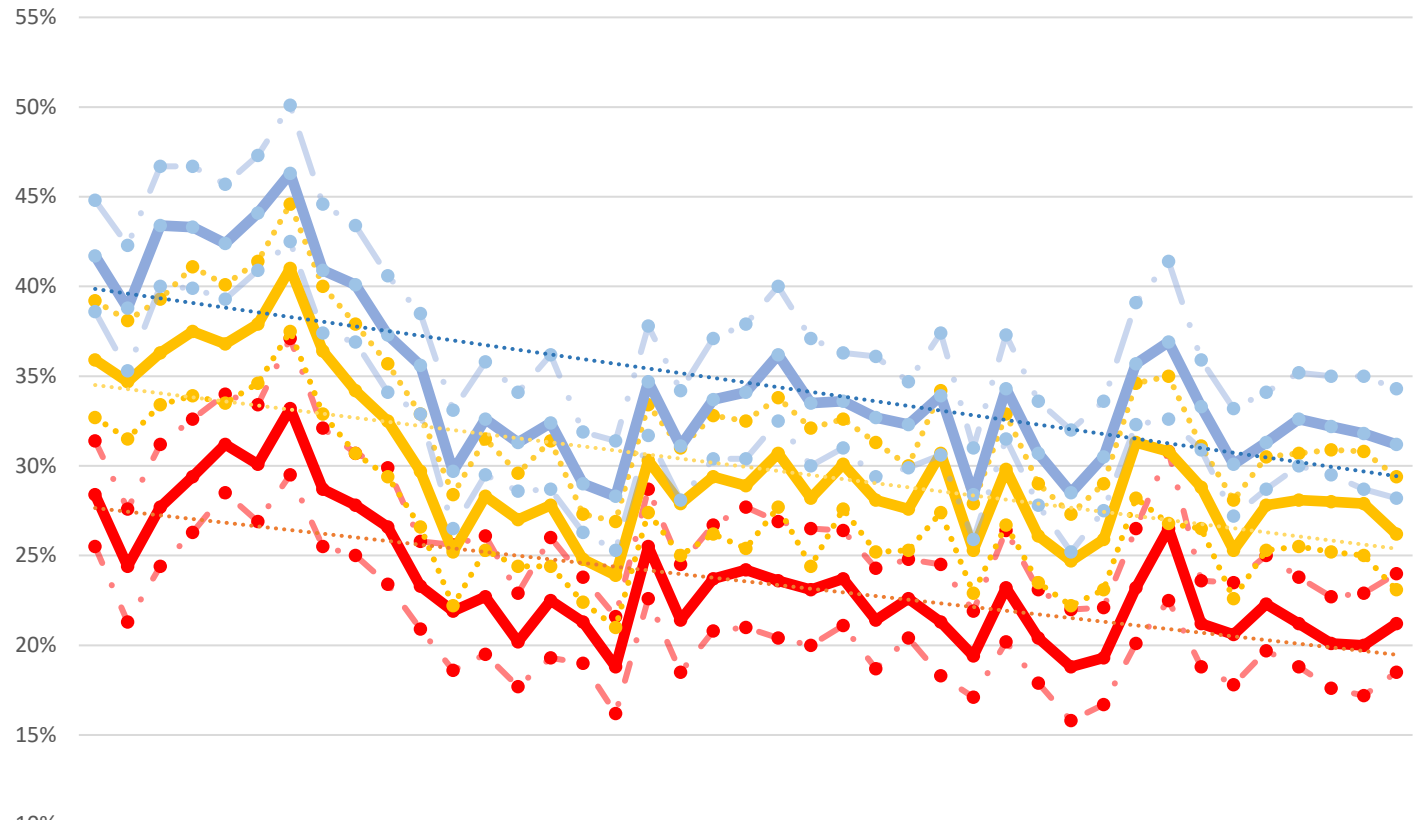
Crisis Service Unit Percent - Crisis Service units divided by Crisis units + Investigation units



Washington State Indicators of Anxiety or Depression Based on Reported Frequency of Symptoms During Last 7 Days

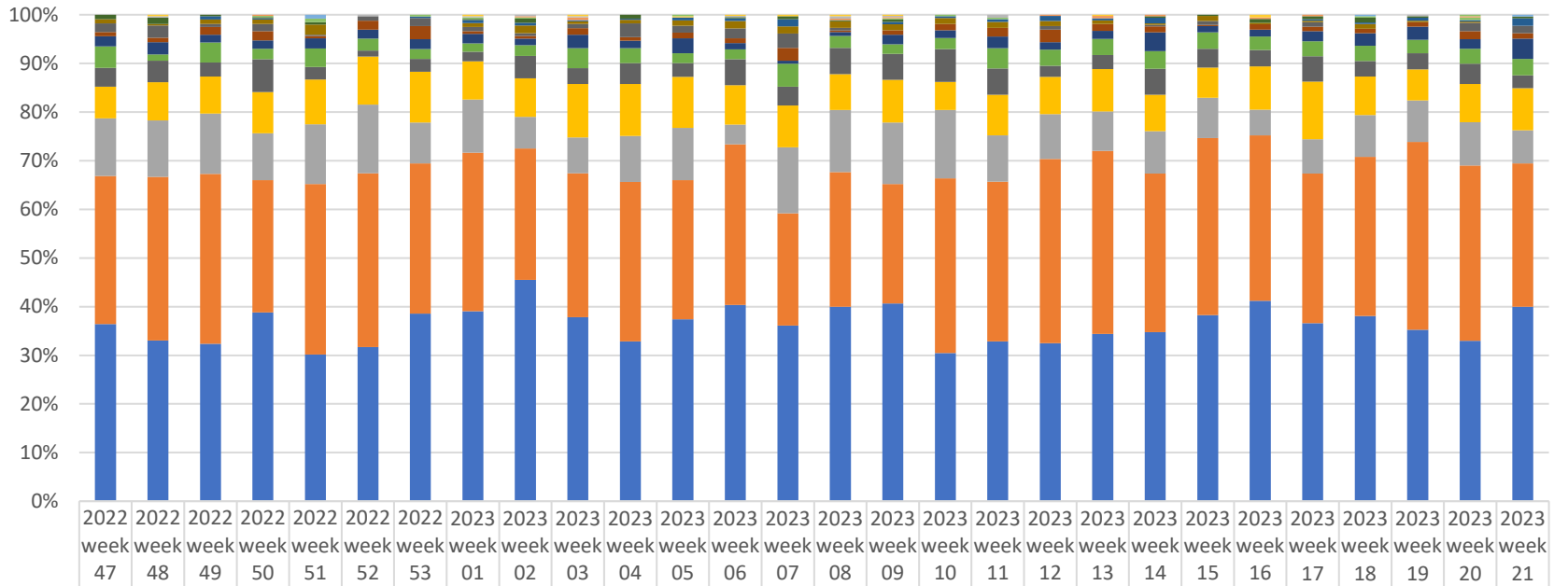
The U.S. Census Bureau, in collaboration with five federal agencies, launched the Household Pulse Survey to produce data on the social and economic impacts of Covid-19 on American households. The Household Pulse Survey was designed to gauge the impact of the pandemic on employment status, consumer spending, food security, housing, education disruptions, and dimensions of physical and mental wellness.

<https://data.cdc.gov/NCHS/Indicators-of-Anxiety-or-Depression-Based-on-Reported-Frequency-of-Symptoms-During-Last-7-Days>



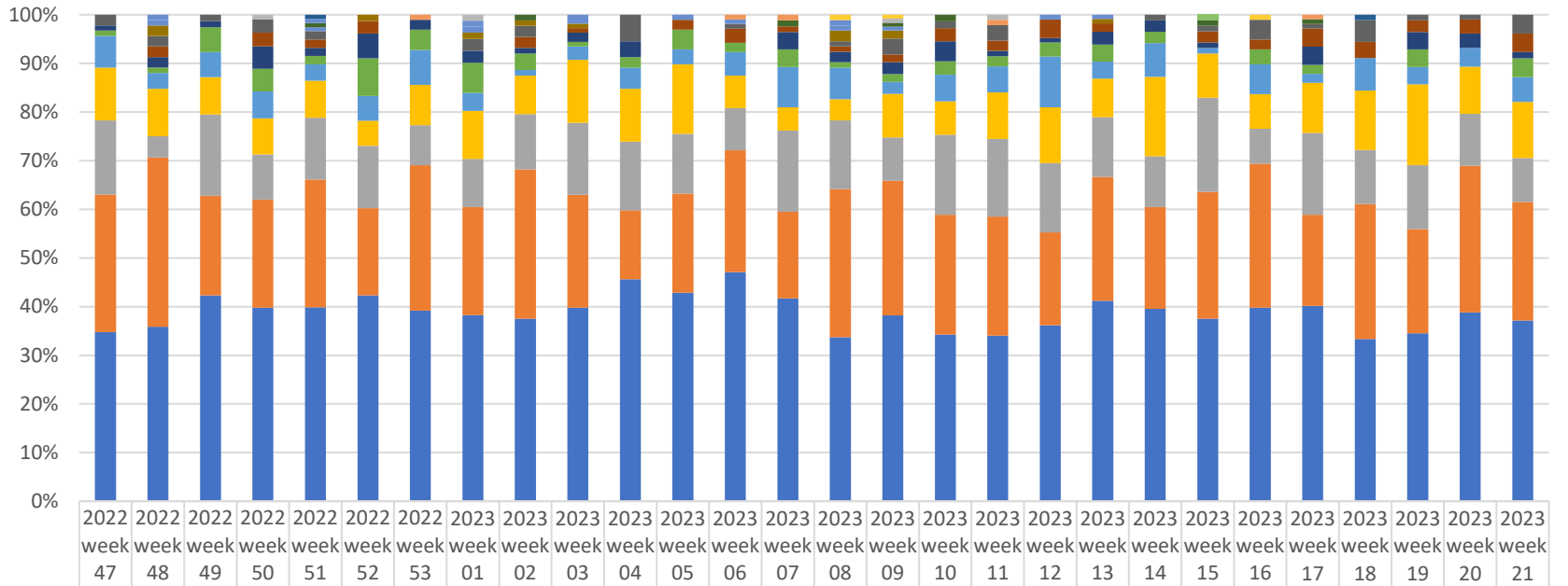
Date	% with Symptoms of Depressive Disorder low conf. level	% with Symptoms of Depressive Disorder value	% with Symptoms of Depressive Disorder high conf. level	% with Symptoms of Anxiety Disorder low conf. level	% with Symptoms of Anxiety Disorder value	% with Symptoms of Anxiety Disorder high conf. level	% with Symptoms of Anxiety or Depressive Disorder low conf. level	% with Symptoms of Anxiety or Depressive Disorder value	% with Symptoms of Anxiety or Depressive Disorder high conf. level
14 Oct '20	26%	28%	31%	33%	36%	39%	39%	42%	45%
28 Oct '20	21%	24%	28%	32%	35%	38%	35%	39%	42%
11 Nov '20	24%	28%	31%	33%	36%	39%	40%	43%	47%
25 Nov '20	26%	29%	31%	34%	37%	40%	40%	43%	47%
09 Dec '20	29%	31%	34%	35%	38%	41%	41%	44%	47%
06 Jan '21	27%	30%	33%	37%	41%	45%	43%	46%	50%
20 Jan '21	30%	33%	36%	38%	43%	48%	46%	49%	53%
03 Feb '21	26%	29%	32%	33%	36%	39%	37%	40%	43%
17 Feb '21	25%	28%	31%	30%	33%	36%	34%	37%	40%
03 Mar '21	23%	26%	29%	27%	30%	33%	31%	34%	37%
17 Mar '21	21%	24%	27%	25%	28%	31%	29%	32%	35%
14 Apr '21	19%	22%	25%	23%	26%	29%	27%	30%	33%
28 Apr '21	20%	23%	26%	24%	27%	30%	28%	31%	34%
12 May '21	18%	21%	24%	22%	25%	28%	26%	29%	32%
26 May '21	19%	22%	25%	23%	26%	29%	27%	30%	33%
09 Jun '21	19%	22%	25%	23%	26%	29%	27%	30%	33%
23 Jun '21	16%	19%	22%	20%	23%	26%	24%	27%	30%
21 Jul '21	23%	26%	29%	27%	30%	33%	31%	34%	37%
04 Aug '21	19%	22%	25%	23%	26%	29%	27%	30%	33%
18 Aug '21	21%	24%	27%	25%	28%	31%	29%	32%	35%
01 Sep '21	21%	24%	27%	25%	28%	31%	29%	32%	35%
15 Sep '21	20%	23%	26%	24%	27%	30%	28%	31%	34%
29 Sep '21	20%	23%	26%	24%	27%	30%	28%	31%	34%
01 Oct '21	21%	24%	27%	25%	28%	31%	29%	32%	35%
29 Oct '21	19%	22%	25%	23%	26%	29%	27%	30%	33%
01 Nov '21	21%	24%	27%	25%	28%	31%	29%	32%	35%
29 Nov '21	20%	23%	26%	24%	27%	30%	28%	31%	34%
26 Dec '21	18%	21%	24%	22%	25%	28%	26%	29%	32%
02 Jan '22	17%	20%	23%	21%	24%	27%	25%	28%	31%
30 Mar '22	17%	20%	23%	21%	24%	27%	25%	28%	31%
02 Apr '22	18%	21%	24%	22%	25%	28%	26%	29%	32%
27 Apr '22	20%	23%	26%	24%	27%	30%	28%	31%	34%
01 Jun '22	18%	21%	24%	22%	25%	28%	26%	29%	32%
29 Jun '22	16%	19%	22%	20%	23%	26%	24%	27%	30%
27 Jul '22	17%	20%	23%	21%	24%	27%	25%	28%	31%
14 Sep '22	20%	23%	26%	24%	27%	30%	28%	31%	34%
05 Oct '22	23%	26%	29%	27%	30%	33%	31%	34%	37%
02 Nov '22	19%	22%	25%	23%	26%	29%	27%	30%	33%
09 Dec '22	18%	21%	24%	22%	25%	28%	26%	29%	32%
04 Jan '23	20%	23%	26%	24%	27%	30%	28%	31%	34%
01 Feb '23	19%	22%	25%	23%	26%	29%	27%	30%	33%
01 Mar '23	18%	21%	24%	22%	25%	28%	26%	29%	32%
29 Mar '23	17%	20%	23%	21%	24%	27%	25%	28%	31%
26 Apr '23	19%	22%	25%	23%	26%	29%	27%	30%	33%

Place of Service -Crisis Services, percent of total by week



	2022 week 47	2022 week 48	2022 week 49	2022 week 50	2022 week 51	2022 week 52	2022 week 53	2023 week 01	2023 week 02	2023 week 03	2023 week 04	2023 week 05	2023 week 06	2023 week 07	2023 week 08	2023 week 09	2023 week 10	2023 week 11	2023 week 12	2023 week 13	2023 week 14	2023 week 15	2023 week 16	2023 week 17	2023 week 18	2023 week 19	2023 week 20	2023 week 21	
Custodial Care Facility												1																1	
Skilled Nursing Facility					3																					1		1	
Community Mental Health Center		1						1		1	1	1	1	1	1	1				1			2						
Psych. Residential		1				1		1	1	1		1			2	1		2									1		
On Campus Outpatient Hospital				1					1	2					1	1			1	2	1		1	1				1	
Nursing Facility				1	3		1	1	1							1	1	1								1		2	
Group Home	3	4	1	1	2			1	3		3		1	2	1	2						1	1	3	2	3	1	1	
Homeless Shelter			2	1			1	2	2	1	1	2	2	5		2	1	2	4	2	4				1	1	2	1	4
School	3	1	3	4	8			3	6	2	3	4	6	5	5	5	4	4	4	3	1	4	1	1	3	1	1		
Telehealth	6	8	2	6	1	3	5	3	2	3	11	5	8	10	2				3		1	3		3			6	4	
Inpatient Hospital	3	3	5	8	2	6	8	2	2	5	3	4	4	9	1	4	4	6	10	6	4	1	4	3	3	3	3	6	3
Inpatient Psychiatric Facility	7	8	5	7	8	6	6	7	5	10	6	11	5	2	3	8	5	8	6	7	13	5	5	7	8	9	7	11	
Prison Correctional Facility	15	4	13	9	15	8	6	6	8	15	12	7	8	16	9	8	7	14	13	14	12	13	10	10	10	9	11	9	
Assisted Living Facility	13	14	9	28	10	4	8	7	17	12	17	10	21	13	20	22	21	18	9	12	18	15	12	17	10	11	15	7	
Emergency Room Hospital	22	25	24	35	36	32	31	28	29	40	42	37	32	29	27	36	18	28	30	37	25	24	32	39	25	21	28	23	
Home	40	37	39	40	48	46	25	39	24	27	37	38	16	46	47	52	44	32	36	34	29	32	19	23	27	28	32	18	
Other Place of Service	103	107	110	113	137	116	92	116	99	108	129	101	130	78	102	101	112	110	148	159	109	141	122	101	103	127	129	78	
Office	123	105	102	161	118	103	115	139	167	138	129	132	159	122	147	167	95	110	127	145	116	148	148	120	120	116	118	106	

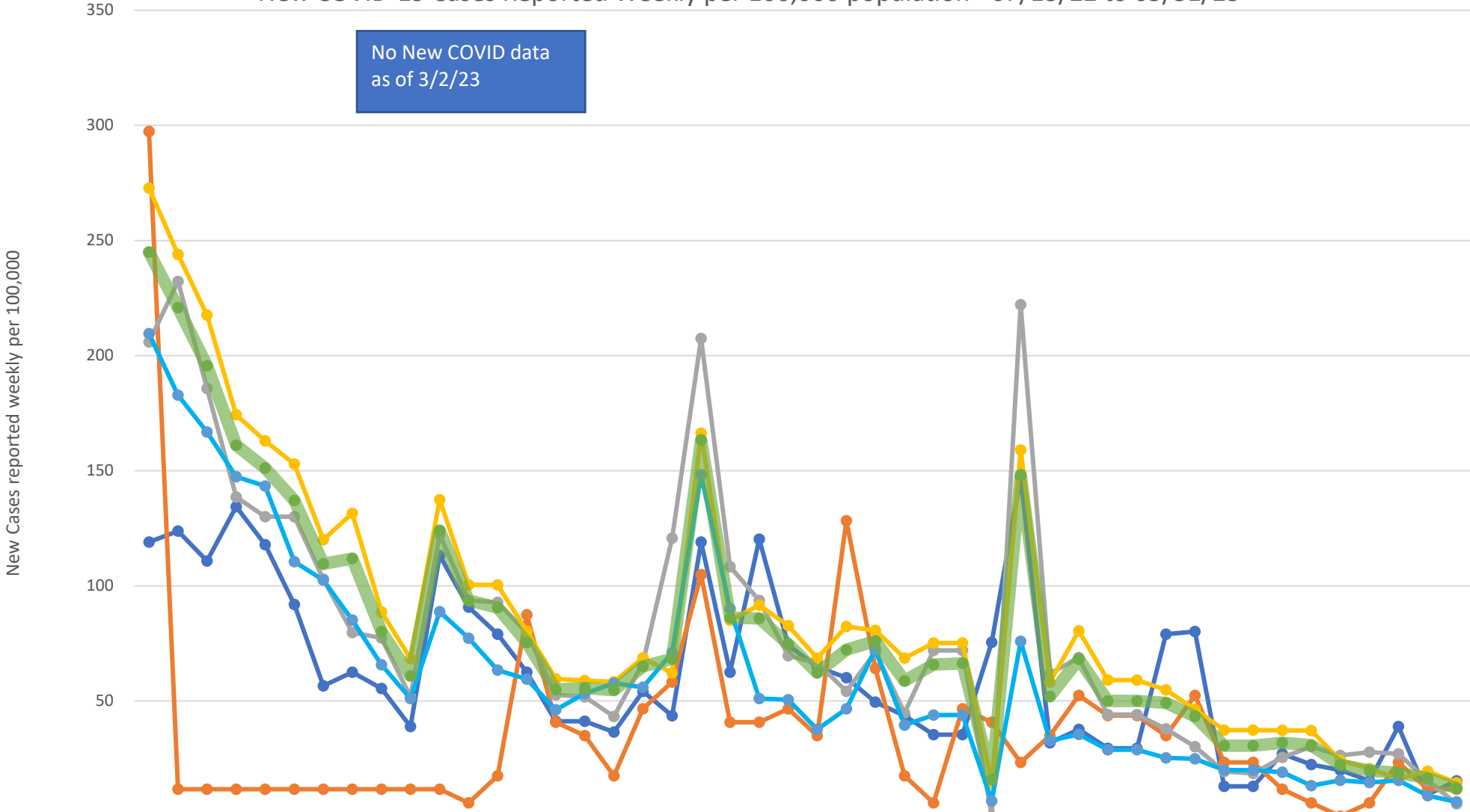
Place of Service -Investigations, percent of total by week



	2022 week 47	2022 week 48	2022 week 49	2022 week 50	2022 week 51	2022 week 52	2022 week 53	2023 week 01	2023 week 02	2023 week 03	2023 week 04	2023 week 05	2023 week 06	2023 week 07	2023 week 08	2023 week 09	2023 week 10	2023 week 11	2023 week 12	2023 week 13	2023 week 14	2023 week 15	2023 week 16	2023 week 17	2023 week 18	2023 week 19	2023 week 20	2023 week 21
Residential SUD																						1						
Skilled Nursing Facility					1																					1		
On Campus Outpatient Hospital															1	1								1				
Nursing Facility				1				1								1		1										
Homeless Shelter							1						1	1				1							1			
Telehealth		1			1			1							1					1								
School					1				1					1		1	1						1		1			
Community Mental Health Center		1			1			1		2		1	1		1	1					1							
Psych. Residential		2				1		1	1	1						2	2				1							
Group Home	2	2	1	3	2			2	2		5		1		1	4	1	3			1	1	4	1	4	1	1	3
Assisted Living Facility		2		3	2	2			2	1		2	3	1	1	2	2	2	4	2		2	2	4	3	2	3	3
Home	1	2	1	5	2	4	2	2	1	2	3			3	2	3	3	1	1	3	2	1		4		3	3	1
Office	1	1	4	5	2	6	4	5	3	1	2	4	2	3	1	2	2	2	3	4	2		3	2		3		3
Inpatient Hospital	6	3	4	6	4	4	7	3	1	3	4	3	5	7	6	3	4	5	11	4	6	1	6	2	6	3	4	4
Inpatient Psychiatric Facility	10	9	6	8	9	4	8	8	7	14	10	14	7	4	4	11	5	9	12	9	14	8	7	11	11	14	10	9
Prison Correctional Facility	14	4	13	10	15	10	8	8	10	16	13	12	9	14	13	11	12	15	15	14	9	17	7	18	10	11	11	7
Other Place of Service	26	32	16	24	31	14	29	18	27	25	13	20	26	15	28	34	18	23	20	29	18	23	29	20	25	18	31	19
Emergency Room Hospital	32	33	33	43	47	33	38	31	33	43	42	42	49	35	31	47	25	32	38	47	34	33	39	43	30	29	40	29

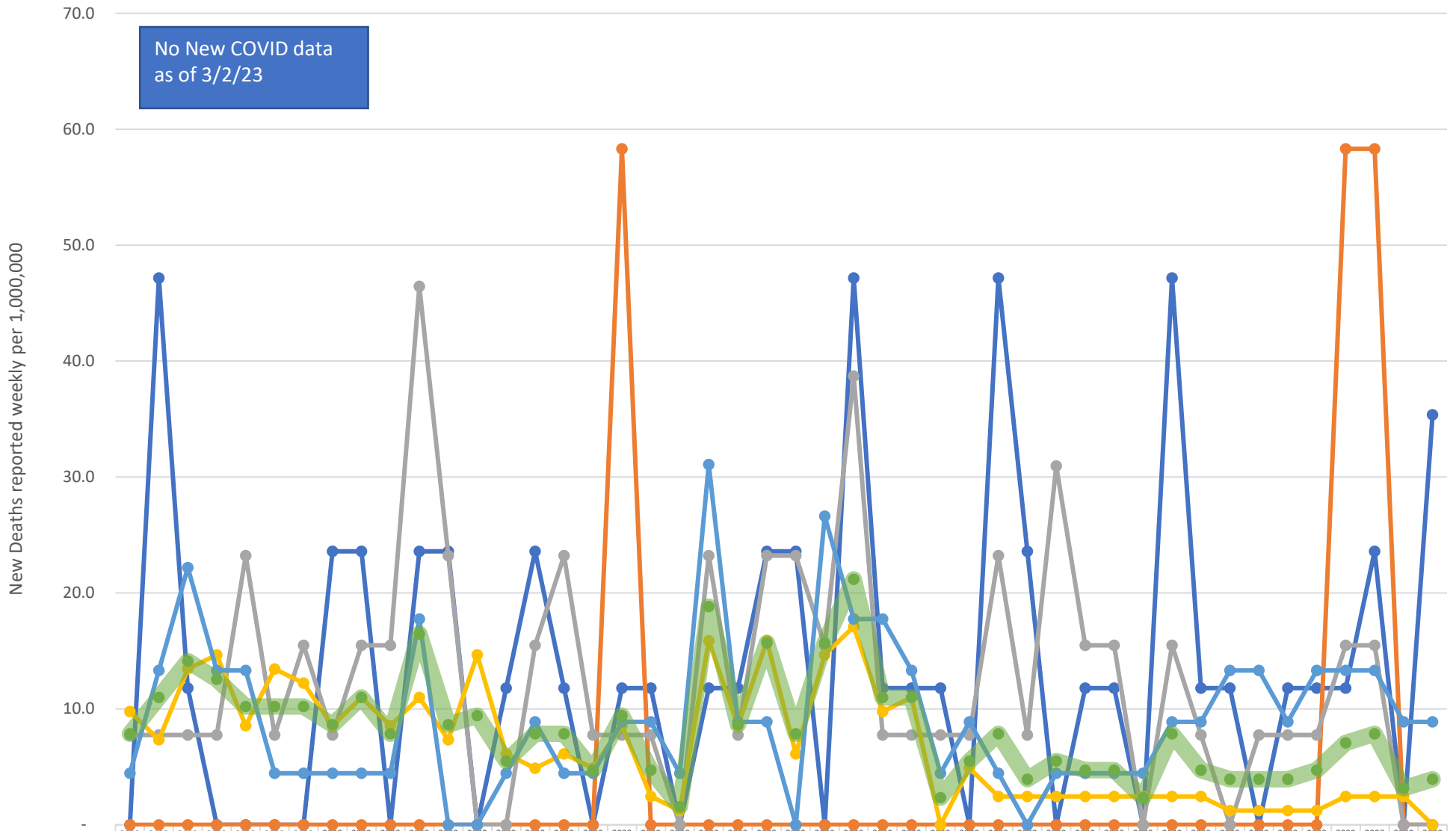
New COVID-19 Cases Reported Weekly per 100,000 population - 07/13/22 to 05/31/23

No New COVID data as of 3/2/23



	2022 Week 28	2022 Week 29	2022 Week 30	2022 Week 31	2022 Week 32	2022 Week 33	2022 Week 34	2022 Week 35	2022 Week 36	2022 Week 37	2022 Week 38	2022 Week 39	2022 Week 40	2022 Week 41	2022 Week 42	2022 Week 43	2022 Week 44	2022 Week 45	2022 Week 46	2022 Week 48	2022 Week 49	2022 Week 50	2022 Week 51	2022 Week 52	2023 Week 01	2023 Week 02	2023 Week 03	2023 Week 04	2023 Week 05	2023 Week 06	2023 Week 07	2023 Week 08	2023 Week 09	2023 Week 10	2023 Week 11	2023 Week 12	2023 Week 13	2023 Week 14	2023 Week 15	2023 Week 16	2023 Week 17	2023 Week 18	2023 Week 19	2023 Week 20	2023 Week 21	2023 Week 22
Island	119	124	111	134	118	92	57	62	55	39	113	91	79	62	41	41	37	54	44	119	62	120	74	65	60	50	44	35	35	75	147	32	38	29	29	79	80	13	13	27	22	20	15	39	9	15
San Juan	297	12	12	12	12	12	12	12	12	12	6	17	87	41	35	17	47	58	44	105	41	41	47	35	128	64	17	6	47	41	23	35	52	44	44	35	52	23	23	12	6	-	6	23	12	12
Skagit	206	232	186	139	130	130	103	80	77	52	122	94	93	80	53	52	43	67	121	207	108	94	70	67	54	71	45	72	72	-	222	62	69	44	44	38	30	19	19	26	30	26	28	27	15	5
Snohomish	273	244	218	174	163	153	120	132	89	68	137	100	100	80	60	59	58	69	62	166	85	92	83	69	82	81	69	75	75	14	159	58	80	59	59	55	46	37	37	37	37	24	21	16	20	15
Whatcom	209	183	167	147	143	111	103	85	66	51	89	77	63	59	46	53	58	56	71	148	90	51	51	38	47	72	40	44	44	7	76	33	36	29	29	25	25	20	20	19	13	16	15	16	9	6
Region	245	221	196	161	151	137	110	112	80	61	124	94	91	75	55	56	55	65	68	163	86	86	75	62	72	76	59	66	66	16	148	52	68	50	50	49	43	31	31	32	31	22	20	19	16	12

New COVID-19 Deaths Reported Weekly per 1,000,000 population - 07/13/22 to 05/31/23

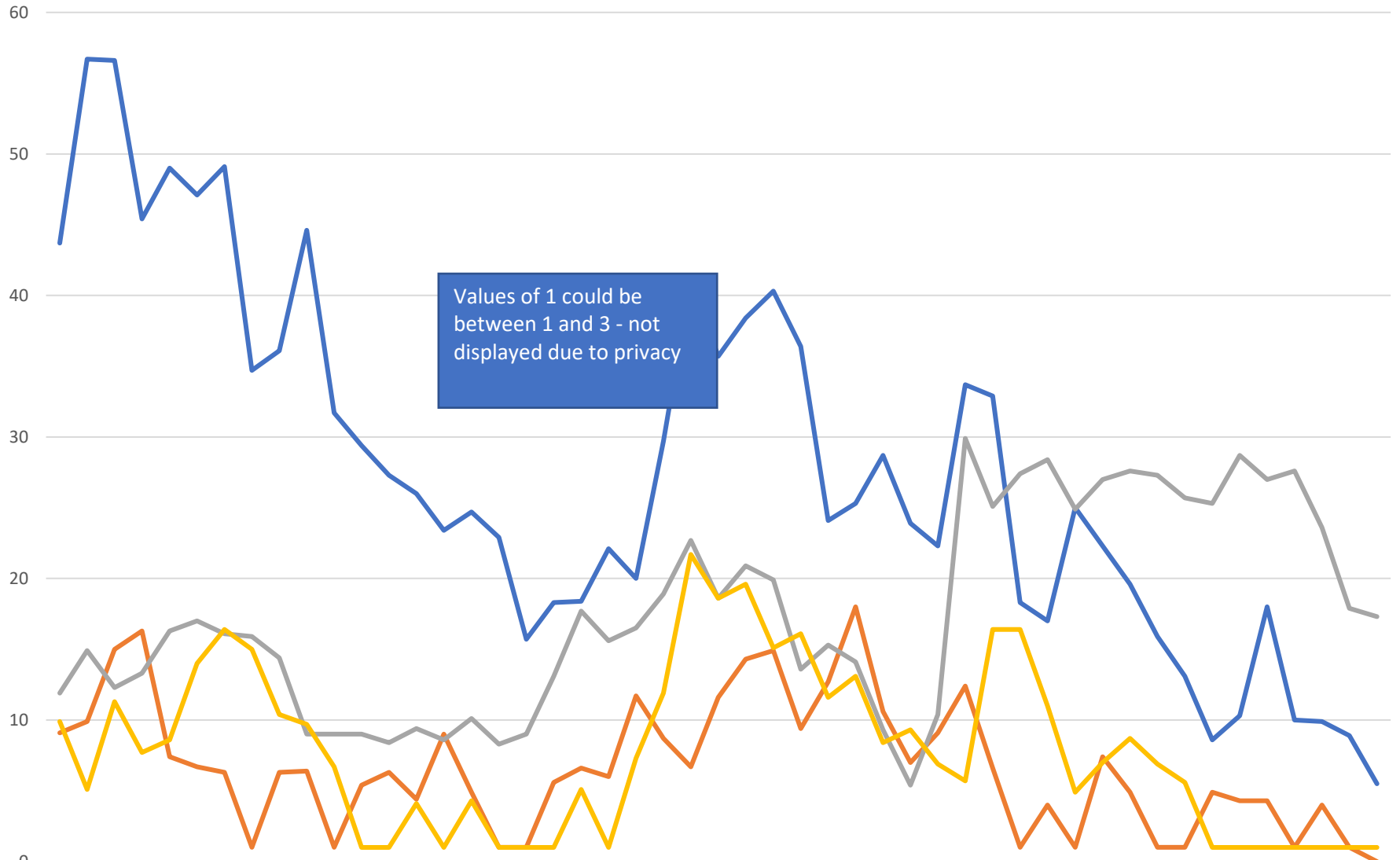


No New COVID data as of 3/2/23

	2022 Week 28	2022 Week 29	2022 Week 30	2022 Week 31	2022 Week 32	2022 Week 33	2022 Week 34	2022 Week 35	2022 Week 36	2022 Week 37	2022 Week 38	2022 Week 39	2022 Week 40	2022 Week 41	2022 Week 42	2022 Week 43	2022 Week 44	2022 Week 45	2022 Week 46	2022 Week 48	2022 Week 49	2022 Week 50	2022 Week 51	2022 Week 52	2023 Week 01	2023 Week 02	2023 Week 03	2023 Week 04	2023 Week 05	2023 Week 06	2023 Week 07	2023 Week 08	2023 Week 09	2023 Week 10	2023 Week 11	2023 Week 12	2023 Week 13	2023 Week 14	2023 Week 15	2023 Week 16	2023 Week 17	2023 Week 18	2023 Week 19	2023 Week 20	2023 Week 21	2023 Week 22	
Island	-	47.2	11.8	-	-	-	-	23.6	23.6	-	23.6	23.6	-	11.8	23.6	11.8	-	11.8	11.8	-	11.8	11.8	23.6	23.6	-	47.2	11.8	11.8	11.8	11.8	-	47.2	23.6	-	11.8	11.8	-	47.2	11.8	11.8	-	11.8	11.8	-	35.4		
San Juan	-	-	-	-	-	-	-	-	-	-	-	-	-	-	-	-	-	58.3	-	-	-	-	-	-	-	-	-	-	-	-	-	-	-	-	-	-	-	-	-	-	-	-	58.3	58.3	-	-	
Skagit	7.7	7.7	7.7	7.7	23.2	7.7	15.5	7.7	15.5	15.5	46.4	23.2	-	-	15.5	23.2	7.7	7.7	7.7	-	23.2	7.7	23.2	23.2	15.5	38.7	7.7	7.7	7.7	7.7	23.2	7.7	31.0	15.5	15.5	-	15.5	7.7	-	7.7	7.7	7.7	15.5	15.5	-	-	
Snohomish	9.8	7.3	13.4	14.7	8.6	13.4	12.2	8.6	11.0	8.6	11.0	7.3	14.7	6.1	4.9	6.1	4.9	8.6	2.4	1.2	15.9	8.6	15.9	6.1	14.7	17.1	9.8	11.0	-	4.9	2.4	2.4	2.4	2.4	2.4	2.4	2.4	2.4	1.2	1.2	1.2	1.2	2.4	2.4	2.4	2.4	-
Whatcom	4.4	13.3	22.2	13.3	13.3	4.4	4.4	4.4	4.4	4.4	17.8	-	-	4.4	8.9	4.4	4.4	8.9	4.4	4.4	31.1	8.9	8.9	-	26.6	17.8	17.8	13.3	4.4	8.9	4.4	-	4.4	4.4	4.4	4.4	4.4	8.9	8.9	13.3	13.3	8.9	13.3	13.3	13.3	8.9	8.9
Region	7.8	11.0	14.1	12.5	10.2	10.2	10.2	8.6	11.0	7.8	16.5	8.6	9.4	5.5	7.8	7.8	4.7	9.4	4.7	1.6	18.8	8.6	15.7	7.8	15.7	21.2	11.0	11.0	2.4	5.5	7.8	3.9	5.5	4.7	4.7	2.4	7.8	4.7	3.9	3.9	3.9	3.9	4.7	7.1	7.8	3.1	3.9

Island San Juan Skagit Snohomish Whatcom Region

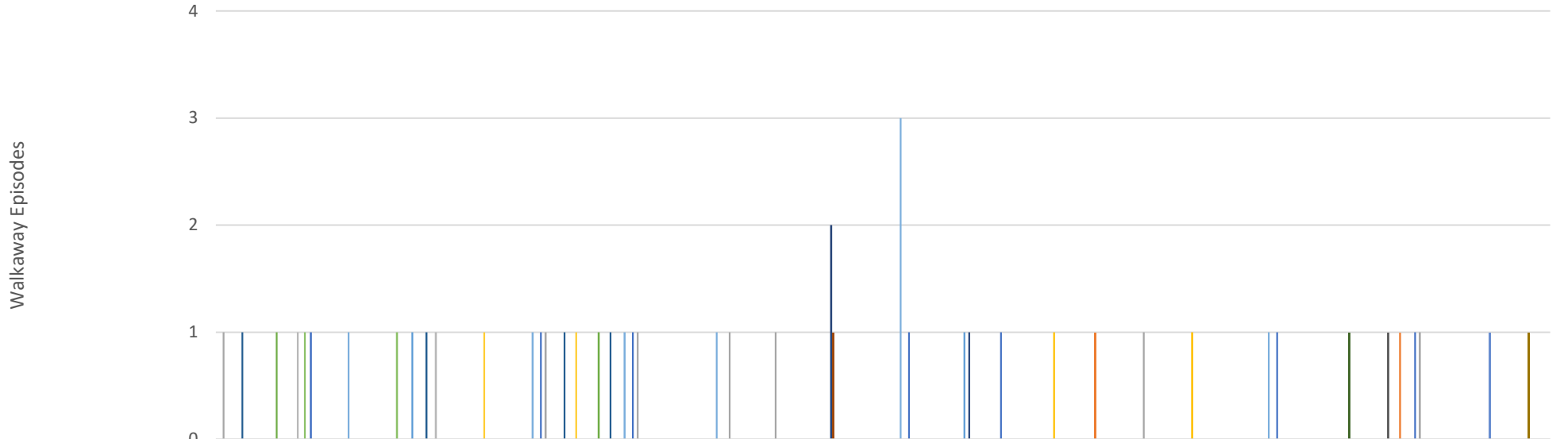
Total Hospitalized Adults - COVID-19 (confirmed or suspected) 7 day average



Values of 1 could be between 1 and 3 - not displayed due to privacy

	6/2 4/2 022	7/1 202	7/8 202	7/1 5/2 022	7/2 2/2 022	7/2 9/2 022	8/5/ 202	8/1 2/2 022	8/1 9/2 022	8/2 6/2 022	9/2 202	9/9/ 202	9/1 6/2 022	9/2 3/2 022	9/3 0/2 022	10/ 7/2 022	10/ 202	10/ 202	10/ 202	11/ 4/2 022	11/ 202	11/ 202	11/ 202	11/ 202	12/ 2/2 022	12/ 9/2 022	12/ 202	12/ 202	12/ 202	1/6/ 202	1/1 3/2 023	1/2 0/2 023	1/2 7/2 023	2/3/ 202	2/1 0/2 023	2/1 7/2 023	2/2 4/2 023	3/3/ 202	3/1 0/2 023	3/1 7/2 023	3/2 4/2 023	3/3 1/2 023	4/7/ 202	4/1 202	4/2 1/2 023	4/2 8/2 023	5/5/ 202	5/1 2/2 023	5/1 9/2 023	5/2 6/2 023
Prov. Everett	43.7	56.7	56.6	45.4	49	47.1	49.1	34.7	36.1	44.6	31.7	29.4	27.3	26	23.4	24.7	22.9	15.7	18.3	18.4	22.1	20	29.7	41	35.7	38.4	40.3	36.4	24.1	25.3	28.7	23.9	22.3	33.3	33.7	32.9	18.3	17	25	22.3	19.6	15.9	13.1	8.6	10.3	18	10	9.9	8.9	5.5
SVH	9.1	9.9	15	16.3	7.4	6.7	6.3	1	6.3	6.4	1	5.4	6.3	4.4	9	4.9	1	1	5.6	6.6	6	11.7	8.7	6.7	11.6	14.3	14.9	9.4	12.7	18	10.6	7	9.1	12.4	6.6	1	4	1	7.4	4.9	1	1	4.9	4.3	4.3	1	4	1	0	
ST Joe	11.9	14.9	12.3	13.3	16.3	17	16.1	15.9	14.4	9	9	8.4	9.4	8.6	10.1	8.3	9	13.1	17.7	15.6	16.5	18.9	22.7	18.6	20.9	19.9	13.6	15.3	14.1	9.3	5.4	10.4	29.9	25.1	27.4	28.4	24.9	27	27.6	27.3	25.7	25.3	28.7	27	27.6	23.6	17.9	17.3		
Swedish Edmonds	9.9	5.1	11.3	7.7	8.6	14	16.4	15	10.4	9.7	6.7	1	1	4.1	1	4.3	1	1	1	5.1	1	7.3	11.9	21.7	18.6	19.6	15.1	16.1	11.6	13.1	8.4	9.3	6.9	5.7	16.4	16.4	11	4.9	7	8.7	6.9	5.6	1	1	1	1	1	1		

North Sound BH ASO Walkaway Chart 11/13/22 to 05/27/23



	2022 Week 22	2022 Week 24	2022 Week 25	2022 Week 26	2022 Week 27	2022 Week 28	2022 Week 30	2022 Week 32	2022 Week 33	2022 Week 37	2022 Week 39	2022 Week 40	2022 Week 41	2022 Week 43	2022 Week 45	2022 Week 47	2022 Week 48	2022 Week 49	2022 Week 50	2022 Week 51	2022 Week 53	2023 Week 02	2023 Week 04	2023 Week 05	2023 Week 10	2023 Week 11	2023 Week 13	2023 Week 15	2023 Week 17
Cascade Valley Hospital			1					1		1						1		1						1			1		
Island Health														1						1									
Island Hospital	1							1		1		1	1								1						1		
Peace Health United																			1			1							
Peace Island Health					1												1												
Providence		1							1																				
Providence, Everett														2			1												
San Juan Co Jail														1															
Skagit Valley																										1			
St. Joes																													1
St. Joseph	1				1			1	1																				
St. Joseph Medical Center																									1				
St. Josephs																												1	
St. Joseph's Hospital																										1			
Swedish Edmonds		1			1																								
Swedish Mill Creek						1		1																					
United General			1				1		1		1				3								1						
Whidbey Health ED		1		1																									