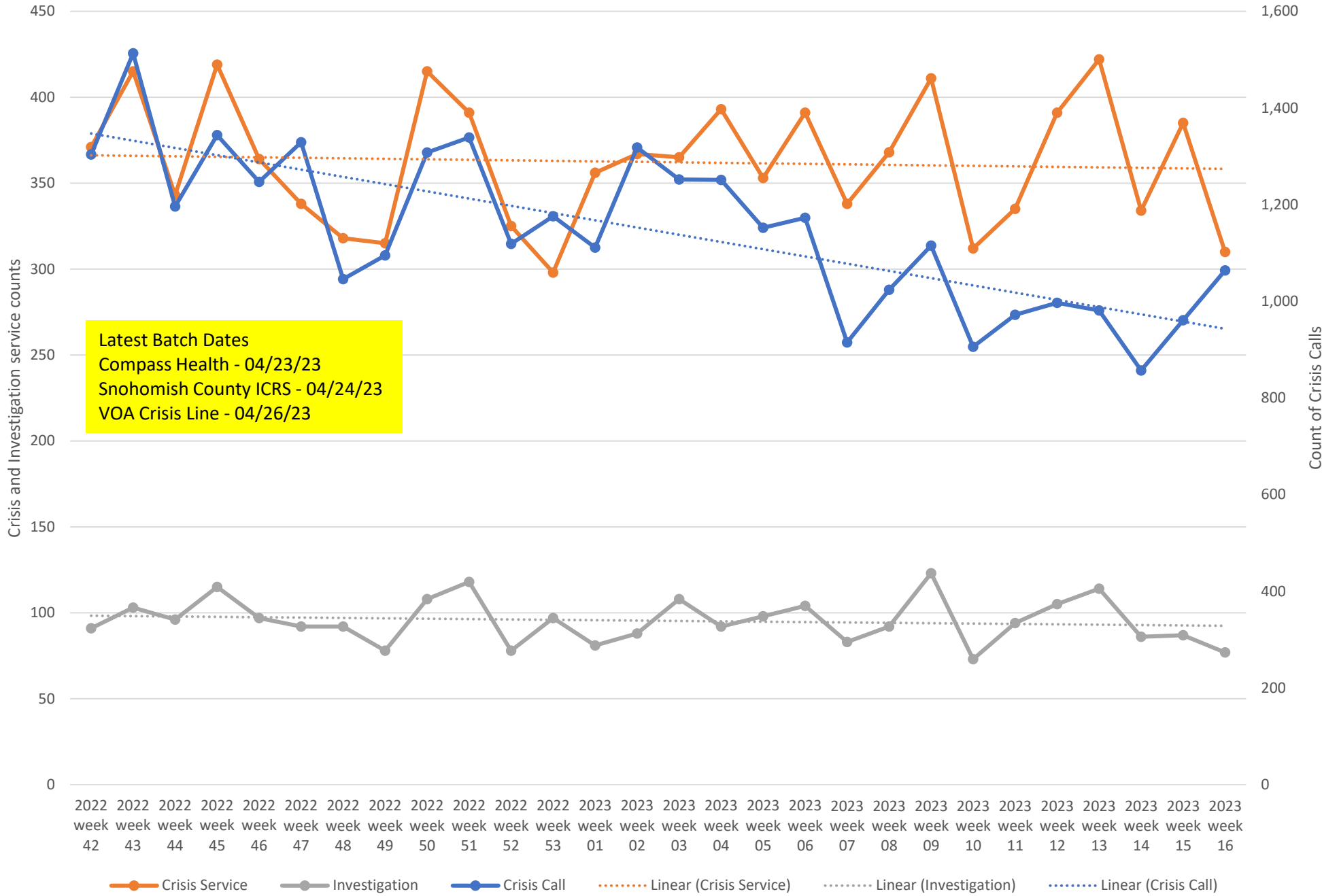




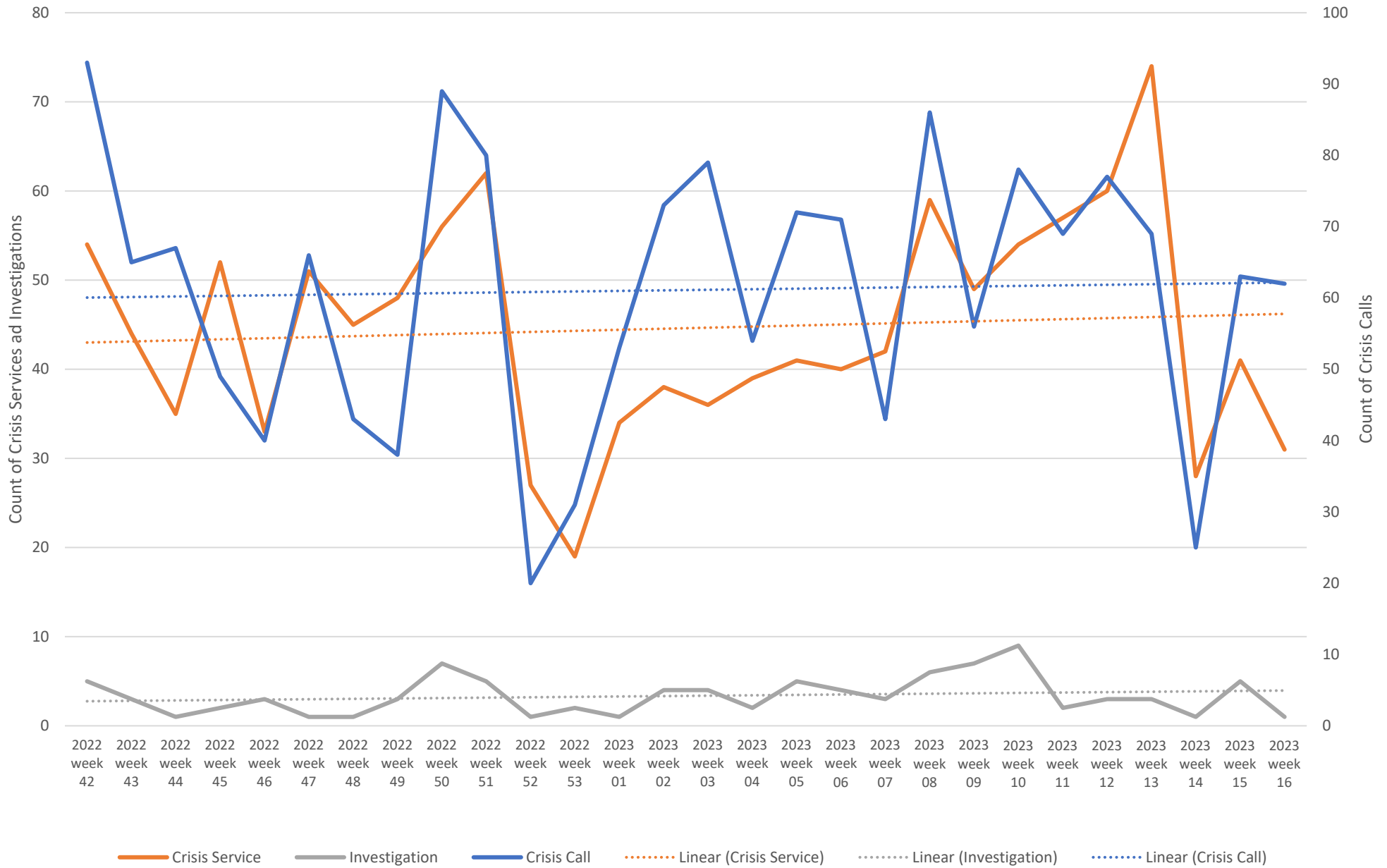
## Weekly Crisis Capacity Indicator Snapshot

Page 2	Crisis Data - dates 10/09/22 to 04/22/23
Page 3	Crisis Data: Ages 0-17 - dates 10/09/22 to 04/22/23
Page 4	All DCR Dispatches - dates 10/09/22 to 04/22/23
Page 5	Weekly Staff Count - Staff providing Crisis or Investigation services 10/09/22 to 04/22/23
Page 6	Hospital placement locations (Invol and Vol) - No adjustment has been made for timely data - recent weeks likely low
Page 7	Telehealth only, crisis and investigation services from 10/09/22 to 04/22/23
Page 8	Crisis Service Unit Percent - Crisis Service units divided by Crisis units + Investigation units
Page 9	Washington State Indicators of Anxiety or Depression Based on Reported Frequency of Symptoms During Last 7 Days
Page 10	Place of Service -Crisis Services, percent of total by week
Page 11	Place of Service -Investigations, percent of total by week
Page 12	New COVID-19 Cases Reported Weekly per 100,000 population - 06/08/22 to 04/26/23
Page 13	New COVID-19 Deaths Reported Weekly per 1,000,000 population - 06/08/22 to 04/26/23
Page 14	Total Hospitalized Adults - COVID-19 (confirmed or suspected) 7 day average
Page 15	North Sound BH ASO Walkaway Chart 10/09/22 to 04/22/23

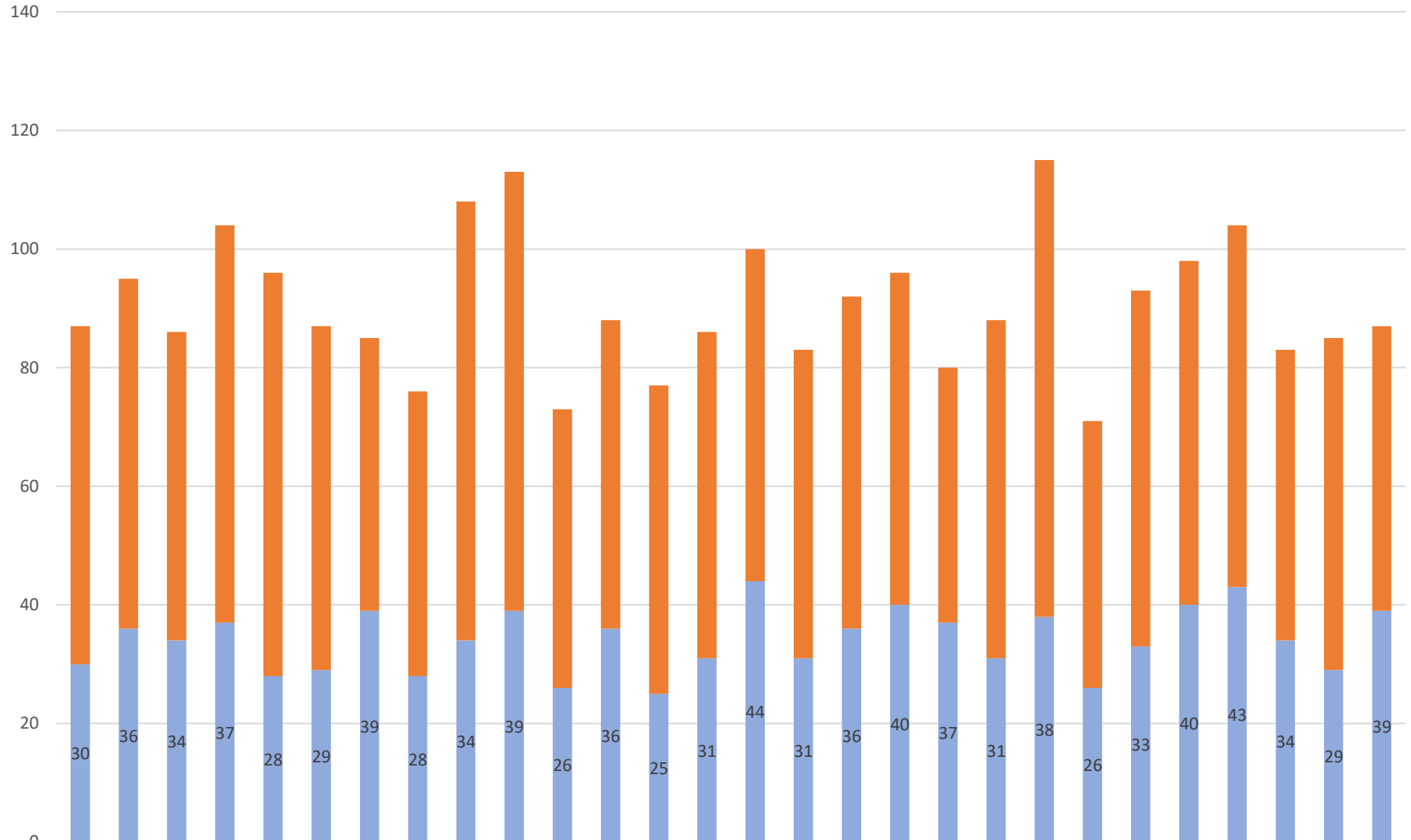
### Crisis Data - dates 10/09/22 to 04/22/23



Crisis Data: Ages 0-17 - dates 10/09/22 to 04/22/23

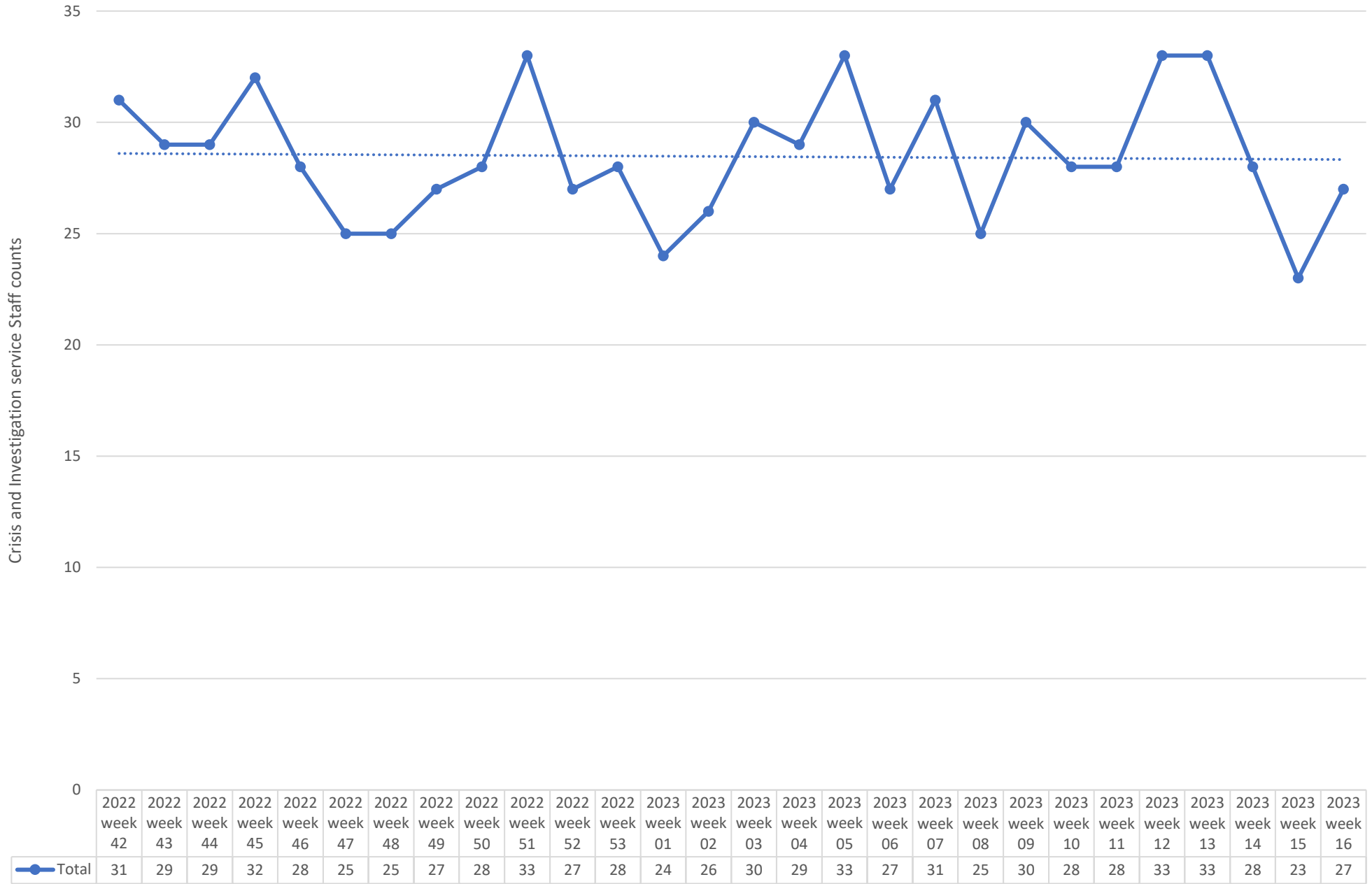


### All DCR Dispatches - dates 10/09/22 to 04/22/23



dispatch resulting in other outcome	57	59	52	67	68	58	46	48	74	74	47	52	52	55	56	52	56	56	43	57	77	45	60	58	61	49	56	48
dispatch resulting in detention	30	36	34	37	28	29	39	28	34	39	26	36	25	31	44	31	36	40	37	31	38	26	33	40	43	34	29	39

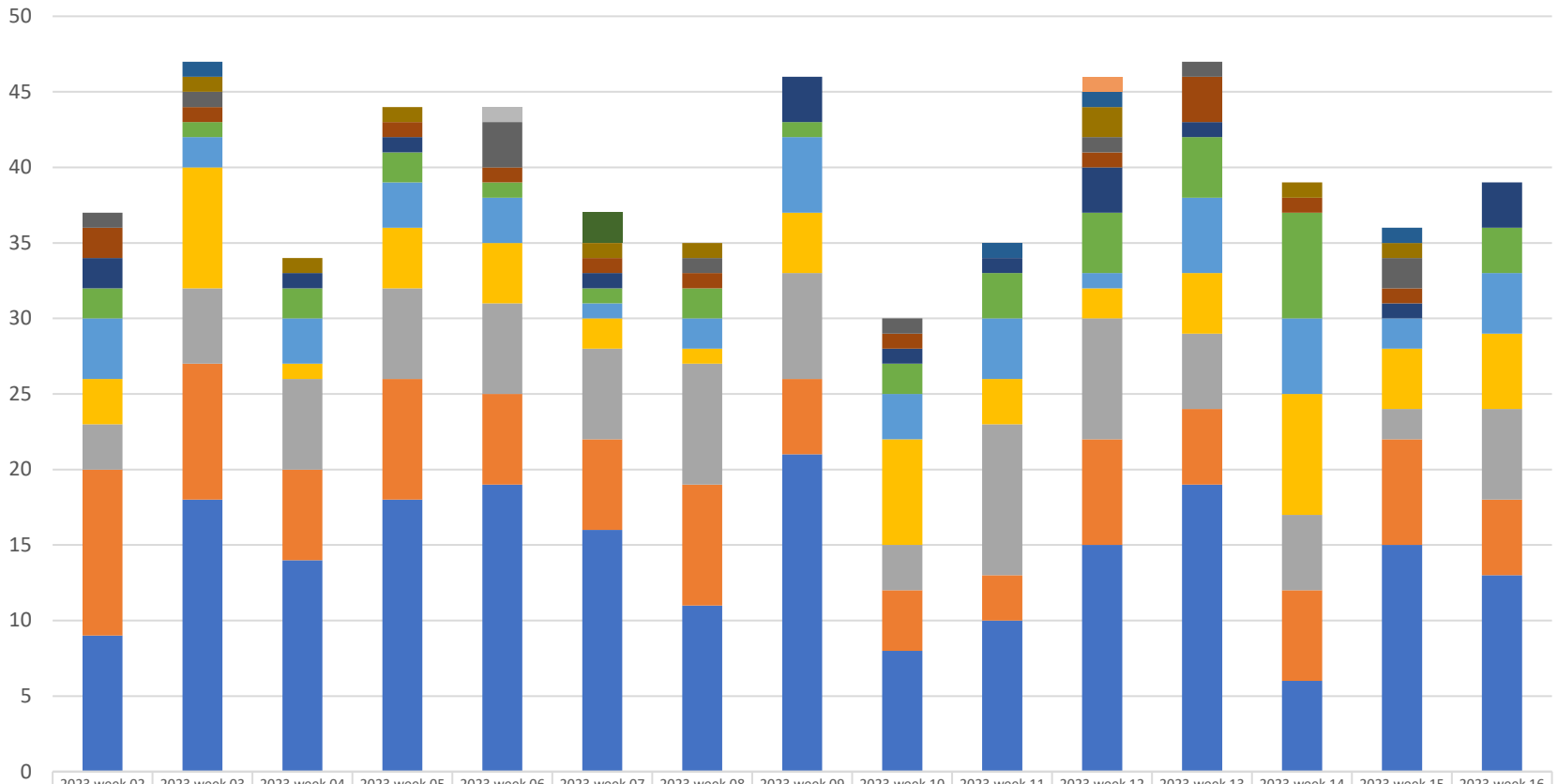
### Weekly Staff Count - Staff providing Crisis or Investigation services 10/09/22 to 04/22/23



2023 week 16 ending 01/00/00

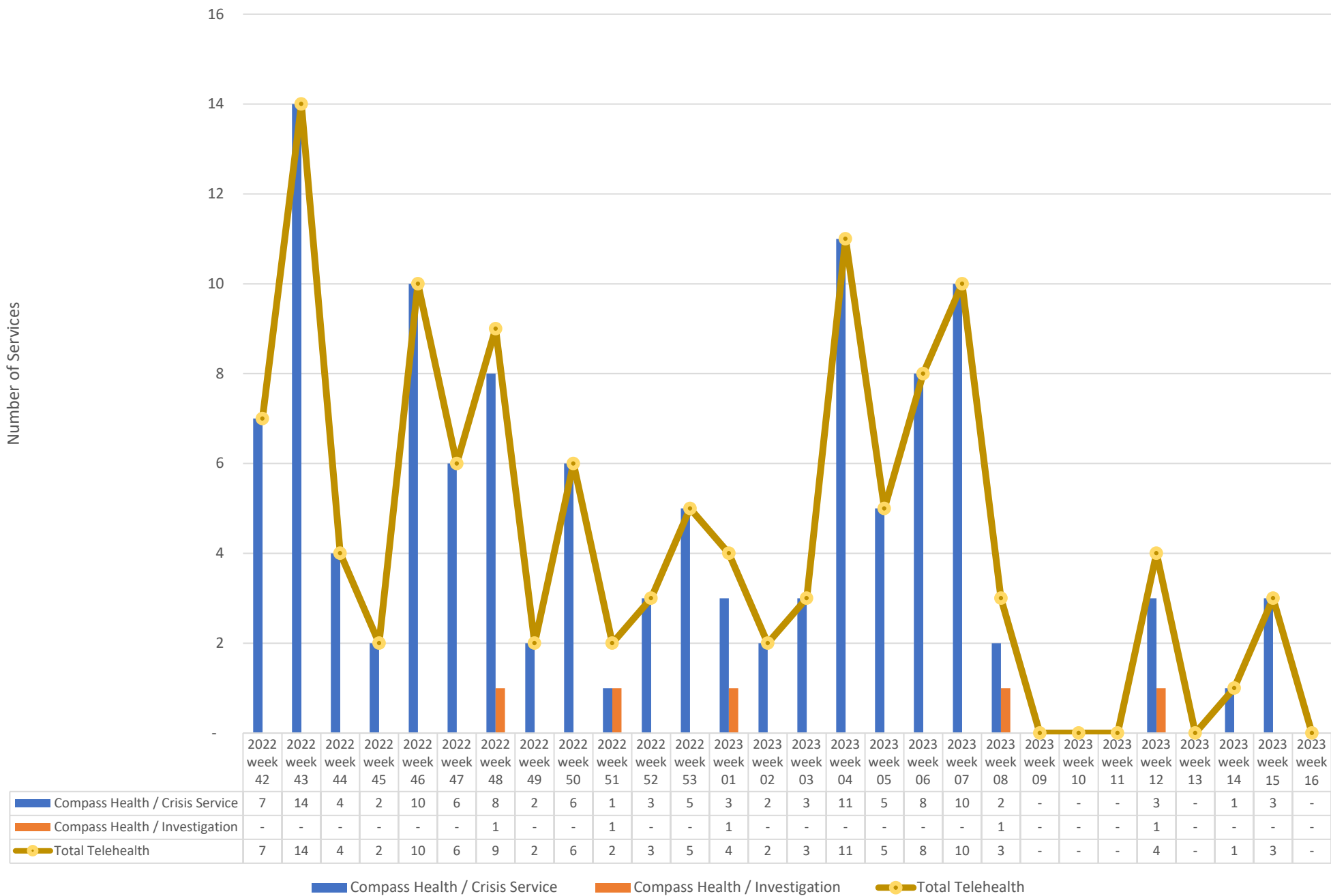
## Hospital placement locations (Invol and Vol) - No adjustment has been made for timely data - recent weeks likely low

Count of hospital placement locations in the dispatch record

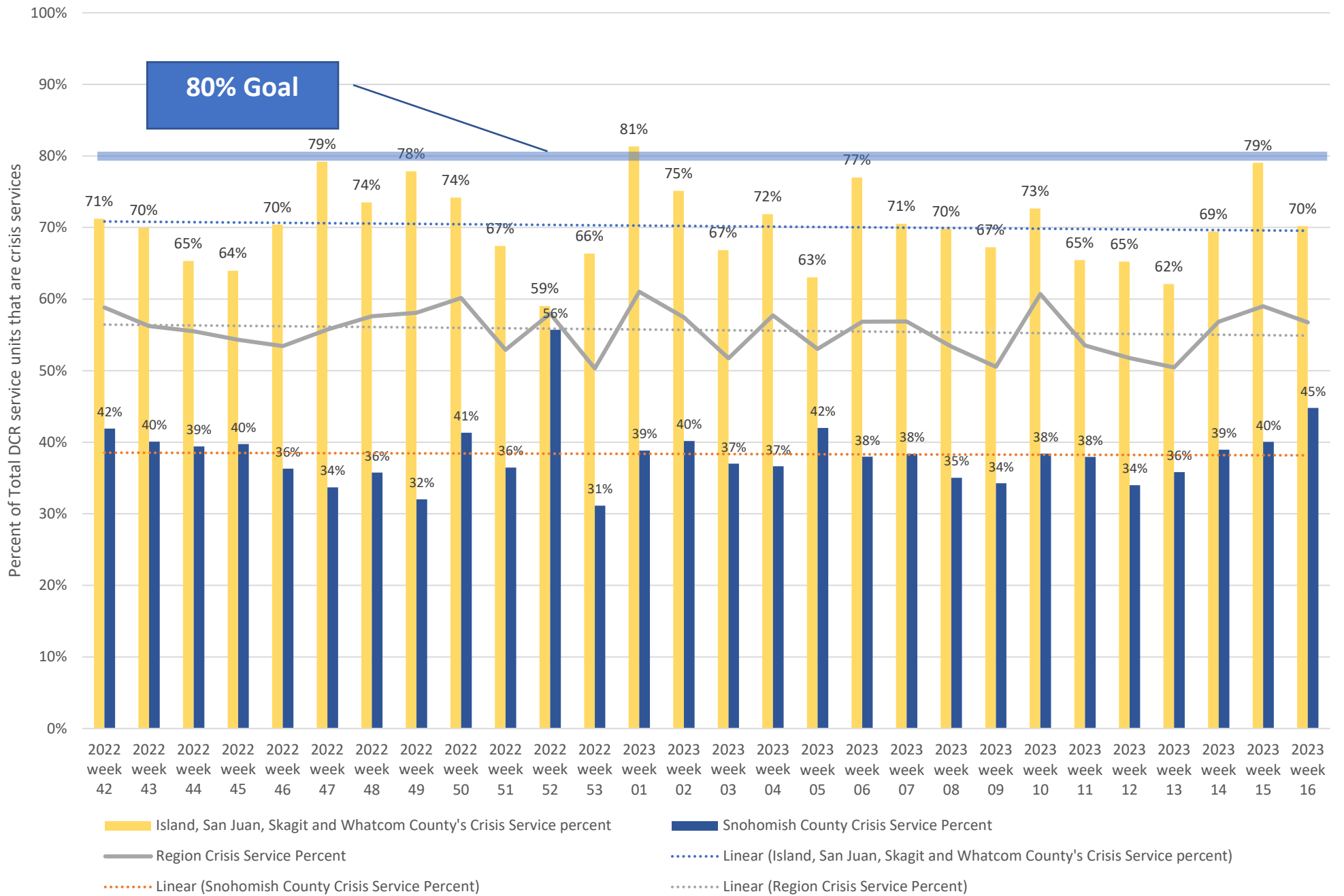


	2023 week 02	2023 week 03	2023 week 04	2023 week 05	2023 week 06	2023 week 07	2023 week 08	2023 week 09	2023 week 10	2023 week 11	2023 week 12	2023 week 13	2023 week 14	2023 week 15	2023 week 16
■ Cascade E&T Center					1										
■ SWEDISH MEDICAL CENTER CHERRY HILL											1				
■ Telecare Mental Health Serv Of WA										1					
■ Cascade Behavioral Hospital LLC						2									
■ Valley Cities Counseling And Consultation		1										1		1	
■ ABHS Chehalis		1	1	1		1	1				2		1	1	
■ VALLEY GENERAL HOSPITAL	1	1			3		1				1	1		2	
■ Telecare North Sound Evaluation and Treatment	2	1		1	1	1	1		1		1	3	1	1	
■ Mukilteo	2		1	1		1		3	1	1	3	1		1	3
■ BHC Fairfax Hospital INC	2	1	2	2	1	1	2	1	2	3	4	4	7		3
■ SMOKEY POINT BEHAVIORAL HOSPITAL	4	2	3	3	3	1	2	5	3	4	1	5	5	2	4
■ Skagit Valley Hospital	3	8	1	4	4	2	1	4	7	3	2	4	8	4	5
■ Peacehealth Bellingham	3	5	6	6	6	6	8	7	3	10	8	5	5	2	6
■ SWEDISH EDMONDS	11	9	6	8	6	6	8	5	4	3	7	5	6	7	5
■ Providence Everett	9	18	14	18	19	16	11	21	8	10	15	19	6	15	13

Telehealth only, crisis and investigation services from 10/09/22 to 04/22/23



# Crisis Service Unit Percent - Crisis Service units divided by Crisis units + Investigation units

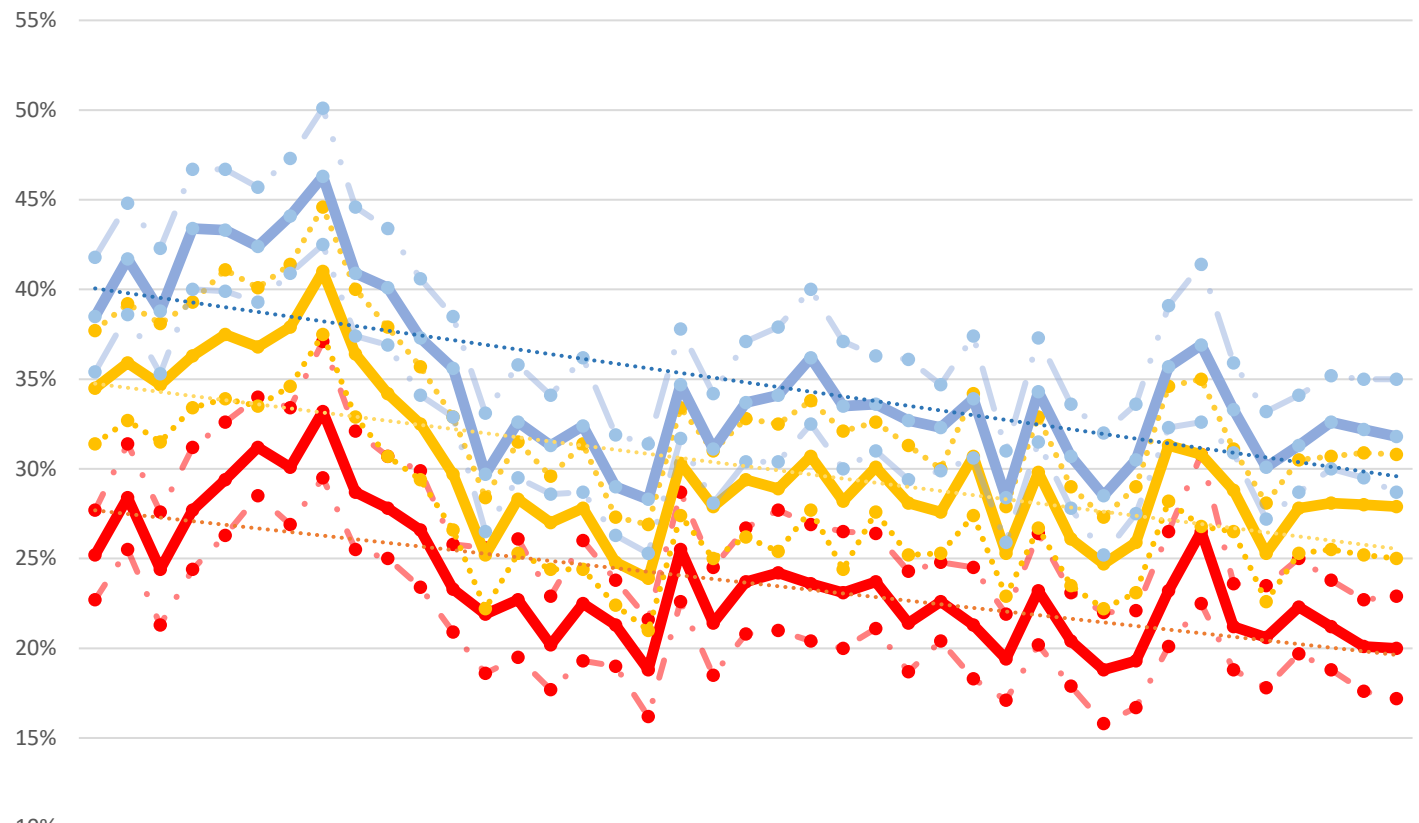




# Washington State Indicators of Anxiety or Depression Based on Reported Frequency of Symptoms During Last 7 Days

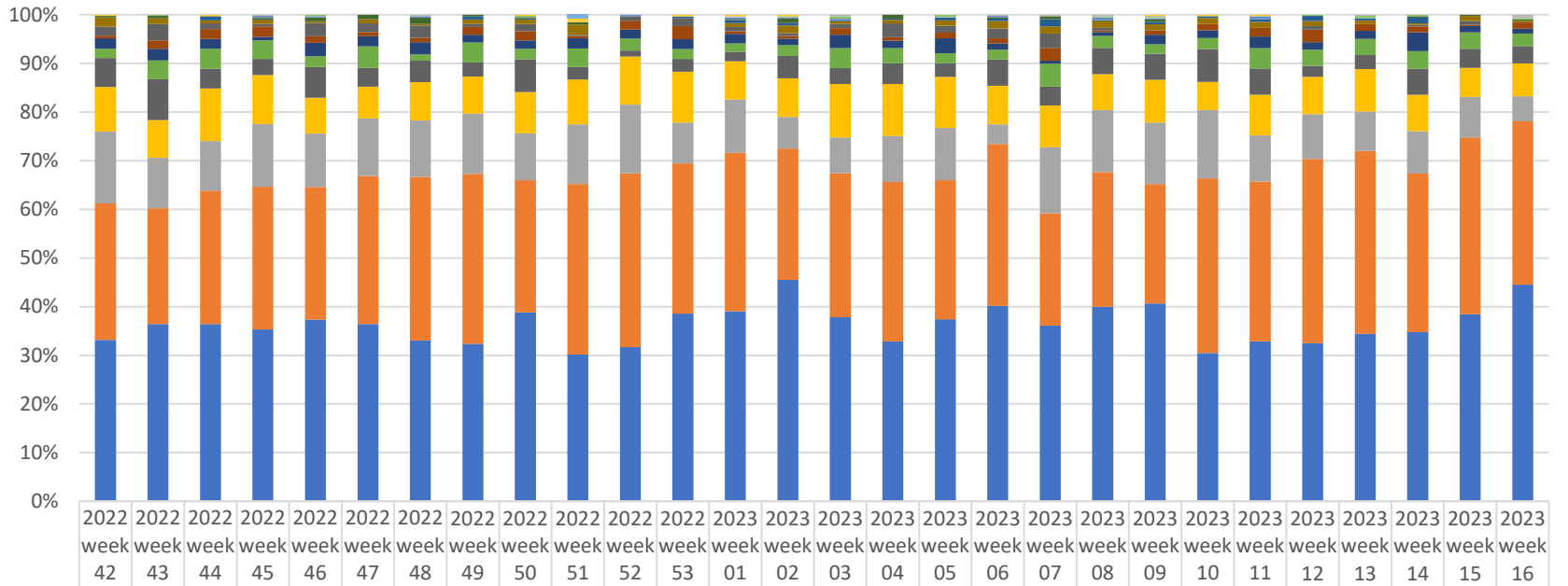
The U.S. Census Bureau, in collaboration with five federal agencies, launched the Household Pulse Survey to produce data on the social and economic impacts of Covid-19 on American households. The Household Pulse Survey was designed to gauge the impact of the pandemic on employment status, consumer spending, food security, housing, education disruptions, and dimensions of physical and mental wellness.

<https://data.cdc.gov/NCHS/Indicators-of-Anxiety-or-Depression-Based-on-Reported-Frequency-of-Symptoms-During-Last-7-Days>



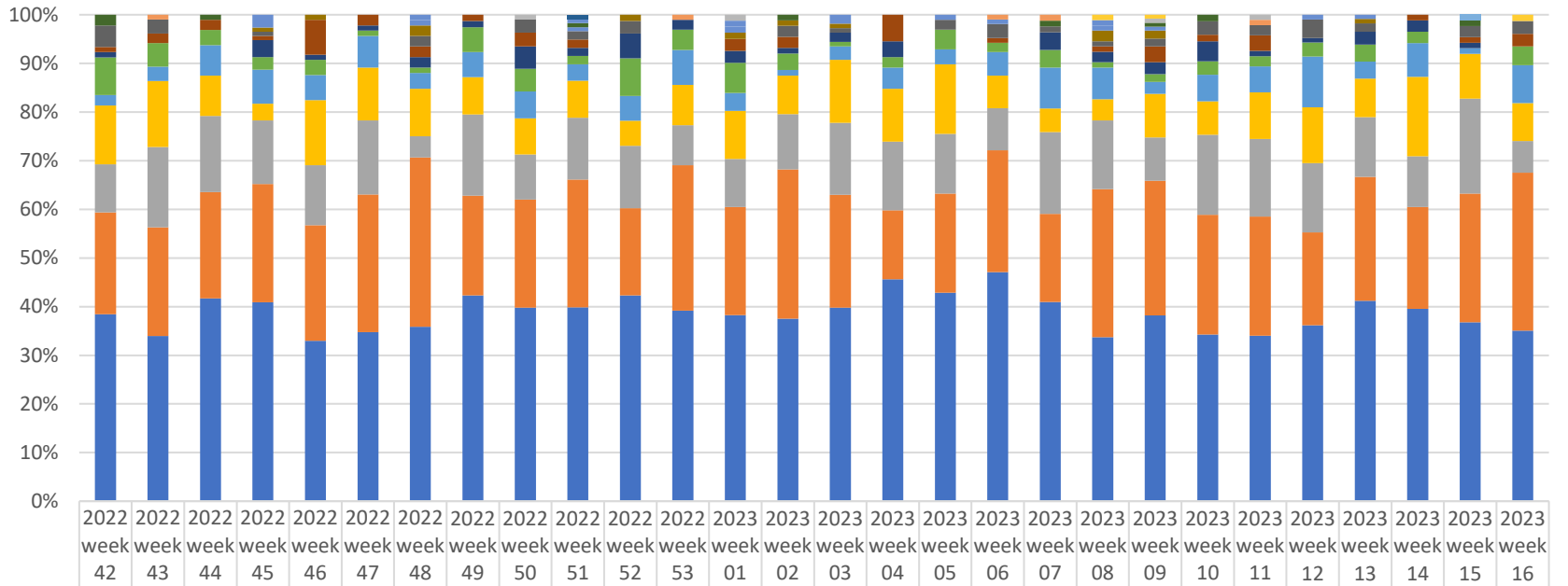
	30 Sep-12	14 Oct-20	28 Oct-20	11 Nov-20	25 Nov-20	09 Dec-20	06 Jan-21	20 Jan-21	03 Feb-21	17 Feb-21	03 Mar-21	17 Mar-21	14 Apr-21	28 Apr-21	12 May-21	26 May-21	09 Jun-21	23 Jun-21	21 Jul-21	04 Aug-21	18 Aug-21	01 Sep-21	15 Sep-21	29 Sep-21	01 Oct-21	29 Oct-21	26 Nov-21	02 Dec-21	30 Dec-21	27 Jan-22	01 Feb-22	29 Feb-22	27 Mar-22	01 Apr-22	29 Apr-22	27 May-22	24 Jun-22	22 Jul-22	19 Aug-22	16 Sep-22	14 Oct-22	11 Nov-22	09 Dec-22	06 Jan-23	04 Feb-23	01 Mar-23	29 Mar-23
% with Symptoms of Depressive Disorder low conf. level	23	26	21	24	26	29	27	30	26	25	23	21	19	20	18	19	19	16	23	19	21	21	20	20	21	19	20	18	17	20	18	16	17	20	23	19	18	20	19	18	20	19	18	17			
% with Symptoms of Depressive Disorder value	25	28	24	28	29	31	30	33	29	28	27	23	22	23	20	23	21	19	26	21	24	24	24	23	24	21	23	21	19	23	20	19	19	23	27	21	21	22	21	22	21	20	20				
% with Symptoms of Depressive Disorder high conf. level	28	31	28	31	33	34	33	37	32	31	30	26	26	26	23	26	24	22	29	25	27	28	27	27	26	24	25	25	22	26	23	22	22	27	31	24	24	25	24	23	23						
% with Symptoms of Anxiety Disorder low conf. level	31	33	32	33	34	35	38	33	31	29	27	22	25	24	24	22	21	27	25	26	25	28	24	28	25	25	27	23	27	24	22	23	28	27	31	29	25	28	28	28							
% with Symptoms of Anxiety Disorder value	35	36	35	36	38	37	38	41	36	34	33	30	25	28	27	28	25	24	30	28	29	29	31	28	30	28	28	31	25	30	26	25	26	31	31	29	25	28	28	28							
% with Symptoms of Anxiety Disorder high conf. level	38	39	38	39	41	40	41	45	40	38	36	33	28	32	30	31	27	27	33	31	33	33	34	32	33	31	30	34	28	33	29	27	29	35	35	31	28	31	31	31	31						
% with Symptoms of Anxiety or Depressive Disorder low conf. level	35	39	35	40	40	39	41	43	37	37	34	33	27	30	29	26	25	32	28	30	30	33	34	32	33	31	29	30	31	26	32	28	25	28	32	33	31	27	29	30	31	33	32	32			
% with Symptoms of Anxiety or Depressive Disorder value	39	42	39	43	43	42	44	46	41	40	37	36	30	33	31	32	29	28	35	31	34	34	36	34	34	33	32	34	28	34	31	29	31	36	37	33	33	30	31	33	33	32	32				
% with Symptoms of Anxiety or Depressive Disorder high conf. level	42	45	42	47	47	46	47	50	45	43	41	39	33	36	34	36	32	31	38	34	37	38	40	37	36	36	35	37	31	37	34	32	34	39	41	36	33	34	35	35	35						

### Place of Service -Crisis Services, percent of total by week



	2022 week 42	2022 week 43	2022 week 44	2022 week 45	2022 week 46	2022 week 47	2022 week 48	2022 week 49	2022 week 50	2022 week 51	2022 week 52	2022 week 53	2023 week 01	2023 week 02	2023 week 03	2023 week 04	2023 week 05	2023 week 06	2023 week 07	2023 week 08	2023 week 09	2023 week 10	2023 week 11	2023 week 12	2023 week 13	2023 week 14	2023 week 15	2023 week 16	
Custodial Care Facility																	1												
Skilled Nursing Facility										3																			
Nursing Facility	1		1						1	3		1	1	1								1	1	1					
Community Mental Health Center				1			1						1		1		1	1	1	1	1				1			2	
On Campus Outpatient Hospital		1			1				1					1	2					1	1			1	2	1		1	
Psych. Residential				1	1		1				1		1	1	1			1		2	1		2						
Group Home	1	2		1	3	3	4	1	1	2			1	3		3			1	2	1	2					1	1	1
Homeless Shelter			3	1				2	1			1	2	2	1	1	2	2	5		2	1	2	4	2	4			
School	7	5	2	4	1	3	1	3	4	8			3	6	2	3	4	6	5	5	5	4	4	4	3	1	4	1	
Telehealth	7	14	4	2	10	6	8	2	6	1	3	5	3	2	3	11	5	8	10	2				3		1	3		
Inpatient Hospital	2	7	7	9	5	3	3	5	8	2	6	8	2	2	5	3	4	4	9	1	4	4	6	10	6	4	1	4	
Inpatient Psychiatric Facility	8	10	7	3	10	7	8	5	7	8	6	6	7	5	10	6	11	5	2	3	8	5	8	6	7	13	5	3	
Prison Correctional Facility	7	16	14	16	8	15	4	13	9	15	8	6	6	8	15	12	7	8	16	9	8	7	14	13	14	12	13	8	
Assisted Living Facility	22	35	14	14	23	13	14	9	28	10	4	8	7	17	12	17	10	21	13	20	22	21	18	9	12	18	15	11	
Emergency Room Hospital	34	32	37	42	27	22	25	24	35	36	32	31	28	29	40	42	37	31	29	27	36	18	28	30	37	25	23	21	
Home	55	43	35	54	40	40	37	39	40	48	46	25	39	24	27	37	38	16	46	47	52	44	32	36	34	29	32	16	
Other Place of Service	104	99	94	123	99	103	107	110	113	137	116	92	116	99	108	129	101	130	78	102	101	112	110	148	159	109	140	104	
Office	123	151	125	148	136	123	105	102	161	118	103	115	139	167	138	129	132	157	122	147	167	95	110	127	145	116	148	138	

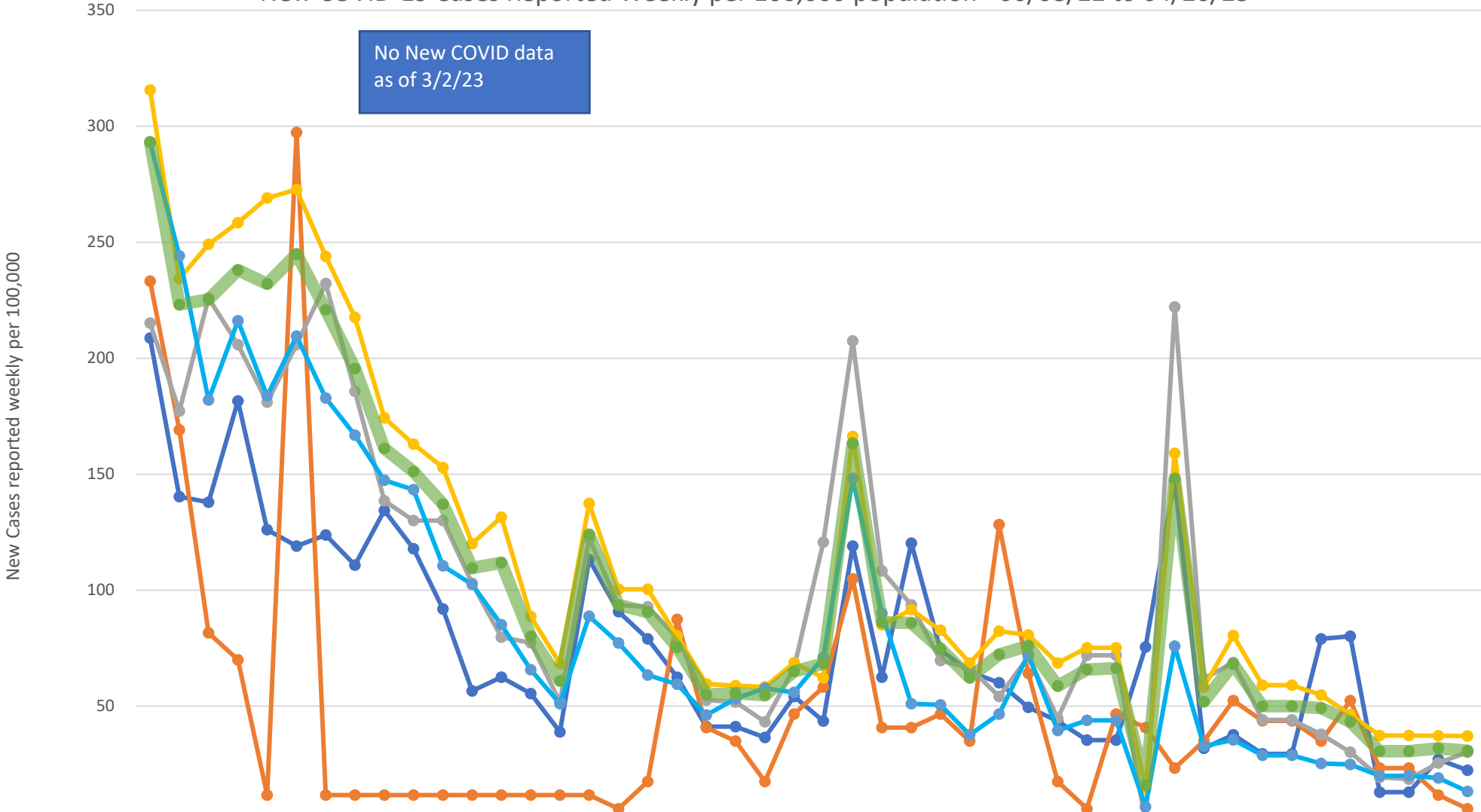
### Place of Service -Investigations, percent of total by week



Skilled Nursing Facility										1																			
Residential SUD																												1	
On Campus Outpatient Hospital																				1	1								1
Nursing Facility									1				1									1		1					
Homeless Shelter		1										1						1	1				1						
Telehealth							1			1			1							1				1					
School	2		1							1				1					1		1	1						1	
Community Mental Health Center				3			1			1			1		2		1	1		1	1				1				
Psych. Residential				1	1		2				1		1	1	1					2	2					1			
Assisted Living Facility	4	3		1			2		3	2	2			2	1		2	3	1	1	2	2	2	4	2		2	2	
Group Home	1	2	2	1	7	2	2	1	3	2			2	2		5		1		1	4	1	3			1	1	2	
Home	1			4	1	1	2	1	5	2	4	2	2	1	2	3			3	2	3	3	1	1	3	2	1		
Office	7	5	3	3	3	1	1	4	5	2	6	4	5	3	1	2	4	2	3	1	2	2	2	3	4	2		3	
Inpatient Hospital	2	3	6	8	5	6	3	4	6	4	4	7	3	1	3	4	3	5	7	6	3	4	5	11	4	6	1	6	
Inpatient Psychiatric Facility	11	14	8	4	13	10	9	6	8	9	4	8	8	7	14	10	14	7	4	4	11	5	9	12	9	14	8	6	
Prison Correctional Facility	9	17	15	15	12	14	4	13	10	15	10	8	8	10	16	13	12	9	14	13	11	12	15	15	14	9	17	5	
Other Place of Service	19	23	21	28	23	26	32	16	24	31	14	29	18	27	25	13	20	26	15	28	34	18	23	20	29	18	23	25	
Emergency Room Hospital	35	35	40	47	32	32	33	33	43	47	33	38	31	33	43	42	42	49	34	31	47	25	32	38	47	34	32	27	

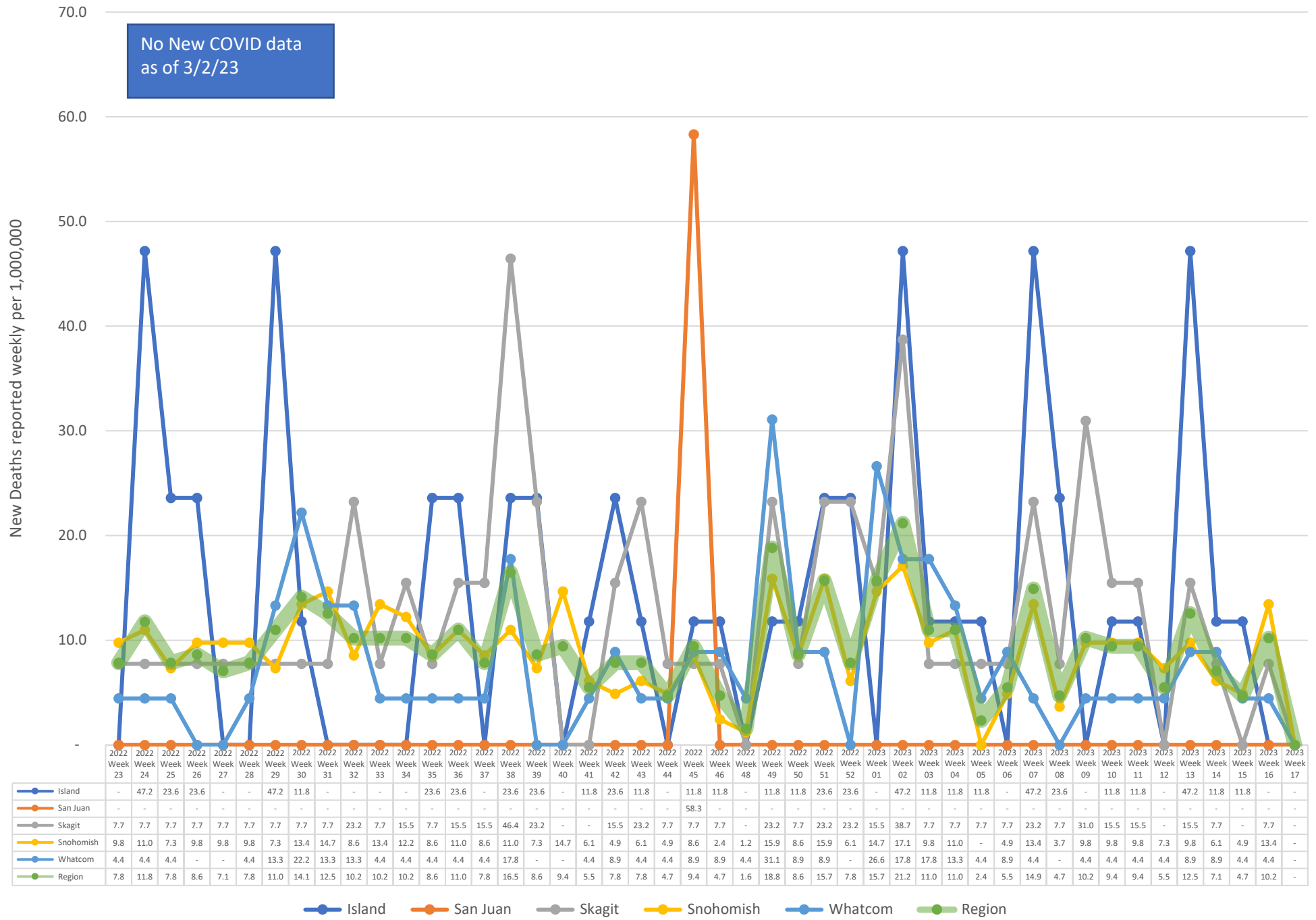
# New COVID-19 Cases Reported Weekly per 100,000 population - 06/08/22 to 04/26/23

No New COVID data as of 3/2/23



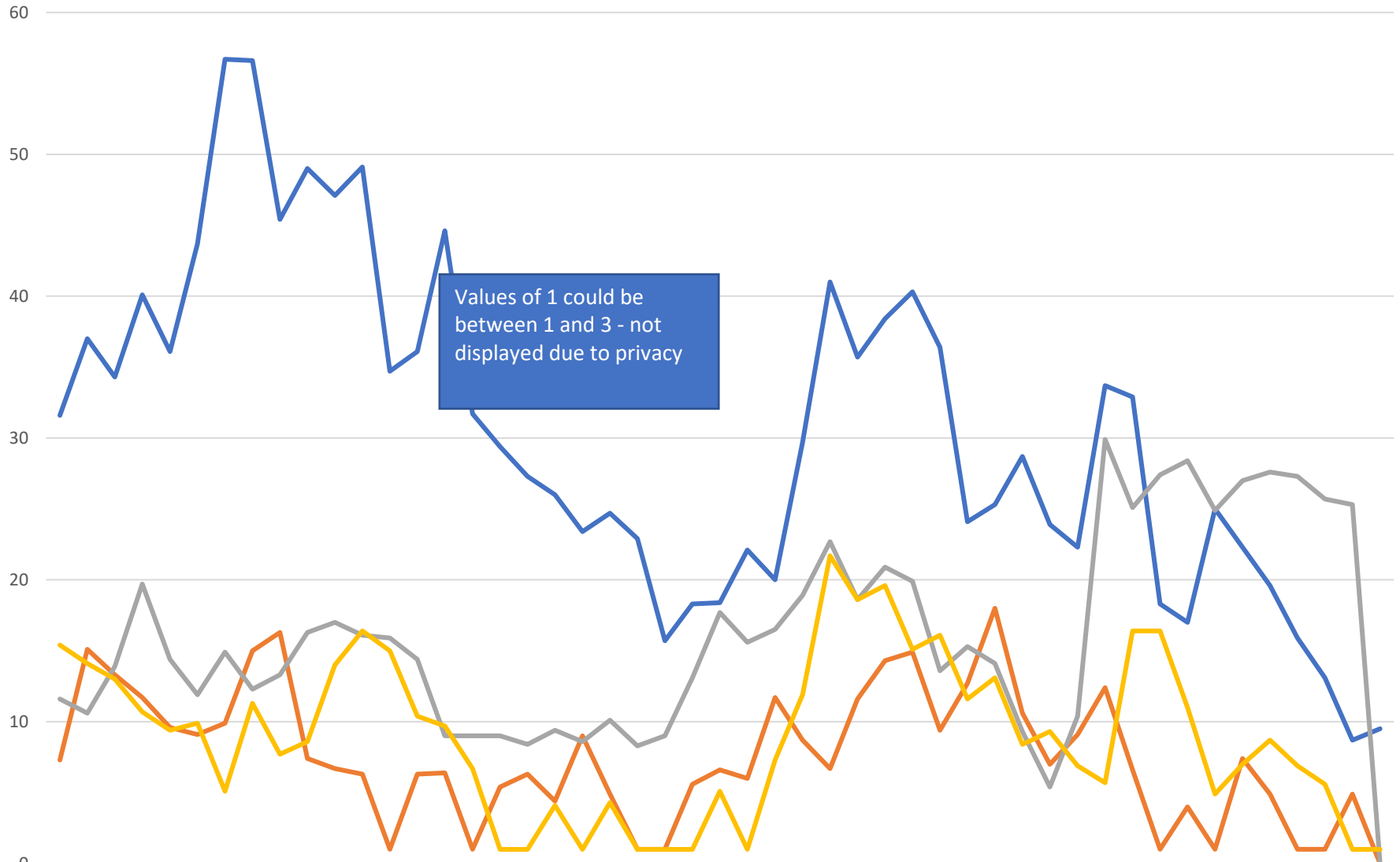
	2022 Week 23	2022 Week 24	2022 Week 25	2022 Week 26	2022 Week 27	2022 Week 28	2022 Week 29	2022 Week 30	2022 Week 31	2022 Week 32	2022 Week 33	2022 Week 34	2022 Week 35	2022 Week 36	2022 Week 37	2022 Week 38	2022 Week 39	2022 Week 40	2022 Week 41	2022 Week 42	2022 Week 43	2022 Week 44	2022 Week 45	2022 Week 46	2022 Week 48	2022 Week 49	2022 Week 50	2022 Week 51	2022 Week 52	2023 Week 01	2023 Week 02	2023 Week 03	2023 Week 04	2023 Week 05	2023 Week 06	2023 Week 07	2023 Week 08	2023 Week 09	2023 Week 10	2023 Week 11	2023 Week 12	2023 Week 13	2023 Week 14	2023 Week 15	2023 Week 16	2023 Week 17
Island	209	140	138	182	126	119	124	111	134	118	92	57	62	55	39	113	91	79	62	41	41	37	54	44	119	62	120	74	65	60	50	44	35	35	75	147	32	38	29	29	79	80	13	13	27	22
San Juan	233	169	82	70	12	297	12	12	12	12	12	12	12	12	12	6	17	87	41	35	17	47	58	105	41	41	47	35	128	64	17	6	47	41	23	35	52	44	44	35	52	23	23	12	6	
Skagit	215	177	226	206	181	206	232	186	139	130	130	103	80	77	52	122	94	93	80	53	52	43	67	121	207	108	94	70	67	54	71	45	72	72	-	222	62	69	44	44	38	30	19	19	26	30
Snohomish	316	234	249	258	269	273	244	218	174	163	153	120	132	89	68	137	100	100	80	60	59	58	69	62	166	85	92	83	69	82	81	69	75	75	14	159	58	80	59	59	55	46	37	37	37	37
Whatcom	293	244	182	216	184	209	183	167	147	143	111	103	85	66	51	89	77	63	59	46	53	58	56	71	148	90	51	51	38	47	72	40	44	44	7	76	33	36	29	29	25	25	20	20	19	13
Region	293	223	225	238	232	245	221	196	161	151	137	110	112	80	61	124	94	91	75	55	56	55	65	68	163	86	86	75	62	72	76	59	66	66	16	148	52	68	50	50	49	43	31	31	32	31

# New COVID-19 Deaths Reported Weekly per 1,000,000 population - 06/08/22 to 04/26/23



Island San Juan Skagit Snohomish Whatcom Region

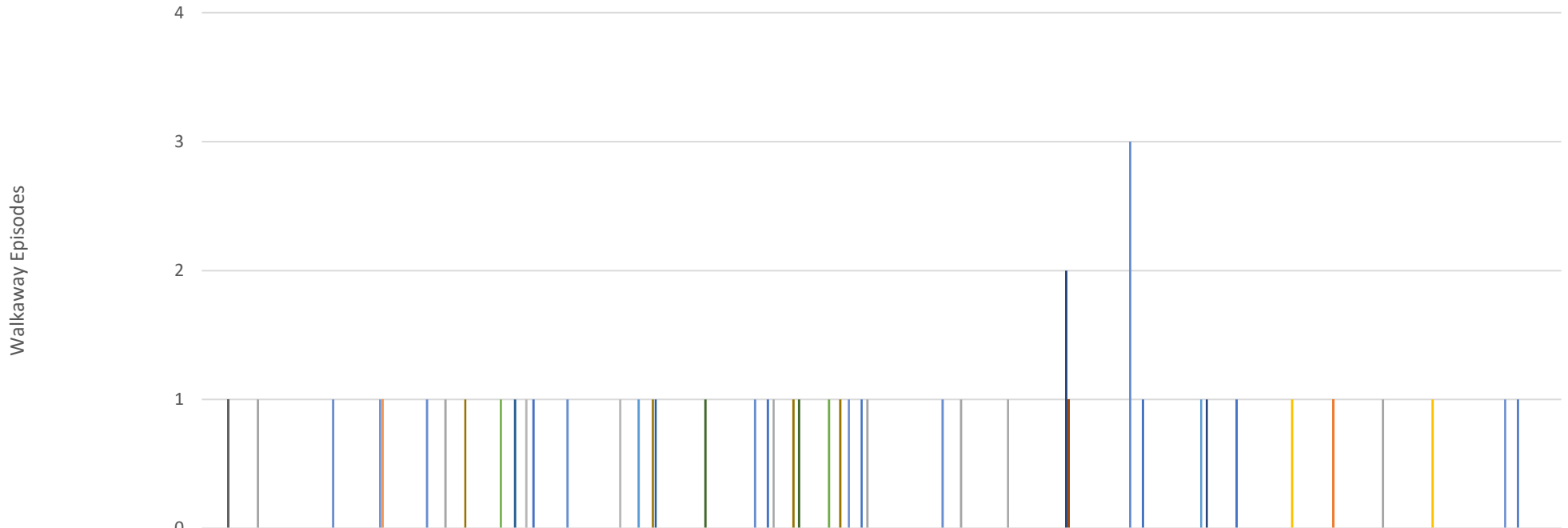
# Total Hospitalized Adults - COVID-19 (confirmed or suspected) 7 day average



Values of 1 could be between 1 and 3 - not displayed due to privacy

	5/2 0/2	5/2 7/2	6/3/ 202	6/1 0/2	6/1 7/2	6/2 4/2	7/1/ 202	7/8/ 202	7/1 5/2	7/2 2/2	7/2 9/2	8/5/ 202	8/1 2/2	8/1 9/2	8/2 6/2	9/2/ 202	9/9/ 202	9/1 6/2	9/2 3/2	9/3 0/2	10/ 7/2	10/ 14/ 202	10/ 21/ 202	10/ 28/ 202	11/ 4/2 022	11/ 11/ 202	11/ 18/ 202	11/ 25/ 202	12/ 2/2 022	12/ 9/2 022	12/ 16/ 202	12/ 23/ 202	12/ 30/ 202	1/6/ 202	1/1 3/2	1/2 0/2	1/2 7/2	2/3/ 202	2/1 0/2	2/1 7/2	2/2 4/2	3/3/ 202	3/1 0/2	3/1 7/2	3/2 4/2	3/3 1/2	4/7/ 202	4/1 4/2	4/2 1/2
Prov. Everett	31.6	37	34.3	40.1	36.1	43.7	56.7	56.6	45.4	49	47.1	49.1	34.7	36.1	44.6	31.7	29.4	27.3	26	23.4	24.7	22.9	15.7	18.3	18.4	22.1	20	29.7	41	35.7	38.4	40.3	36.4	24.1	25.3	28.7	23.9	22.3	33.7	32.9	18.3	17	25	22.3	19.6	15.9	13.1	8.7	9.5
SVH	7.3	15.1	13.3	11.7	9.6	9.1	9.9	15	16.3	7.4	6.7	6.3	1	6.3	6.4	1	5.4	6.3	4.4	9	4.9	1	1	5.6	6.6	6	11.7	8.7	6.7	11.6	14.3	14.9	9.4	12.7	18	10.6	7	9.1	12.4	6.6	1	4	1	7.4	4.9	1	1	4.9	0
ST Joe	11.6	10.6	13.9	19.7	14.4	11.9	14.9	12.3	13.3	16.3	17	16.1	15.9	14.4	9	9	9	8.4	9.4	8.6	10.1	8.3	9	13.1	17.7	15.6	16.5	18.9	22.7	18.6	20.9	19.9	13.6	15.3	14.1	9.3	5.4	10.4	29.9	25.1	27.4	28.4	24.9	27	27.6	27.3	25.7	25.3	0
Swedish Edmonds	15.4	14.1	13	10.7	9.4	9.9	5.1	11.3	7.7	8.6	14	16.4	15	10.4	9.7	6.7	1	1	4.1	1	4.3	1	1	1	5.1	1	7.3	11.9	21.7	18.6	19.6	15.1	16.1	11.6	13.1	8.4	9.3	6.9	5.7	16.4	16.4	11	4.9	7	8.7	6.9	5.6	1	1

## North Sound BH ASO Walkaway Chart 10/09/22 to 04/22/23



	2022 Week 15	2022 Week 16	2022 Week 17	2022 Week 18	2022 Week 19	2022 Week 22	2022 Week 24	2022 Week 25	2022 Week 26	2022 Week 27	2022 Week 28	2022 Week 30	2022 Week 32	2022 Week 33	2022 Week 37	2022 Week 39	2022 Week 40	2022 Week 41	2022 Week 43	2022 Week 45	2022 Week 47	2022 Week 48	2022 Week 49	2022 Week 50	2022 Week 51	2022 Week 53	2023 Week 02	2023 Week 04	2023 Week 05
Cascade Valley Hospital								1					1		1						1		1						1
Island Health																										1			
Island Hospital		1				1							1		1		1	1									1		
Peace Health United																								1			1		
Peace Island Health										1												1							
Providence						1								1															
Providence, Everett																				2		1							
San Juan Co Jail																				1									
Skagit Valley	1																												
St. Joseph						1				1			1	1															
Swedish Edmonds						1				1																			
Swedish Mill Creek											1		1																
United General			1	1	1				1			1		1		1					3							1	
Whidbey Health				1																									
Whidbey Health ED						1			1																				