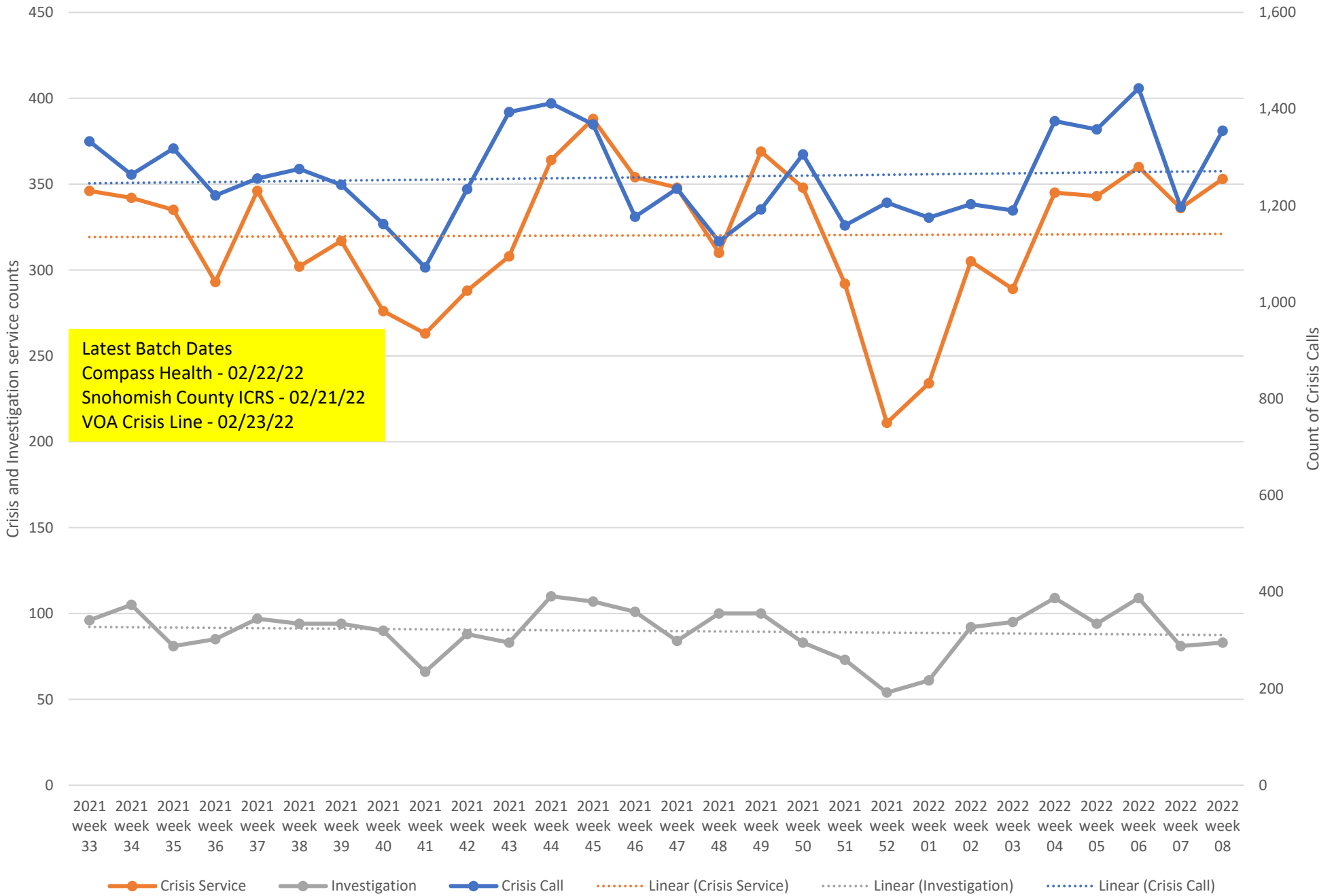




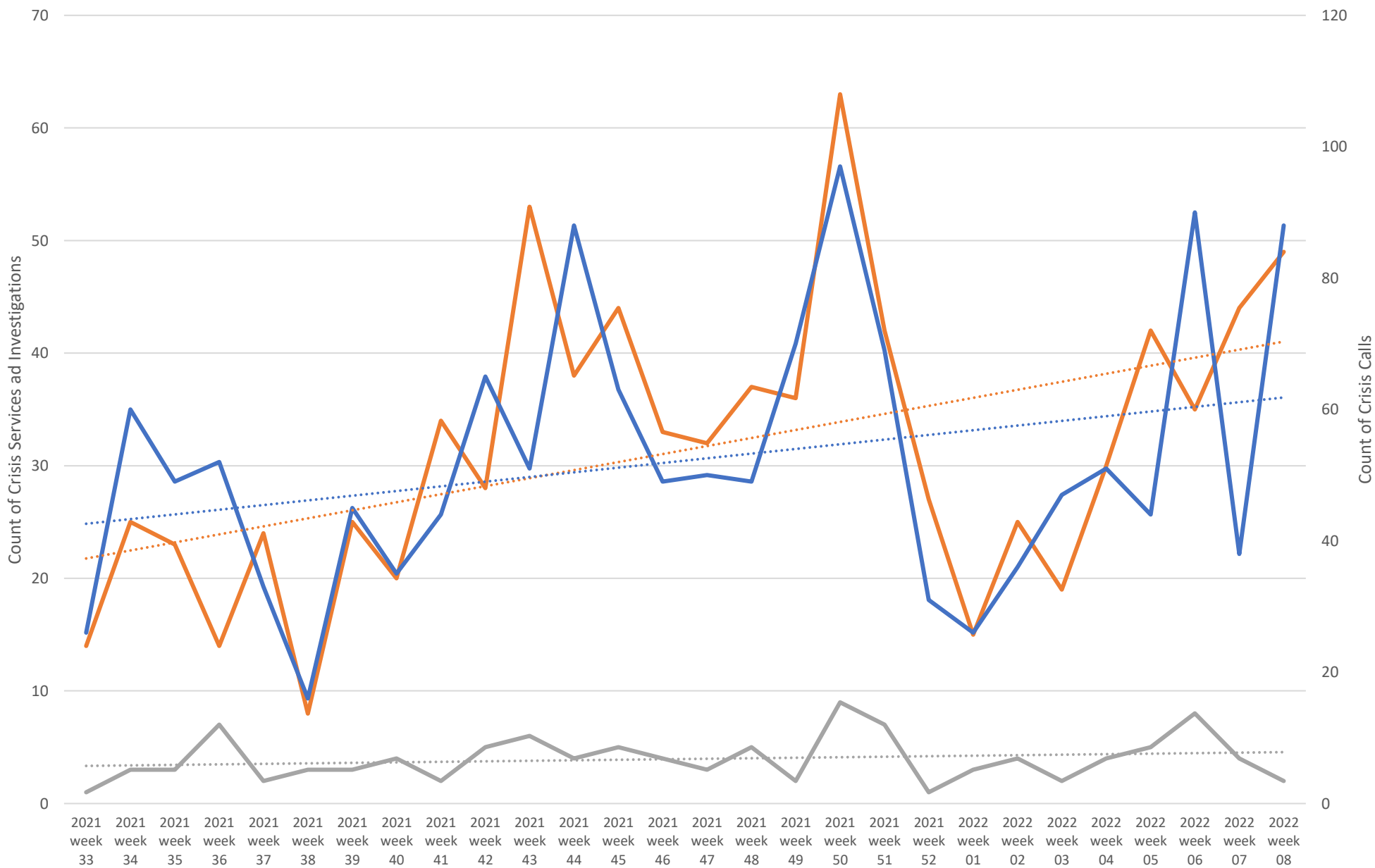
Weekly Crisis Capacity Indicator Snapshot

Page 2	Crisis Data - dates 08/08/21 to 02/19/22
Page 3	Crisis Data: Ages 0-17 - dates 08/08/21 to 02/19/22
Page 4	All DCR Dispatches - dates 08/08/21 to 02/19/22
Page 5	Weekly Staff Count - Staff providing Crisis or Investigation services 08/08/21 to 02/19/22
Page 6	Hospital placement locations (Invol and Vol) - No adjustment has been made for timely data - recent weeks likely low
Page 7	Telehealth only, crisis and investigation services from 08/08/21 to 02/19/22
Page 8	Crisis Service Unit Percent - Crisis Service units divided by Crisis units + Investigation units
Page 9	Washington State Indicators of Anxiety or Depression Based on Reported Frequency of Symptoms During Last 7 Days
Page 10	Place of Service -Crisis Services, percent of total by week
Page 11	Place of Service -Investigations, percent of total by week
Page 12	New COVID-19 Cases Reported Weekly per 100,000 population - 11/17/20 to 02/23/22
Page 13	Total Hospitalized Adults - COVID-19 (confirmed or suspected) 7 day average
Page 14	HB 1310 Data collected with LE Declines 08/08/21 to 02/19/22
Page 15	HB 1310 Data collected with LE Response or Other 08/08/21 to 02/19/22

Crisis Data - dates 08/08/21 to 02/19/22

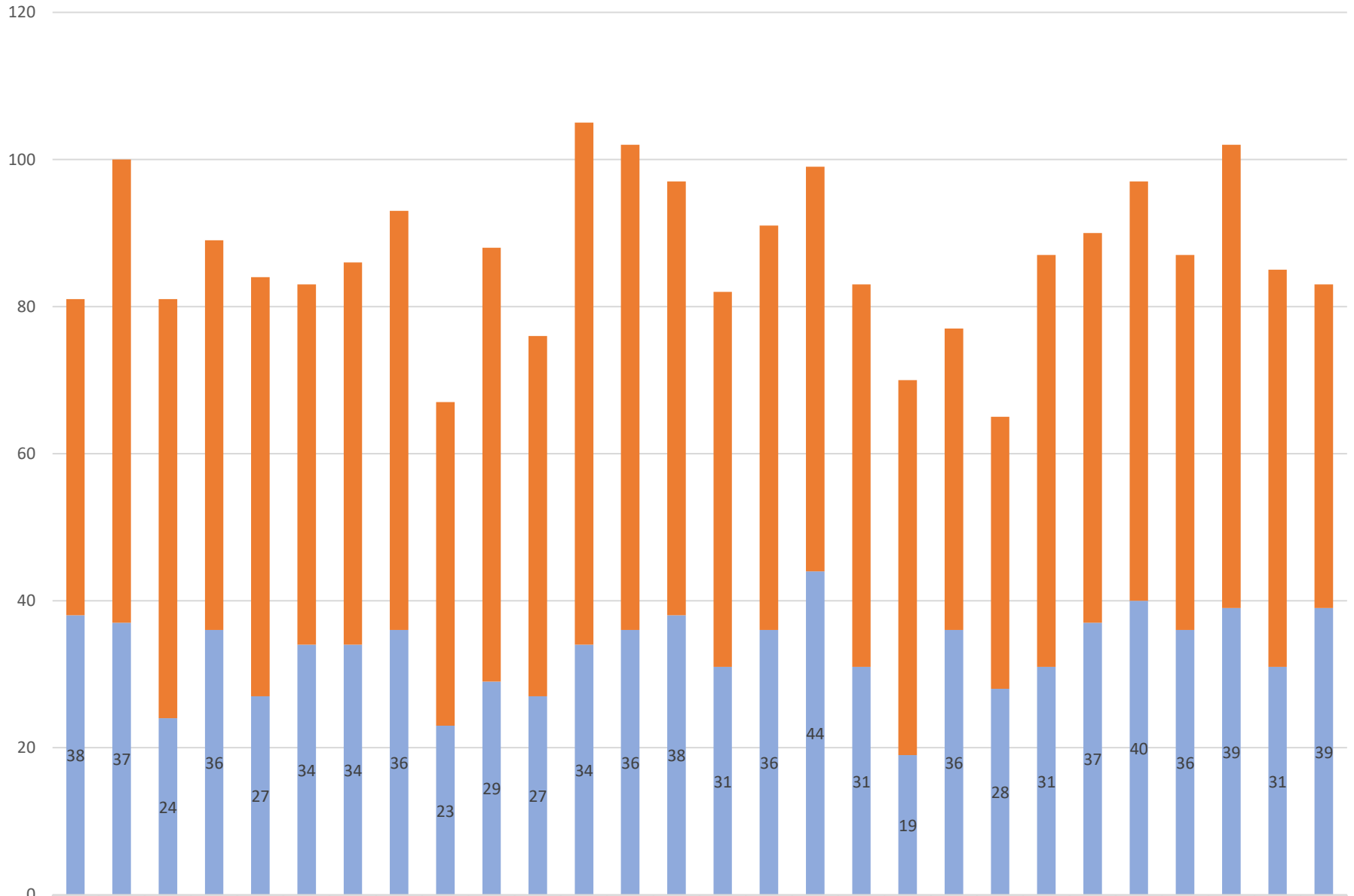


Crisis Data: Ages 0-17 - dates 08/08/21 to 02/19/22



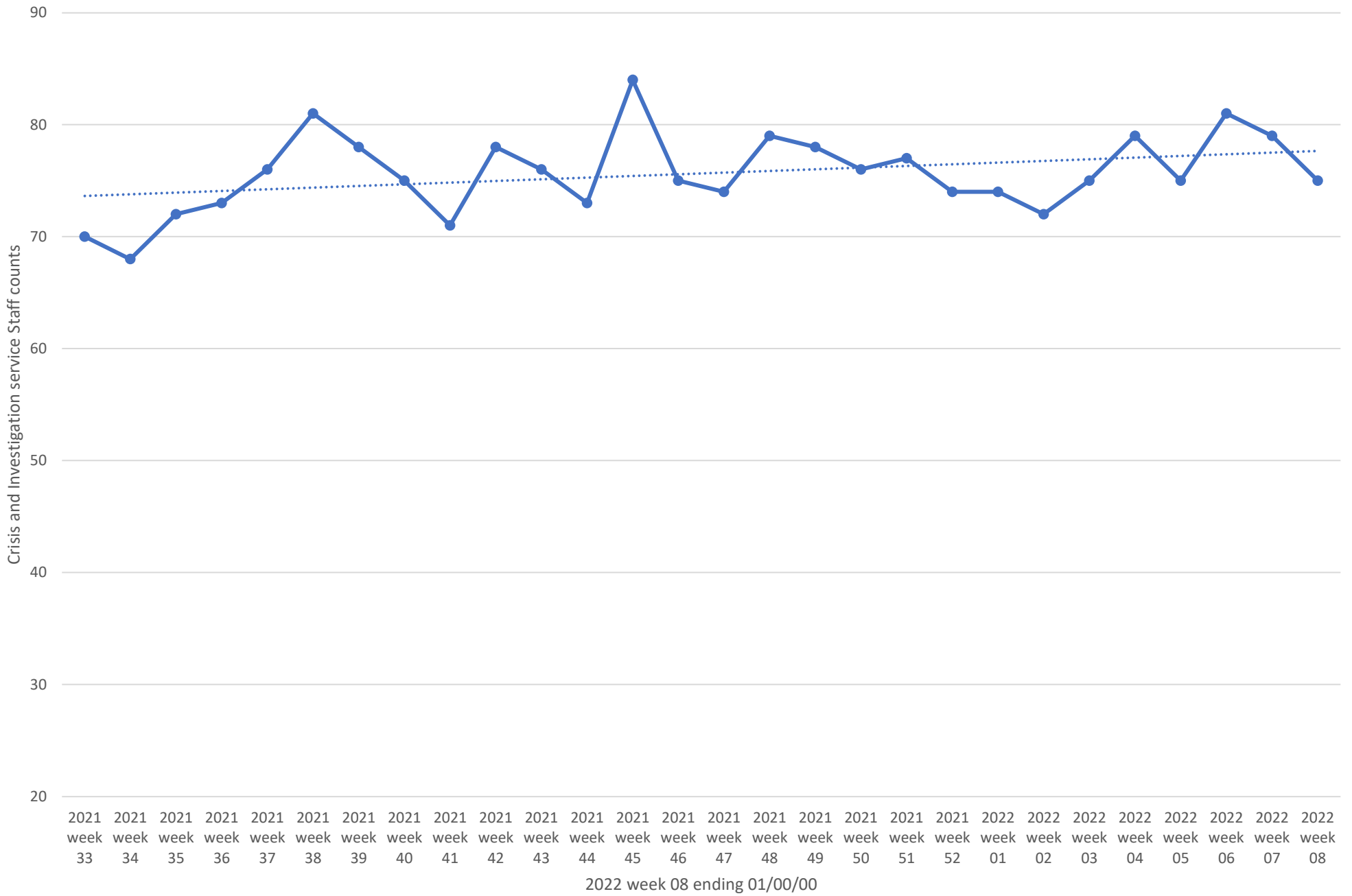
— Crisis Service
 — Investigation
 — Crisis Call
 ⋯ Linear (Crisis Service)
 ⋯ Linear (Investigation)
 ⋯ Linear (Crisis Call)

All DCR Dispatches - dates 08/08/21 to 02/19/22

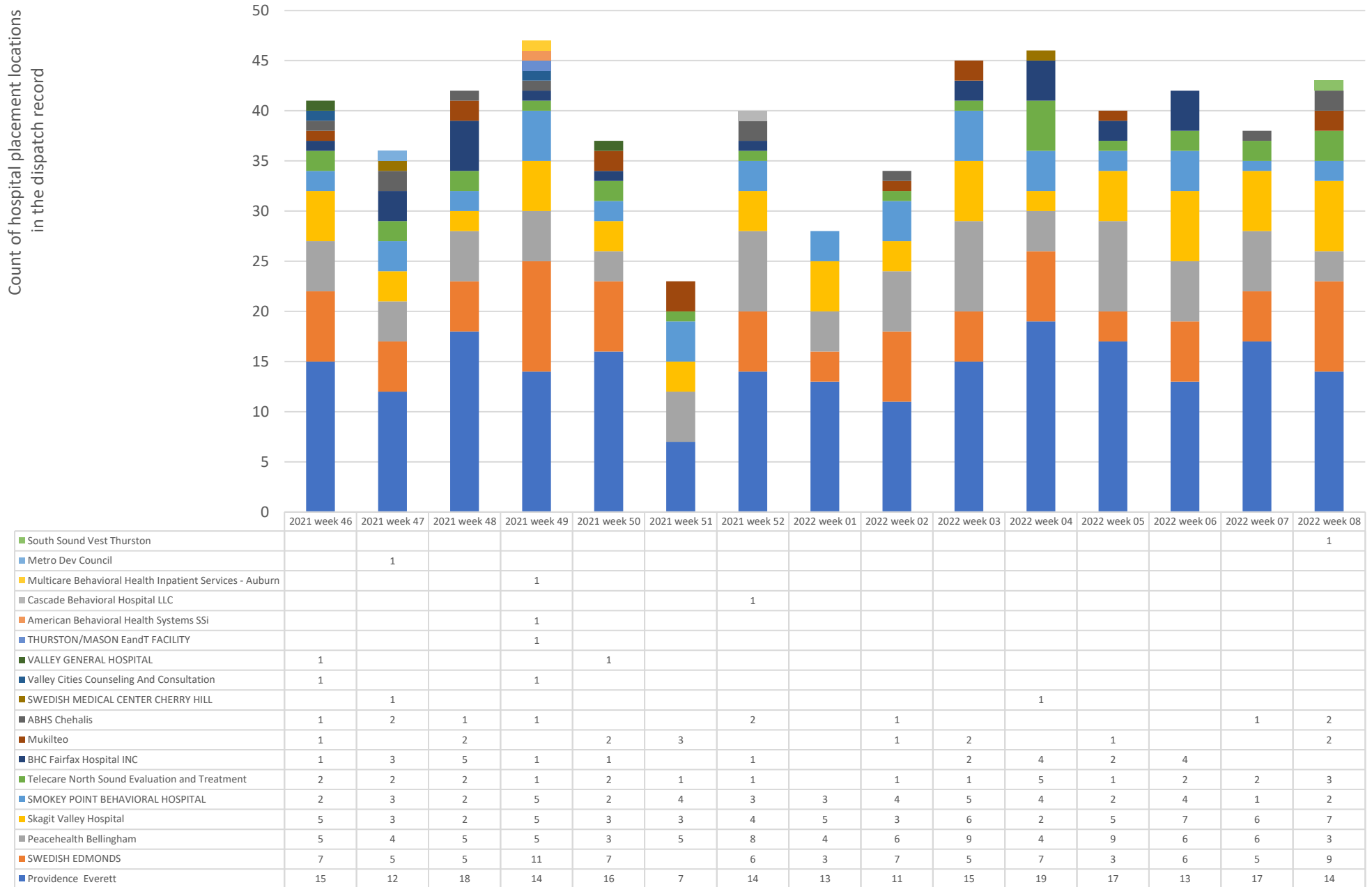


	2021 week 33	2021 week 34	2021 week 35	2021 week 36	2021 week 37	2021 week 38	2021 week 39	2021 week 40	2021 week 41	2021 week 42	2021 week 43	2021 week 44	2021 week 45	2021 week 46	2021 week 47	2021 week 48	2021 week 49	2021 week 50	2021 week 51	2021 week 52	2022 week 01	2022 week 02	2022 week 03	2022 week 04	2022 week 05	2022 week 06	2022 week 07	2022 week 08
dispatch resulting in other outcome	43	63	57	53	57	49	52	57	44	59	49	71	66	59	51	55	55	52	51	41	37	56	53	57	51	63	54	44
dispatch resulting in detention	38	37	24	36	27	34	34	36	23	29	27	34	36	38	31	36	44	31	19	36	28	31	37	40	36	39	31	39

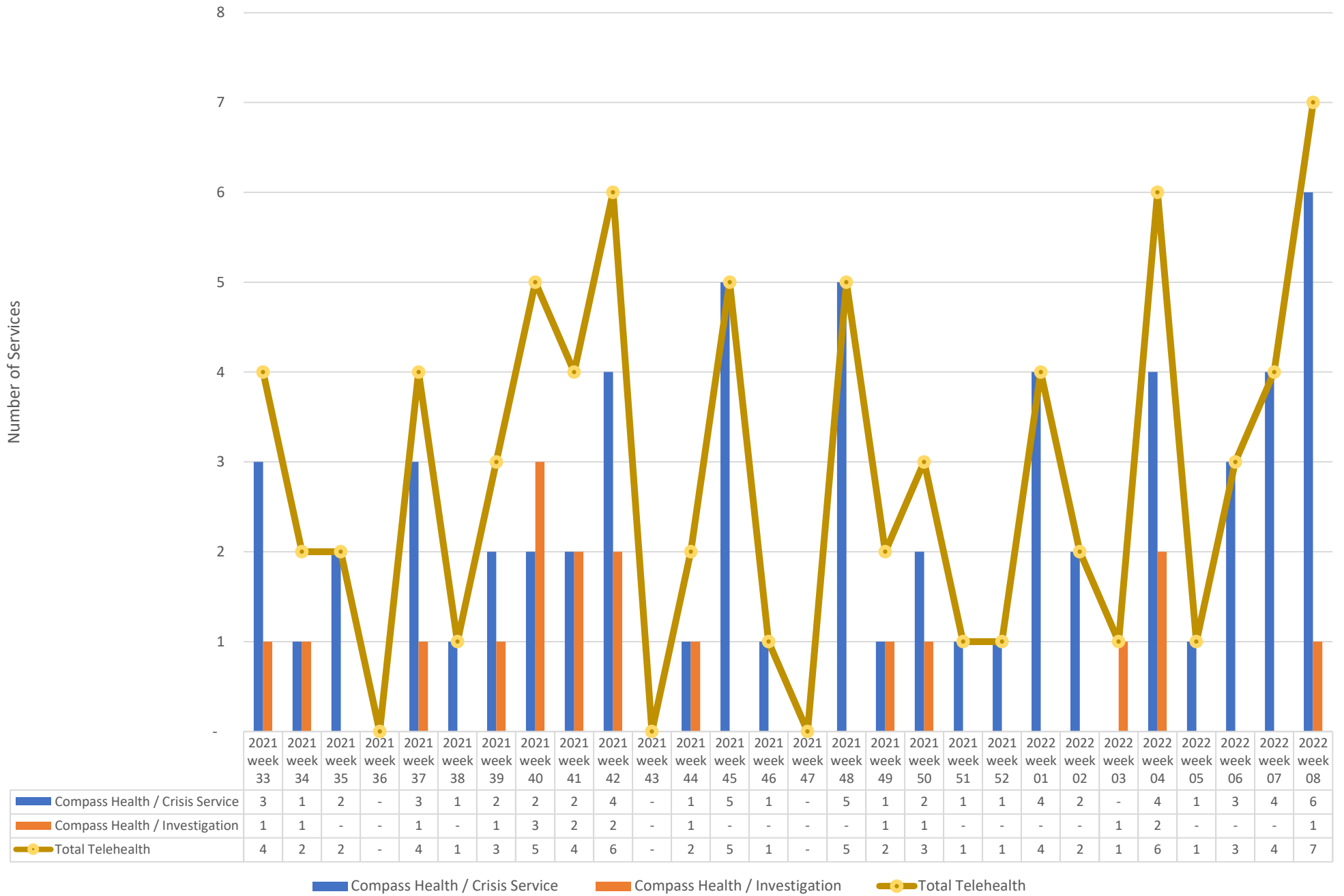
Weekly Staff Count - Staff providing Crisis or Investigation services 08/08/21 to 02/19/22



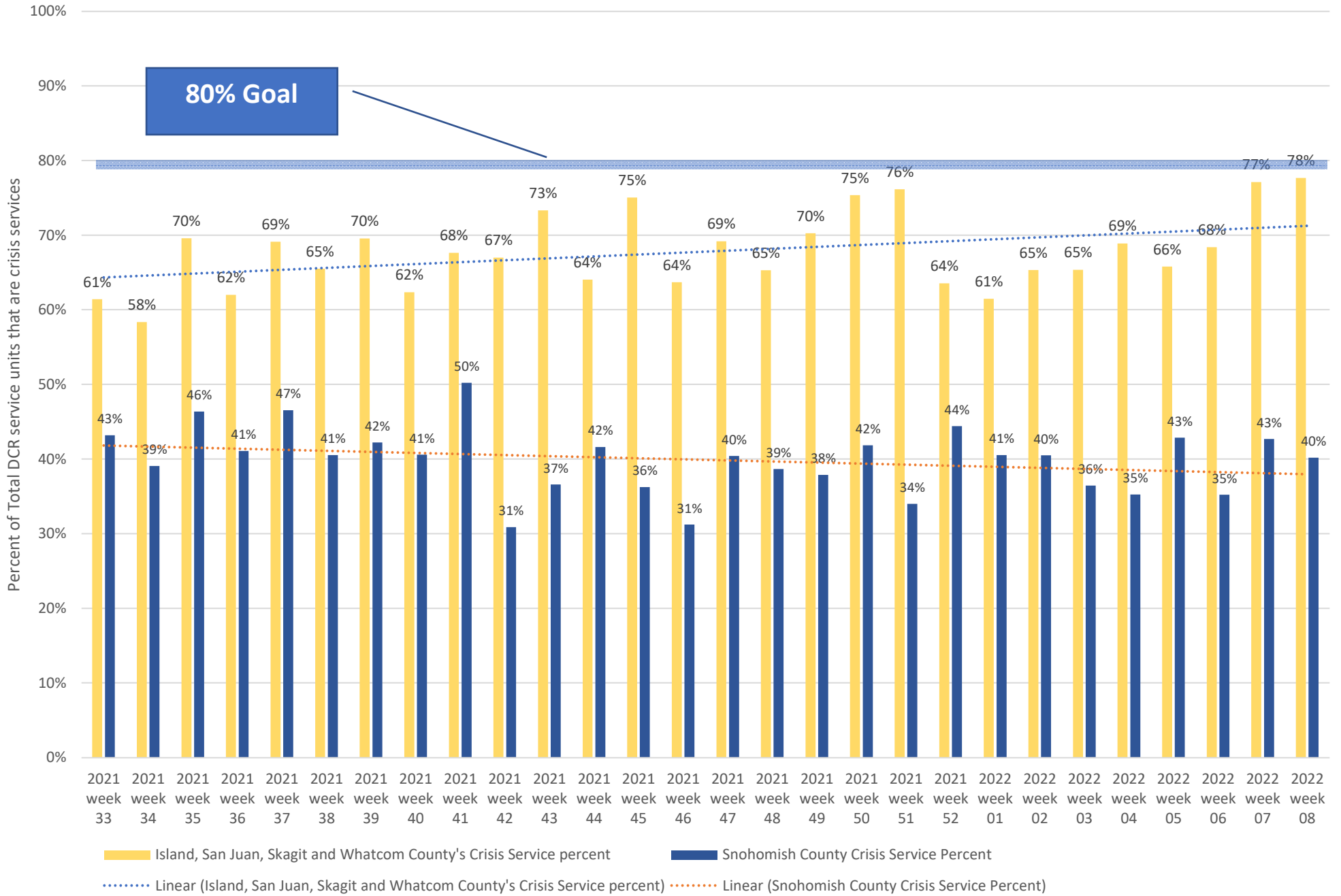
Hospital placement locations (Invol and Vol) - No adjustment has been made for timely data - recent weeks likely low



Telehealth only, crisis and investigation services from 08/08/21 to 02/19/22



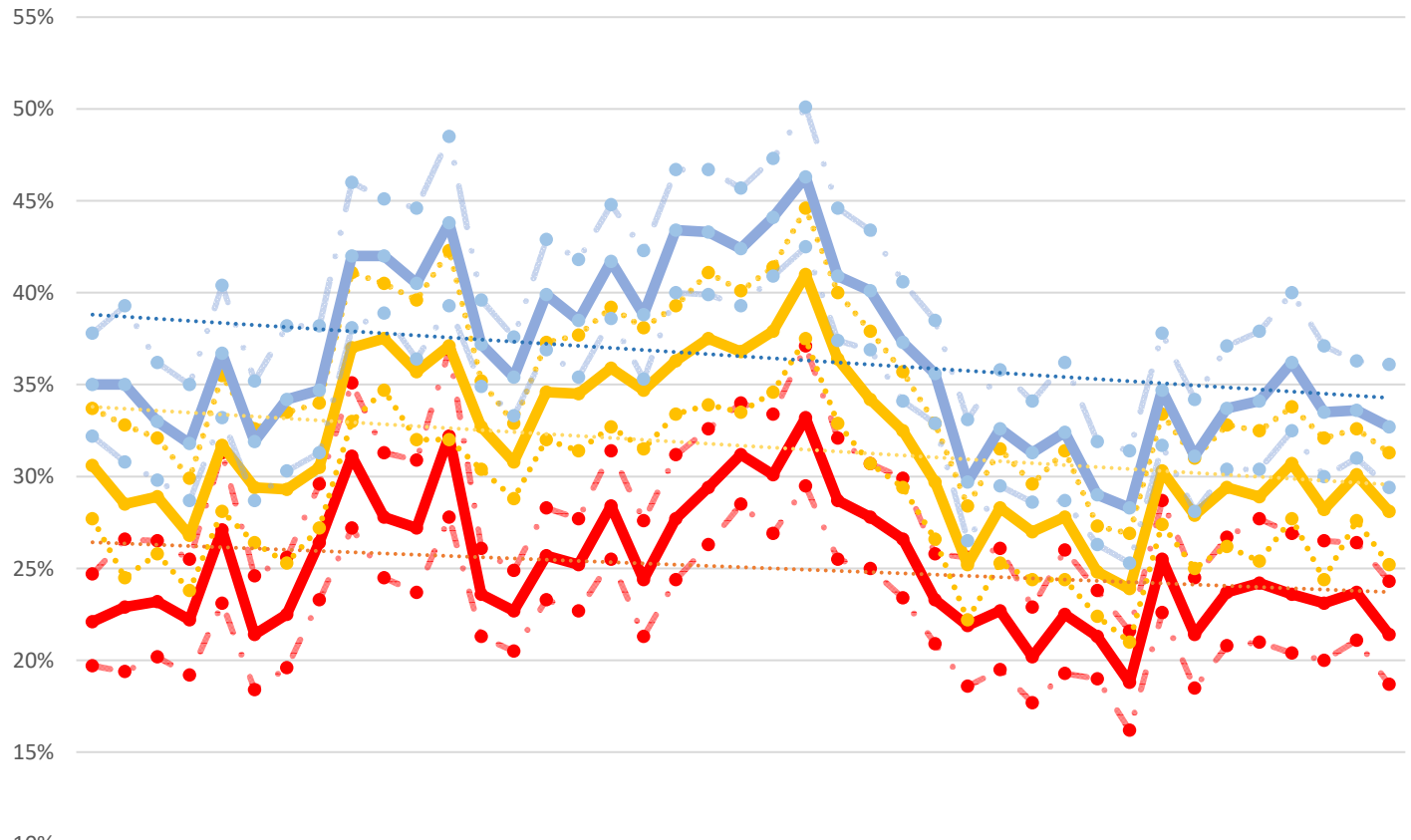
Crisis Service Unit Percent - Crisis Service units divided by Crisis units + Investigation units



Washington State Indicators of Anxiety or Depression Based on Reported Frequency of Symptoms During Last 7 Days

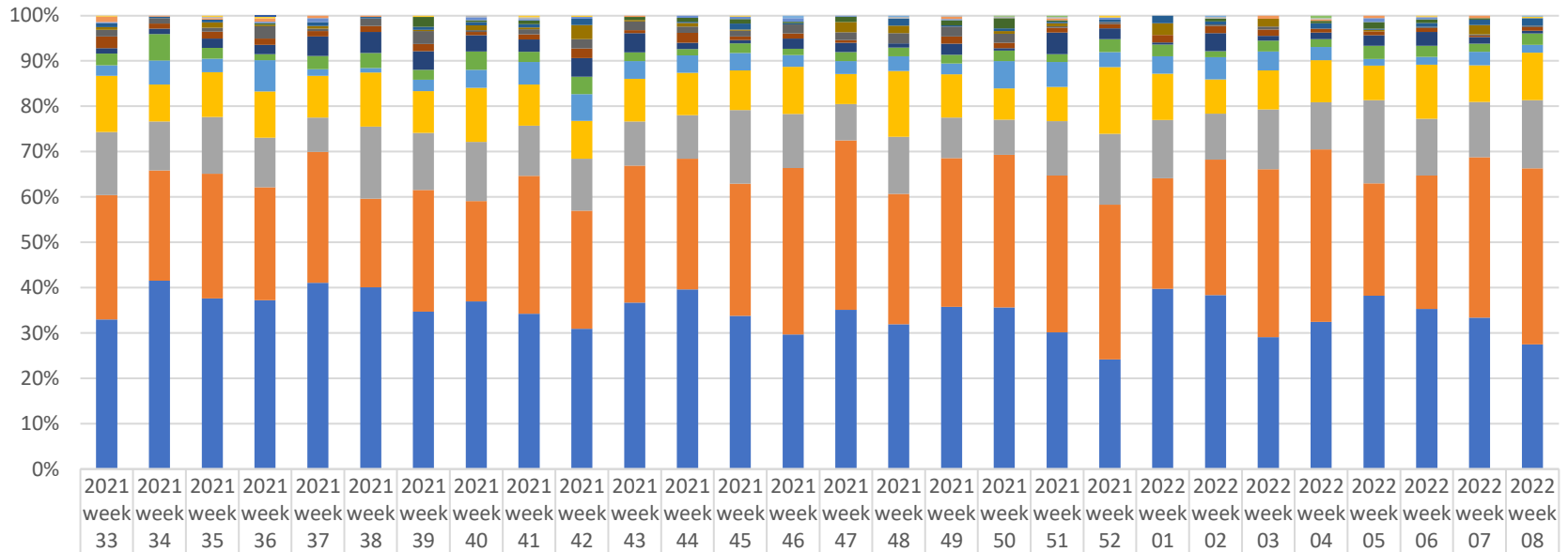
Wkh# IV#F#hqv#v#E#x#u#d#x#/#q#
 fr#o#e#r#u#d#w#r#q#z# l#k#l#y#h#h#g#h#u#d#
 d#j#h#q#f#l#h#v#/#o#x#q#f#k#h#g#k#h#k#r#x#v#h#k#r#q#
 S#x#o#h#/#x#u#y#h#|#r#s#u#r#g#x#f#h#j#d#w#d#r#q#k#h#
 v#r#f#l#d#d#q#g#h#r#f#r#q#r#p# l#f#p# s#d#f#w#r#i#F#r#y#l#0
 4<#r#q#d#p# h#u#l#f#d#q#k#r#x#v#h#k#r#q#v#l#W#k#h#
 K#r#x#v#h#k#r#q#S#x#o#h#/#x#u#y#h#|#d#v#j#h#v#l#j#q#h#g#
 w#r#j#d#x#j#h#k#h#p# s#d#f#w#r#i#k#h#s#d#q#g#h#p# l#f#
 r#q#h#p# s#r#p# h#q#w#d#w#v#/#r#q#v#x#p# h#u#
 v#s#h#q#g#l#j#/#r#r#g#h#f#x#u#w#|#k#r#x#v#l#j#/#
 h#g#x#f#d#w#r#q#j#l#u#x#s#w#i#r#q#v#d#q#g#
 g#l#p# h#q#v#l#r#q#v#r#i#s#k#|v#f#d#d#l#q#g#p# h#q#w#d#
 z#h#o#j#h#v#v#i

<https://data.cdc.gov/NCHS/Indicators-of-Anxiety-or-Depression-Based-on-Repor/8pt5-q6wp>



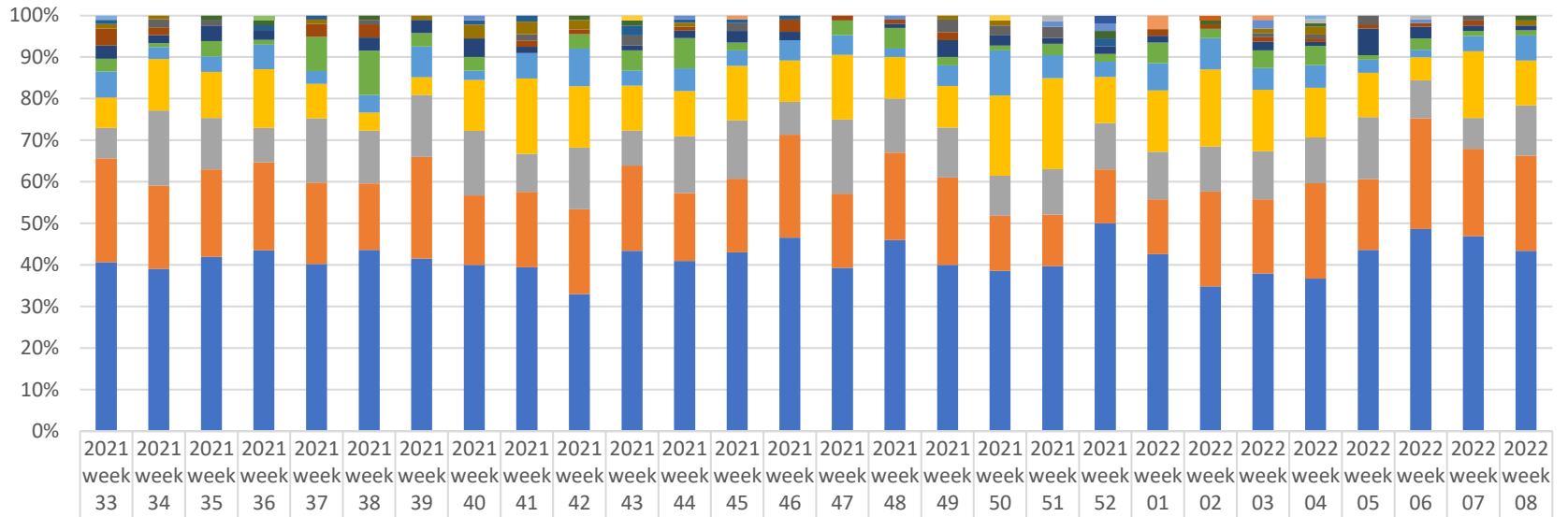
	23 Apr -05	07 May	14 May	21 May	28 May -02	04 Jun	11 Jun	18 Jun	25 Jun	02 Jul	09 Jul	16 Jul	19 Aug	02 Sep	16 Sep	30 Sep	14 Oct	28 Oct	11 Nov	25 Nov	09 Dec	06 Jan	20 Jan	03 Feb	17 Feb -01	03 Mar	17 Mar	14 Apr	28 Apr -10	12 May	26 May -07	09 Jun	23 Jun	21 Jul	04 Aug	18 Aug	01 Sep	15 Sep	29 Sep	01 Oct	29 Dec	29 Dec -10
• with Symptoms of Depressive Disorder low conf. level	20%	19%	20%	19%	23%	18%	20%	23%	27%	25%	24%	28%	21%	21%	23%	23%	26%	21%	24%	26%	29%	27%	30%	26%	25%	23%	21%	19%	20%	18%	19%	19%	16%	23%	19%	21%	21%	20%	20%	21%	19%	
— with Symptoms of Depressive Disorder value	22%	23%	23%	22%	27%	21%	23%	26%	31%	28%	27%	32%	24%	23%	26%	25%	28%	24%	28%	29%	31%	30%	33%	29%	28%	27%	23%	22%	23%	20%	23%	21%	19%	26%	21%	24%	24%	24%	23%	24%	21%	
• with Symptoms of Depressive Disorder high conf. level	25%	27%	27%	26%	31%	25%	26%	30%	35%	31%	31%	37%	26%	25%	28%	28%	31%	28%	31%	33%	34%	33%	37%	32%	31%	30%	26%	26%	26%	23%	26%	24%	22%	29%	25%	27%	28%	27%	27%	26%	24%	
• with Symptoms of Anxiety Disorder low conf. level	28%	25%	26%	24%	28%	26%	25%	27%	33%	35%	32%	32%	30%	29%	32%	31%	33%	32%	33%	34%	34%	35%	38%	33%	31%	29%	27%	22%	25%	24%	24%	22%	21%	27%	25%	26%	25%	28%	24%	28%	25%	
— with Symptoms of Anxiety Disorder value	31%	29%	29%	27%	32%	29%	29%	31%	37%	38%	36%	37%	33%	31%	35%	35%	36%	35%	36%	38%	37%	38%	41%	36%	34%	33%	30%	25%	28%	27%	28%	25%	24%	30%	28%	29%	29%	31%	28%	30%	28%	
• with Symptoms of Anxiety Disorder high conf. level	34%	33%	32%	30%	36%	33%	34%	34%	41%	41%	40%	42%	35%	33%	37%	38%	39%	38%	39%	41%	40%	41%	45%	40%	38%	36%	33%	28%	32%	30%	31%	27%	27%	33%	31%	33%	33%	34%	32%	33%	31%	
• with Symptoms of Anxiety or Depressive Disorder low conf. level	32%	31%	30%	29%	33%	29%	30%	31%	38%	39%	36%	39%	35%	33%	37%	35%	39%	35%	40%	40%	39%	41%	43%	37%	37%	34%	33%	27%	30%	29%	29%	26%	25%	32%	28%	30%	30%	33%	30%	31%	29%	
— with Symptoms of Anxiety or Depressive Disorder value	35%	35%	33%	32%	37%	32%	34%	35%	42%	42%	41%	44%	37%	35%	40%	39%	42%	39%	43%	43%	42%	44%	46%	41%	40%	37%	36%	30%	33%	31%	32%	29%	28%	35%	31%	34%	34%	36%	34%	34%	33%	
• with Symptoms of Anxiety or Depressive Disorder high conf. level	38%	39%	36%	35%	40%	35%	38%	38%	46%	45%	45%	49%	40%	38%	43%	42%	45%	42%	47%	47%	46%	47%	50%	45%	43%	41%	39%	33%	36%	34%	36%	32%	31%	38%	34%	37%	38%	40%	37%	36%	36%	

Place of Service -Crisis Services, percent of total by week



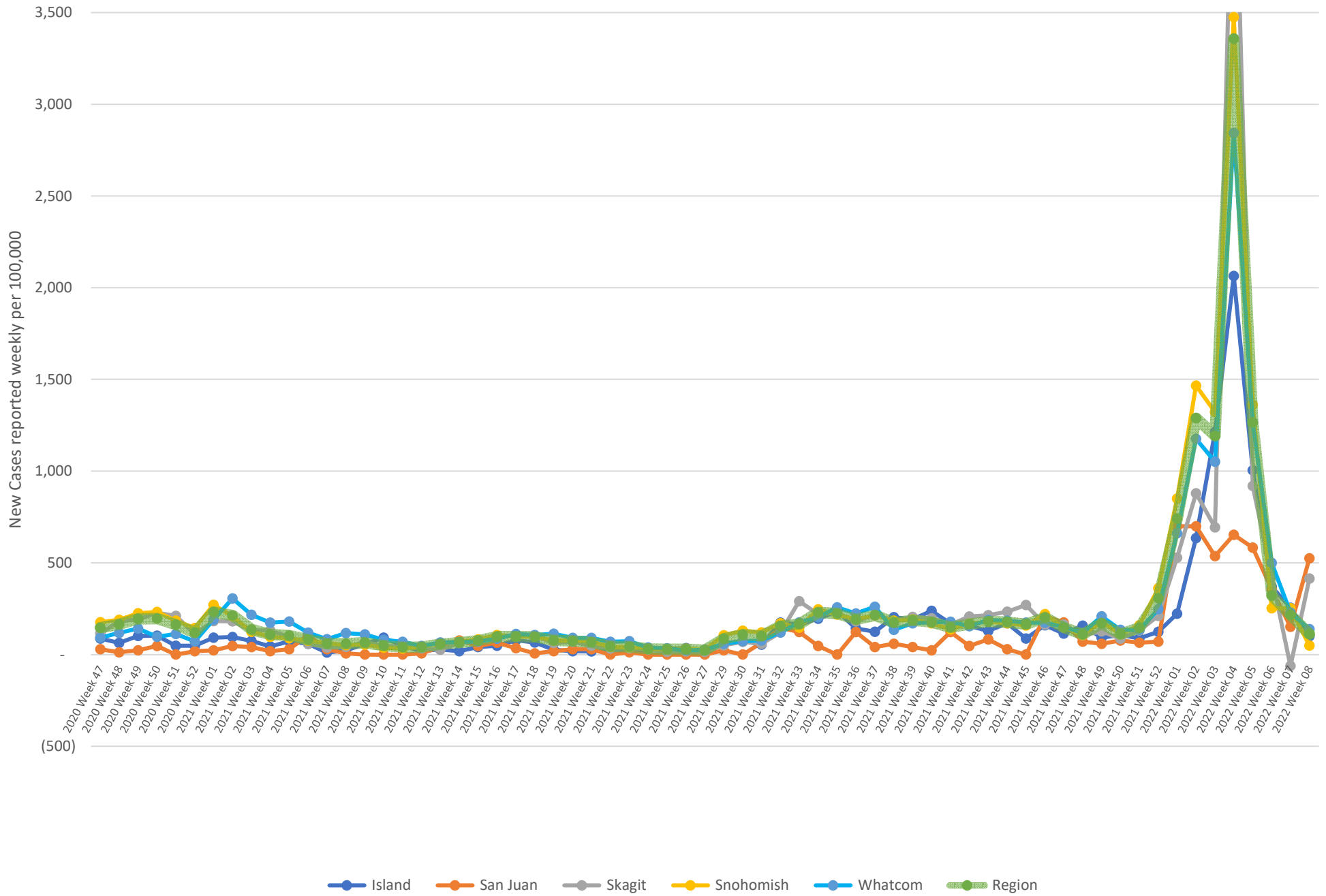
	2021 week 33	2021 week 34	2021 week 35	2021 week 36	2021 week 37	2021 week 38	2021 week 39	2021 week 40	2021 week 41	2021 week 42	2021 week 43	2021 week 44	2021 week 45	2021 week 46	2021 week 47	2021 week 48	2021 week 49	2021 week 50	2021 week 51	2021 week 52	2022 week 01	2022 week 02	2022 week 03	2022 week 04	2022 week 05	2022 week 06	2022 week 07	2022 week 08
Psych. Fac.-Partial Hosp				1																								
Custodial Care Facility																		1	1					2				
Nursing Facility														2		1						1						1
Community Mental Health Center	1		1	1			1		1	1			1							1							1	1
Skilled Nursing Facility			1					1	1							1	1	1	1			1		1		1		
Group Home	4	1	1	2	2	1					1					2			1				2	1	2		2	
Psych. Residential	1			1	3			2	1	1		2	2	3	1		1			1					3	1		
School				1			7	1	2		2	3	4	1	4		4	8	1			2		2	5	3	1	
Telehealth	3	1	2		3	1	2	2	2	4		1	5	1		5	1	2	1	1	4	2		4	1	3	4	6
Homeless Shelter	2		4	1	2		1	3	1	9	1	3	1		8	5		2	2		6		5		1		7	
On Campus Outpatient Hospital	5	4	3	8	2	5	9	1	3	6	6	5	5	7	6	7	8	7	1	1		1	2			1	1	1
Inpatient Hospital	9	4	5	4	4	4	5	2	3	6	2	8	3	4	2		6	4	3	2	4	5	4	3	3	3	1	3
Assisted Living Facility	4	4	7	6	15	14	13	10	7	12	13	5	3	8	7	3	9	2	14	5	1	12	3	5	8	11	5	2
Inpatient Psychiatric Facility	9	20	8	4	10	10	7	11	6	11	6	5	8	5	7	6	7	8	5	6	6	4	7	6	10	9	6	9
Prison Correctional Facility	8	18	10	20	5	3	8	11	13	17	12	14	15	9	10	10	9	21	16	7	9	15	12	10	5	6	10	6
Emergency Room Hospital	43	28	33	30	32	36	29	33	24	24	29	34	34	37	23	45	35	24	22	31	24	23	25	32	26	43	27	37
Home	48	37	42	32	26	48	40	36	29	33	30	35	63	42	28	39	33	27	35	33	30	31	38	36	63	45	41	53
Other Place of Service	95	83	92	73	100	59	85	61	80	75	93	105	113	130	130	89	121	117	101	72	57	91	107	131	85	106	119	137
Office	114	142	126	109	142	121	110	102	90	89	113	144	131	105	122	99	132	124	88	51	93	117	84	112	131	127	112	97

Place of Service -Investigations, percent of total by week

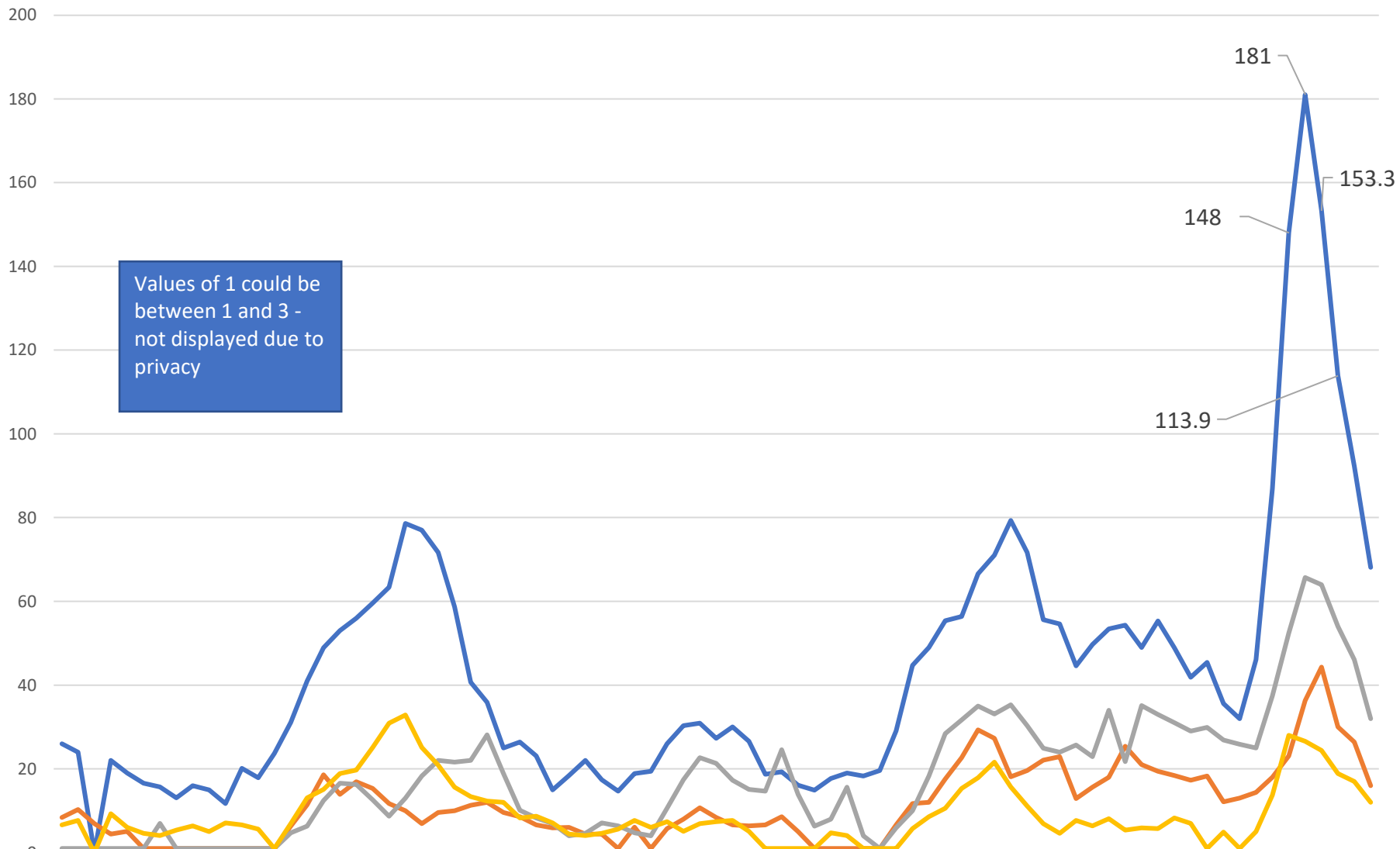


	2021 week 33	2021 week 34	2021 week 35	2021 week 36	2021 week 37	2021 week 38	2021 week 39	2021 week 40	2021 week 41	2021 week 42	2021 week 43	2021 week 44	2021 week 45	2021 week 46	2021 week 47	2021 week 48	2021 week 49	2021 week 50	2021 week 51	2021 week 52	2022 week 01	2022 week 02	2022 week 03	2022 week 04	2022 week 05	2022 week 06	2022 week 07	2022 week 08	
Nursing Facility																						1							
Residential SUD																					1								
Psych. Fac.-Partial Hosp				1																									
Custodial Care Facility	1																							1					
School											1								1										
Skilled Nursing Facility																				1				1		1			
Homeless Shelter														1								2		1					
On Campus Outpatient Hospital								1				1				1				1	1			2			1		
Community Mental Health Center			1	1		1				1	1										1		1		1			1	
Psych. Residential	1			1	1			1	1		2	1	1	1							1								
Telehealth	1	1			1		1	3	2	2		1					1	1						1	2			1	
Group Home		2	1			1			1		2		2				3	2	2					1	1	2		1	
Assisted Living Facility	4	2			3	3			1	1		1		3	1	1	2					1	1	1	1	1	1	1	
Home	3	2	3	2		3	3	4	1		1	2	3	2		1	4	2	1	1	1		2	1	6	3	1	1	
Office	3	1	3	1	8	10	3	3		3	4	8	2		3	5	2	1	2	1	3	2	4	5	1	3	1	1	
Inpatient Hospital	6	3	3	5	3	4	7	2	4	8	3	6	4	5	4	2	5	9	4	2	4	7	5	6	3	2	3	5	
Prison Correctional Facility	7	13	9	12	8	4	4	11	12	13	9	12	14	10	13	10	10	16	16	6	9	17	14	13	10	6	13	9	
Inpatient Psychiatric Facility	7	19	10	7	15	12	14	14	6	13	7	15	15	8	15	13	12	8	8	6	7	10	11	12	14	10	6	10	
Other Place of Service	24	21	17	18	19	15	23	15	12	18	17	18	19	25	15	21	21	11	9	7	8	21	17	25	16	29	17	19	
Emergency Room Hospital	39	41	34	37	39	41	39	36	26	29	36	45	46	47	33	46	40	32	29	27	26	32	36	40	41	53	38	36	

New COVID-19 Cases Reported Weekly per 100,000 population - 11/17/20 to 02/23/22



Total Hospitalized Adults - COVID-19 (confirmed or suspected) 7 day average



Values of 1 could be between 1 and 3 - not displayed due to privacy

	7/31/20	8/7/20	8/14/20	8/21/20	8/28/20	9/4/20	9/11/20	9/18/20	9/25/20	10/2/20	10/9/20	10/16/20	10/23/20	10/30/20	11/6/20	11/13/20	11/20/20	11/27/20	12/4/20	12/11/20	12/18/20	12/25/20	1/1/21	1/8/21	1/15/21	1/22/21	1/29/21	2/5/21	2/12/21	2/19/21	2/26/21	3/5/21	3/12/21	3/19/21	3/26/21	4/2/21	4/9/21	4/16/21	4/23/21	4/30/21	5/7/21	5/14/21	5/21/21	5/28/21	6/4/21	6/11/21	6/18/21	6/25/21	7/2/21	7/9/21	7/16/21	7/23/21	7/30/21	8/6/21	8/13/21	8/20/21	8/27/21	9/3/21	9/10/21	9/17/21	9/24/21	10/1/21	10/8/21	10/15/21	10/22/21	10/29/21	11/5/21	11/12/21	11/19/21	11/26/21	12/3/21	12/10/21	12/17/21	12/24/21	1/7/22	1/14/22	1/21/22	1/28/22	2/4/22	2/11/22	2/18/22	2/25/22	
Prov. Everett	26	24	0	22	19	17	16	13	16	15	12	20	18	24	31	41	49	53	56	60	63	79	77	72	59	41	36	25	26	23	15	18	22	17	15	19	19	26	30	31	27	30	27	19	19	16	15	18	19	18	20	29	45	49	55	56	67	71	79	72	56	55	45	50	53	54	49	55	49	42	45	36	32	46	87	14	18	23	36	44	30	26	16
SVH	8	10	7	4	5	1	1	1	1	1	1	1	1	1	6	11	19	14	17	15	12	10	7	10	10	11	12	10	9	7	6	6	4	4	1	6	1	6	8	11	8	7	6	7	9	5	1	1	1	1	7	12	12	18	23	29	27	18	20	22	23	13	16	18	25	21	19	18	17	18	12	13	14	18	23	36	44	30	26	16			
ST Joe	1	1	1	1	1	1	1	1	1	1	1	1	1	1	5	6	12	17	16	13	9	13	18	22	22	22	28	19	10	8	7	4	5	7	6	5	4	11	17	23	21	17	15	15	25	14	6	8	16	4	1	6	10	18	28	32	35	33	35	30	25	24	26	23	34	22	35	33	31	29	30	27	26	25	37	52	66	64	54	46	32		
Swedish Edmonds	7	8	0	9	6	5	4	5	6	5	7	7	6	1	7	13	15	19	20	25	31	33	25	21	16	13	12	12	8	9	7	4	4	5	6	8	6	7	5	7	7	8	5	1	1	1	1	1	5	4	1	1	1	6	9	11	15	18	22	16	11	7	5	8	6	8	5	6	6	8	7	1	5	1	5	14	28	27	24	19	17	12	

