



North Sound Behavioral Health Advisory Board

Agenda

October 5, 2021

1:00 p.m. – 3:00 p.m.

Call to Order and Introductions

Revisions to the Agenda

Approval of September Minutes

Announcements

- Advisory Board Resignation

Brief Comments or Questions from the Public

Executive/Finance Committee Report

Executive Director's Report

- Substance Use Disorder Regional Navigator Program: James Dixon

Executive Director's Action Items

Old Business

- Ad Hoc Committee - Update

New Business

- 2022 Chair and Vice Chair Nominations Open
- 2021 Winter Celebration
- 2022 Pre-Meeting Training Topics
- Formation of Ad Hoc Committee – Peer Recruitment

Report from Advisory Board Members

Reminder of Next Meeting

Adjourn



North Sound Behavioral Health Advisory Board

September 7, 2021

1:00 – 3:00

Meeting Minutes

Empowering individuals and families to improve their health and well-being

Members Present on Phone Zoom Meeting Platform:

- Island County: Candy Trautman
- San Juan: Diana Porter
- Skagit County: Duncan West, Patti Bannister, Jere LaFollete, Ron Coakley
- Snohomish County: Marie Jubie, Pat O’Maley-Lanphear, Jennifer Yuen, Fred Plappert, Michelle Meaker
- Whatcom County: Arlene Feld, Kara Mitchell, Alan Friedlob, Mark McDonald

Members Excused:

- Island County: Chris Garden
- San Juan County:
- Skagit County:
- Snohomish County: Joan Bethel, Jack Eckrem
- Whatcom County:

Members Absent:

- Island County:
- San Juan County:
- Skagit County:
- Snohomish County:
- Whatcom County:

North Sound BH-ASO Staff: Joe Valentine, Margaret Rojas, James Dixon, Maria Arreola (Recording).

Managed Care Organization Representation:

- United Healthcare: Stacey Lopez
- Coordinated Care:
- Molina Healthcare: Kelly Anderson
- Community Health Plan of Washington [CHPW]: Marci Bloomquist

Guests:

Pre-Meeting Training

Non pre-meeting month

Call to order and Introductions

The meeting was called to order by Chair West at 1:03 p.m.

Revisions to the Agenda

No revisions mentioned

Approval of August Minutes

Motion made for the approval of August meeting minutes with written with the correction of conference statements. Motion seconded; Motion carried.

Announcements

None

Brief Comments from the Public

None

Executive Directors Report

Joe reported on

- COVID Federal Block Grant Plan
- Workforce Shortages Update
- Crisis Services
- Recovery Navigation Program
- Continuing Impact of BH 1310 on Law Enforcement Response
- Substance Use Recovery Services Advisory Committee
- Community Behavioral Residential Assistance Program (CBRA)
- FY 2021-2022 GF-S/Proviso Spending Plan

Executive Director's Action Items

Joe presented the Action Items that will be presented to the Board of Directors.

Motion made to approve the Action Items to be forwarded to the Board of Directors for approval.

Motion seconded, All in favor, Motion carried.

— **Mental Health Block Grant and Substance Abuse Block Grant**

Margaret and Joe provided an overview of the budget allocations for treatment programs.

Ad Hoc Committee Duncan, Michele, and Alan met with Margaret and Joe to provide feedback of a more meaningful way of presenting the results to the Board.

Motion made to accept the Mental Health Block Grant and the Substance Abuse Block Grant Plans. Motion seconded. All in Favor. Motion Carried.

Members requested to have more funds be allocated to Peer Support Services. It was suggested to form an Ad Hoc Committee to provide feedback of ways to support, recruit and retain Peers in the North Sound region. Maria will coordinate the Ad Hoc Committee in October.

Executive/Finance Committee Report

The August Expenditures were reviewed and discussed. Motion to move the Expenditures to the Board of Directors for approval. Motion seconded. All in Favor. Motion Carried.

Budget Ad Hoc Committee Pat, Duncan, and Michele met on August 25th. Committee will bring back proposals during the October meeting.

North Sound Regional Ombuds Semi-Annual Report

Lizeth Vizcaino-Sandoval, Ombuds Specialist provided the report which covered

- Complaint Breakdowns
- Agency
- Complaint Categories
- Service Type
- Insurance Type
- Payer for Service

Trends that were being seen were an increase in outpatient wait times, complaints of accessing services due to high wait times and communication barriers regarding coordination of care.

Old Business

Advisory Board Request for Staff Support

Revised policy was introduced during the August meeting. Policy revision reflects the Board process requests for ASO staff. Motion to approve the revised policy 4501.00 and 4501.00. Motion seconded. All in Favor. Motion Carried.

Snohomish County Membership Vote – Michele Meaker

Michele has attended a prior Advisory Board meeting to see if the Board would be a good fit. Snohomish county is in full support of her appointment. Michele requested to move forward with her official vote on the Board. Motion was made to approve Michele’s membership for Snohomish County seat on the North Sound Behavioral Health Advisory Board, Motion seconded, Motion carried.

Maria will set up a new member orientation with Michele.

New Business

2021 Washington Co-Occurring Disorders Treatment Conference

Conference will be held virtually on October 4-5. Members interested in attending are to notify Maria. Maria will coordinate registrations.

Update on Advisory Board In Person Meetings

In person meetings will continue to not take place, due to the rise in COVID cases. Members will be further updated as the COVID cases continued to be monitored.

Report from Advisory Board Members

Duncan reported on the schools are starting at the same time the rental assistance moratorium is ending. Skagit county has low vacancy rentals and is leading the rates in COVID cases.

Chris reported on the barriers law enforcement is having due to the new legislation.

Arlene spoke of the Incarceration Reduction Task Force working on a brief needs list in Whatcom county. The task force will be making recommendations of four topics areas which include funding for behavioral health, workforce support, pretrial and reentry support and transitional housing.

Reminder of Next Meeting

Tuesday, October 5th, 2021

Adjourn

Chair West adjourned the meeting at 2:53 p.m.

**North Sound Behavioral Health Administrative Services Organization
Advisory Board Budget
September 2021**

	Total	All Conferences	Board Development	Advisory Board Expenses	Stakeholder Transportation	Legislative Session
		Project # 1	Project # 2	Project # 3	Project # 4	Project # 5
Budget	\$ 20,000.00	\$ 9,900.00	\$ 1,000.00	\$ 9,000.00		\$ 100.00
Expense	0.00					
Under / (Over) Budget	\$ 20,000.00	\$ 9,900.00	\$ 1,000.00	\$ 9,000.00	\$ -	\$ 100.00



All expenses to attend Conferences	Advisory Board Retreat/Summit	Costs for Board Members (meals mileage, misc.)	Non- Advisory Board Members, to attend meetings and special events	Shuttle, meals, hotel, travel
------------------------------------	-------------------------------	--	--	-------------------------------

For Ratification

- Health Care Authority (HCA) is amending the Peer Pathfinder Contract with the ASO to include funding of \$12,727 for a new deliverable in the payment and performance chart, the deliverable is due on August 1, 2022. The amendment extends the contract for a new end date of August 1, 2022.

Motion #XX-XX

HCA-NS BH-ASO-K4864-Amendment 1 for the provision of funding for a new deliverable and extending the end date from September 30, 2021, to August 1, 2022.

For Approval

- Lifeline Connection is the provider for Peer Pathfinder services in Skagit and Whatcom counties. This amendment is passing through the funding of \$12,727 and requirement for a new deliverable due August 1, 2022. This contract includes the HARPS program as a companion to the Peer Pathfinder program.

Motion #XX-XX

NS BH-ASO-Lifeline Connections-MHBG-20 Amendment 2 for the provision of additional funding and the requirement of a new deliverable due August 1, 2022. The contract term is November 1, 2020, through June 30, 2022, with an automatic one-year renewal on July 1, 2022, based on continued compliance with the terms of the contract.

2021 Pre-Meetings, Site Visits, Conferences and Legislative Visits

Date	Pre-Meeting Topics	Note
January		
February		
March	Tribal Crisis Protocol Coordination	Lucy and Archelle - HCA
April	No Pre-Meeting	
May	Crisis Response and Stabilization - Compass Health	Amy Pereira
June	No Pre-Meeting	
July	<i>Summer Recess - No Pre-Meeting</i>	
August	SUD Regional Navigator Program	James Dixon
September	No Pre-Meeting	
October	Hospitalizations/WSH	JR Bigelow
November	Island County Opioid Outreach Program	
December	Holiday Potluck - TBD	
	PPW - Evergreen Recovery	
	Tribal 7.01	
	Tribal Behavioral Health	
	MAT - PDOA	
	MCO Board Representation Update	
	BH-ASO Crisis System Update	
	Board of Directors - Elected Officials	
	Snohomish County Opioid Outreach Program	
Date	Site Visits	Note
TBD	Smokey Point Behavioral Health	
TBD	Pioneer Center North	
TBD	Tri-County Crisis Stabilization Facility - Oak Harbor	
	Skagit Detox Center	
TBD	Mukilteo Evaluation and Treatment Center - Remodel	
	Brigid Collins Skagit or Whatcom Locations	
Date	Advocacy	Note
Date	Conferences	Location
June	WA Behavioral Healthcare Conference	
October	WA State Co-Occuring Disorders and Treatment Conference	

1. OCTOBER SUPPLEMENTAL BUDGET ALLOCATIONS

- We have received an “off-cycle” amendment from Health Care Authority [HCA] that adds in some of the additional new allocations that were authorized this year. These include:
 - **Recovery Navigator Program:** \$2,619,377
 - **Additional Crisis Teams, including Child Crisis Teams:** \$ 2,496,794
 - **Additional monetary requirements for persons on Less Restrictive Orders:** \$40,000
 - **Whatcom County Crisis Stabilization Pilot:** \$300,000
 - **Whatcom County School Support Pilot:** \$200,000
 - **Mental Health Block Grant [MHBG] COVID Co-Responder Funds:** \$100,000
 - **MHBG COVID Peer Bridger Participant Service Funds** \$11,109
 - **MHBG COVID Addition of Certified Peer Counselor to BHASO Mobile Crisis Teams:** \$190,900
- Although these allocations are to cover the July, 2021-June, 2022 Fiscal Year, HCA recognizes that we not realistically be able to contract out and spend down all of these funds by the end of June, 2022. They will allow us to submit proposals to carry over unspent funds to the next fiscal year.
- We have received from HCA the reporting templates for the two Whatcom County Provisos. We’ll be meeting with Whatcom County and the provider organizations that will be involved in providing the proviso funded services to develop the scopes of work.
- **Attachment #1** lists all of our non-Medicaid allocations and brief definitions of each category.

2. UPDATE ON WORKFORCE DEVELOPMENT ACTIVITIES

- We have distributed a survey to Behavioral Health Agencies [Attachment #2], asking them to prioritize a list of **specific** areas where Administrative Service Organization [ASO] or Managed Care Organization [MCO] contributions could assist the state-wide efforts. HCA has formed a “Sprint Team” to roll out a set of state-wide strategies aimed at workforce recruitment and retention.
- The MCO/ASO Clinical Coordination Workgroup has formed a sub-group to work on the same question, i.e., where we as funders can assist. I have agreed to facilitate this group.

3. COVID FEDERAL BLOCK GRANT

- We have submitted the COVID Block Grant plan approved by the Advisory Board to HCA.
- Our next step is to identify where proposed funding can be added to existing contracts or where we will need to solicit proposals where new programs would be required.

4. CRISIS SERVICES

- a. **Weekly Crisis Capacity Indicator Report** – through September 25 [attachment #2]

- Both the number of calls to the Crisis Line and the number of dispatches of mobile crisis outreach teams remain at historically high levels, but have leveled off in the last few weeks.
- b. **North Sound Crisis System Dashboard-through August, 2021** [attachment #3]
 - The North Sound Crisis System Dashboard displays an unduplicated number of persons receiving crisis services by county.
 - The trend line for both calls and dispatches continued to climb through August.

5. CONTINUING IMPACT OF HB 1310 ON LAW ENFORCEMENT ASSISTANCE WITH BEHAVIORAL HEALTH CRISIS SERVICES

- Law Enforcement agencies continue to be concerned about how to interpret the restrictions on use of force in responding to a behavioral health crisis established by HB 1310.
- Our Designated Crisis Responder [DCR] teams have been documenting situations in which law enforcement either declined to assist or to more actively engage and/or transport a person in crisis.
- ASOs are providing this documentation to HCA who in turn are providing the information to the Governor's Office and Attorney General's office.
- Both Crisis Service and Law Enforcement agencies are hoping that there can be clearer guidance from the Attorney General's office as well as additional legislative clarification.

6. RECOVERY NAVIGATOR PROGRAM

- The North Sound BH-ASO has submitted its initial plan to HCA on how we propose to implement the Recovery Navigator program.
- The allocation for the North Sound region is **\$2,619,377**. This allocation is intended to cover the cost of 2 outreach recovery navigators per county, project managers, supervisors, and some support costs such as transportation.
- Our proposed plan would build on the existing LEAD programs in Snohomish and Whatcom counties but would also ensure that outreach navigator services are available in all 5 counties.
- James Dixon, the North Sound Recovery Program Regional Coordinator will provide an update at the Advisory Board meeting.

7. COMMUNITY BEHAVIORAL RESIDENTIAL ASSISTANCE PROGRAM [CBRA]

- We have received 6 responses to our Request for Letters of Interest to provide long term rental assistance services using the new funding available through the Department of Commerce [DOC] Community Behavioral Residential Assistance Program.
- The Department of Commerce [DOC] has allocated **\$1,308,750** to the North Sound region for long term housing assistance.
- We have interviewed all 6 respondents and are trying to develop a plan that will allow all interested organization to access the rental assistance funds in some way.

8. NEW NORTH SOUND EVALUATION & TREATMENT FACILITY

- Skagit County has announced that Telecare has been awarded the contract to operate the new North Sound Evaluation & Treatment Facility in Sedro Wooley. This facility will replace the current facility Telecare is operating on the grounds of the North Cascades Gateway Center [old Northern State Hospital].
- Telecare anticipates that they will be able to move in by March of 2022 and will be seeking assistance with move in and start-up costs.

9. ANNUAL HCA [TEAMONITOR] REVIEW

- HCA conducted its annual “TeaMonitor” review of the North Sound BH-ASO on September 28.
- This review was probably our most successful one yet. Of the 86 areas assessed, only 4 were considered as “Partially Met” and 2 as “Not Met”. However, the findings were mostly technical: either some of our documents contained the wrong contract section reference or did not provide as much explanation and HCA would like.
- All of these findings can be easily addressed. Our “corrective action” responses are due to HCA by November 17.

**Exhibit A-3: Non-Medicaid Funding Allocation
North Sound BH-ASO**

This Exhibit addresses Non-Medicaid funds in the North Sound RSA for the provision of crisis services and non-crisis behavioral health services for July 1, 2021 through December 31, 2021, of state fiscal year (SFY) 2022.

MHBG and SABG funds will be administered by the BH-ASO in accordance with the plans developed locally for each grant. Bock grant funding is shown for the full SFY 2022, and spending in July-December 2021 is also counted out of these totals.

Table 1: North Sound RSA July-December 2021 (SFY22) GF-S Funding

Fund Source	Monthly	Total 6 Months
Flexible GF-S	\$1,117,711.00	\$6,706,266.00
PACT	\$23,166.00	\$138,996.00
Assisted Outpatient Tx	\$19,737.00	\$118,422.00
1109 PACT	\$19,477.00	\$116,862.00
Flexible GF-S (ASO)- Begin FY2021- Proviso (7B)	\$55,385.00	\$332,310.00
Jail Services	\$30,628.00	\$183,768.00
ITA - Non-Medicaid funding	\$22,865.00	\$137,190.00
Detention Decision Review	\$8,958.00	\$53,748.00
Long-Term Civil Commitment Court Costs	\$402.00	\$2,412.00
Trueblood Misdemeanor Diversion	\$18,662.00	\$111,972.00
Island County Crisis Stabilization	\$0.00	\$0.00
Juvenile Drug Court	\$11,650.00	\$69,900.00
DMA	\$48,441.00	\$290,646.00
Secure Detox	\$28,913.00	\$173,478.00
Behavioral Health Advisory Board	\$3,333.00	\$19,998.00
Ombuds	\$3,750.00	\$22,500.00
Discharge Planners	One-Time payment (Six months)	\$53,647.00
BH Service Enhancements	One-Time payment (Six months)	\$389,594.00
5092(65) Added Crisis Teams/including child crisis teams	One-Time payment (Annual)	\$2,496,794.00
5073-ASO monitoring CR/LRA	One-Time payment (Annual)	\$40,000.00
Blake Navigator Program	One-Time payment (Annual)	\$2,619,377.00
Whatcom County Crisis Stabliz (\$300K) & Schools Support (\$200K)	One-Time payment (Annual)	\$500,000.00
Blake 5476 Lead Admin	One-Time payment (Annual)	\$140,000.00
Total	\$1,413,078.00	\$14,717,880.00

Table 2: North Sound RSA FY 2022 Grant Funding (12 months)

Fund Source	Total FY2022
MHBG (Full Year SFY2022)	\$1,111,032
Peer Bridger (Full Year SFY2022)	\$240,000
FYSPRT (Full Year SFY2022)	\$75,000
SABG (Full Year SFY2022)	\$3,289,438
Total	\$4,715,470

Table 3: North Sound RSA Covid Grant Funding (Utilization until March 2023)

Fund Source	Total FY2022
MHBG Covid (BH-ASO) Peer Pathfinders Transition from Incarceration Pilot	\$71,000
MHBG Covid (BH-ASO) Treatment -Crisis Services	\$227,109
MHBH Covid MH Services non-Medicaid services & individuals	\$1,037,744
MHBG Covid Co-Responder funds	\$100,000
MHBG Covid - Peer Bridger Participant Service Funds	\$11,109
MHBG Covid - Addition of Certified Peer Counselor to BHASO Mobile Crisis Response Teams	\$190,900
SABG Covid BH-ASO Treatment Funding	\$2,186,014
SABG Covid Peer Pathfinders Transition from Incarceration Pilot	\$71,000
Total	\$3,894,876

Table 4: North Sound RSA - Funds available Statewide to bill up to - Full FY 2022 amount

Fund Source	Total FY2022
5071 - Full FY amount available Provider cost of monitoring CR/LRA State Hospital discharged individual	\$69,000

Explanations

All proviso dollars are GF-S funds. Outlined below, are explanations of the provisos and dedicated accounts applicable **to all regions that receive the specific proviso:**

- **Juvenile Drug Court:** Funding to provide alcohol and drug treatment services to juvenile offenders who are under the supervision of a juvenile drug court.
- **State Drug Court:** Funding to provide alcohol and drug treatment services to offenders who are under the supervision of a drug court.
- **Jail Services:** Funding to provide mental health services for mentally ill offenders while confined in a county or city jail. These services are intended to facilitate access to programs that offer mental health service upon mentally ill offenders' release from confinement. This includes efforts to expedite applications for new or re- instated Medicaid benefits.
- **WA - Program for Assertive Community Treatment (WA - PACT)/Additional PACT:** Funds received per the budget proviso for development and initial operation of high-intensity programs for active community treatment WA- PACT teams.
- **1109 PACT Startup:** Funding to ensure the productive startup of services while maintaining fidelity to the PACT model. These funds are provided for provider startup expenses.
- **Detention Decision Review:** Funds that support the cost of reviewing a DCR's decision whether to detain or not detain an individual under the State's involuntary commitment statutes.
- **Criminal Justice Treatment Account (CJTA):** Funds received, through a designated account in the State treasury, for expenditure on: a) SUD treatment and treatment support services for offenders with an addition of a SUD that, if not treated, would result in addiction, against whom charges are filed by a prosecuting attorney in Washington State; b) the provision of drug and alcohol treatment services and treatment support services for nonviolent offenders within a drug court program.
- **CJTA Therapeutic Drug Court:** Funding to set up of new therapeutic courts for cities or counties or for the expansion of services being provided to an already existing therapeutic court that engages in evidence-based practices, to include medication assisted treatment in jail settings pursuant to RCW 71.24.580.
- **Assisted Outpatient Treatment:** Funds received to support Assisted Outpatient Treatment (AOT). AOT is an order for Less Restrictive Alternative Treatment for up to ninety days from the date of judgment and does not include inpatient treatment.
- **Dedicated Marijuana Account (DMA):** Funding to provide a) outpatient and residential SUD treatment for youth and children; b) PPW case management, housing supports and residential treatment program; c) contracts for specialized fetal alcohol services; d) youth drug courts; and e) programs that support intervention, treatment, and recovery support services for middle school and high school aged students. All new program services must direct at least eighty-five percent of funding to evidence-based on research-based programs and practices.
- **ITA Non-Medicaid – Mobile Crisis (5480 Proviso):** Funding that began in 2013, to provide additional local mental health services to reduce the need for hospitalization under the Involuntary Treatment Act in accordance with regional plans approved by DBHR.

- **Secure Detoxification:** Funding for implementation of new requirements of RCW 71.05, RCW 71.34 and RCW 71.24 effective April 1, 2018, such as evaluation and treatment by a SUDP, acute and subacute detoxification services, and discharge assistance provided by a SUDP in accordance with this Contract.
- **Crisis Triage/Stabilization and Step-Down Transitional Residential:** Funding originally allocated under SSB 5883 2017, Section 204(e) and Section 204(r) for operational costs and services provided within these facilities.
- **Behavioral Health Enhancements (one-time payment):** Funding for the implementation of regional enhancement plans originally funded under ESSB 6032 and continued in ESHB 1109.SL Section 215(23).
- **Discharge Planners (one-time payment):** These are funds received for a position solely responsible for discharge planning.
- **Trueblood Misdemeanor Diversion Funds:** These are funds for non-Medicaid costs associated with serving individuals in crisis triage, outpatient restoration, Forensic PATH, Forensic HARPS, or other programs that divert individuals with behavioral health disorders from the criminal justice system.
- **Ombuds:** Specific General Fund allocation to support a regional ombuds.
- **Behavioral Health Advisory Board (BHAB):** Specific General Fund allocation to support a regional BHAB.

Outlined below are explanation for provisos applicable to specific regions:

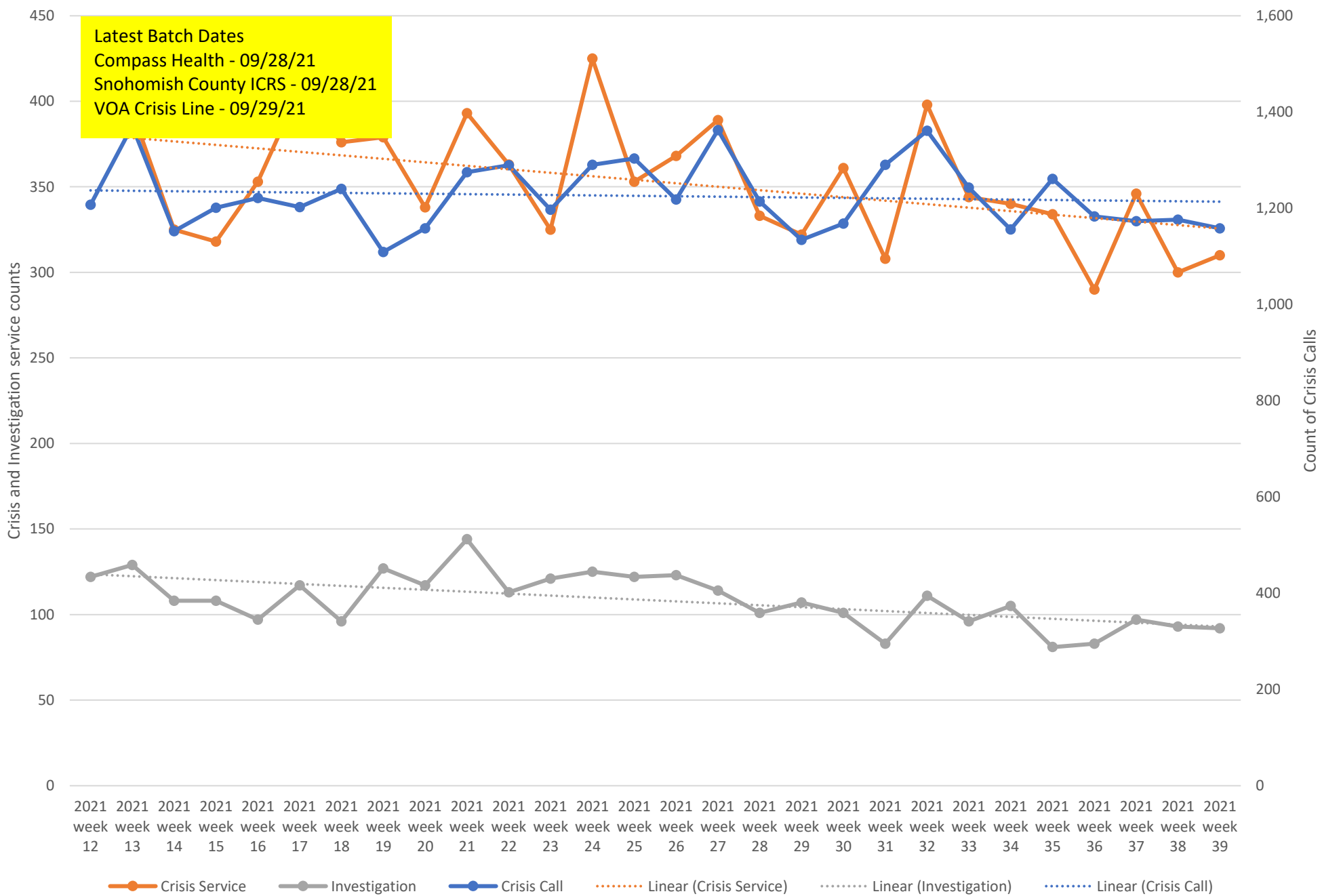
- **ITA 180 Day Commitment Hearings:** Funding to conduct 180 day commitment hearings.
- **Assisted Outpatient Treatment (AOT) Pilot:** Funding for pilot programs in Pierce and Yakima counties to implement AOT.
- **Spokane: Acute Care Diversion:** Funding to implement services to reduce the utilization and census at Eastern State Hospital.
- **MH Enhancement – Mt Carmel (Alliance):** Funding for the Alliance E&T in Stevens County.
- **MH Enhancement-Telecare:** Funding for the Telecare E&T in King County.
- **Long-Term Civil Commitment Beds:** This funding is for court costs and transportation costs related to the provision of long-term inpatient care beds as defined in RCW 71.24.025 through community hospitals or freestanding evaluation and treatment centers.



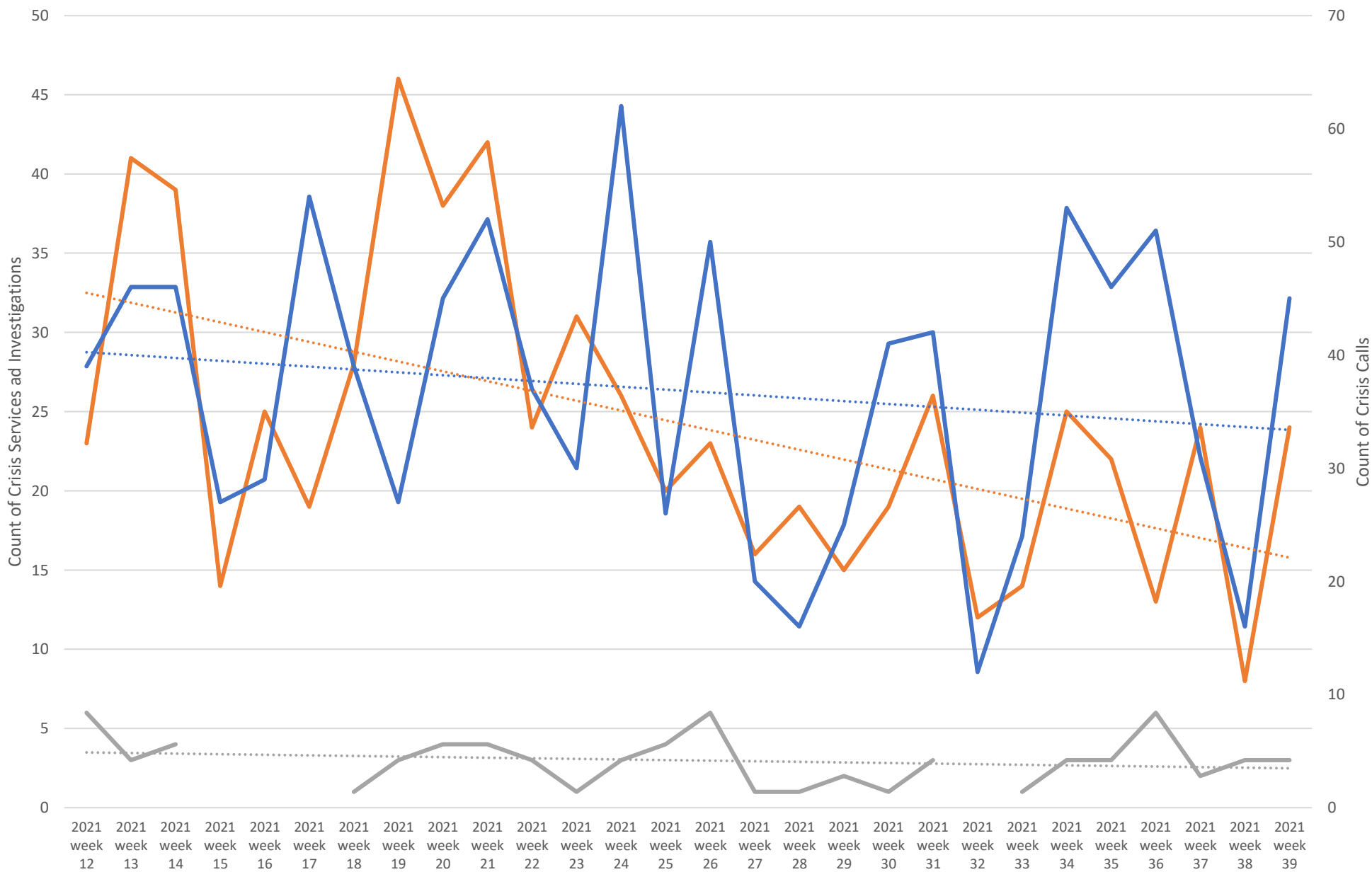
Weekly Crisis Capacity Indicator Snapshot

Page 2	Crisis Data - dates 03/14/21 to 09/25/21
Page 3	Crisis Data: Ages 0-17 - dates 03/14/21 to 09/25/21
Page 4	All DCR Dispatches - dates 03/14/21 to 09/25/21
Page 5	Weekly Staff Count - Staff providing Crisis or Investigation services 03/14/21 to 09/25/21
Page 6	Average dispatch time for Emergent investigations from 03/14/21 to 09/25/21
Page 7	Hospital placement locations (Invol and Vol) - No adjustment has been made for timely data - recent weeks likely low
Page 8	Telehealth only, crisis and investigation services from 03/14/21 to 09/25/21
Page 9	Crisis Service Unit Percent - Crisis Service units divided by Crisis units + Investigation units
Page 10	Washington State Indicators of Anxiety or Depression Based on Reported Frequency of Symptoms During Last 7 Days
Page 11	Place of Service -Crisis Services, percent of total by week
Page 12	Place of Service -Investigations, percent of total by week
Page 13	New COVID-19 Cases Reported Weekly per 100,000 population - 12/15/20 to 09/29/21
Page 14	Total Hospitalized Adults - COVID-19 (confirmed or suspected) 7 day average

Crisis Data - dates 03/14/21 to 09/25/21

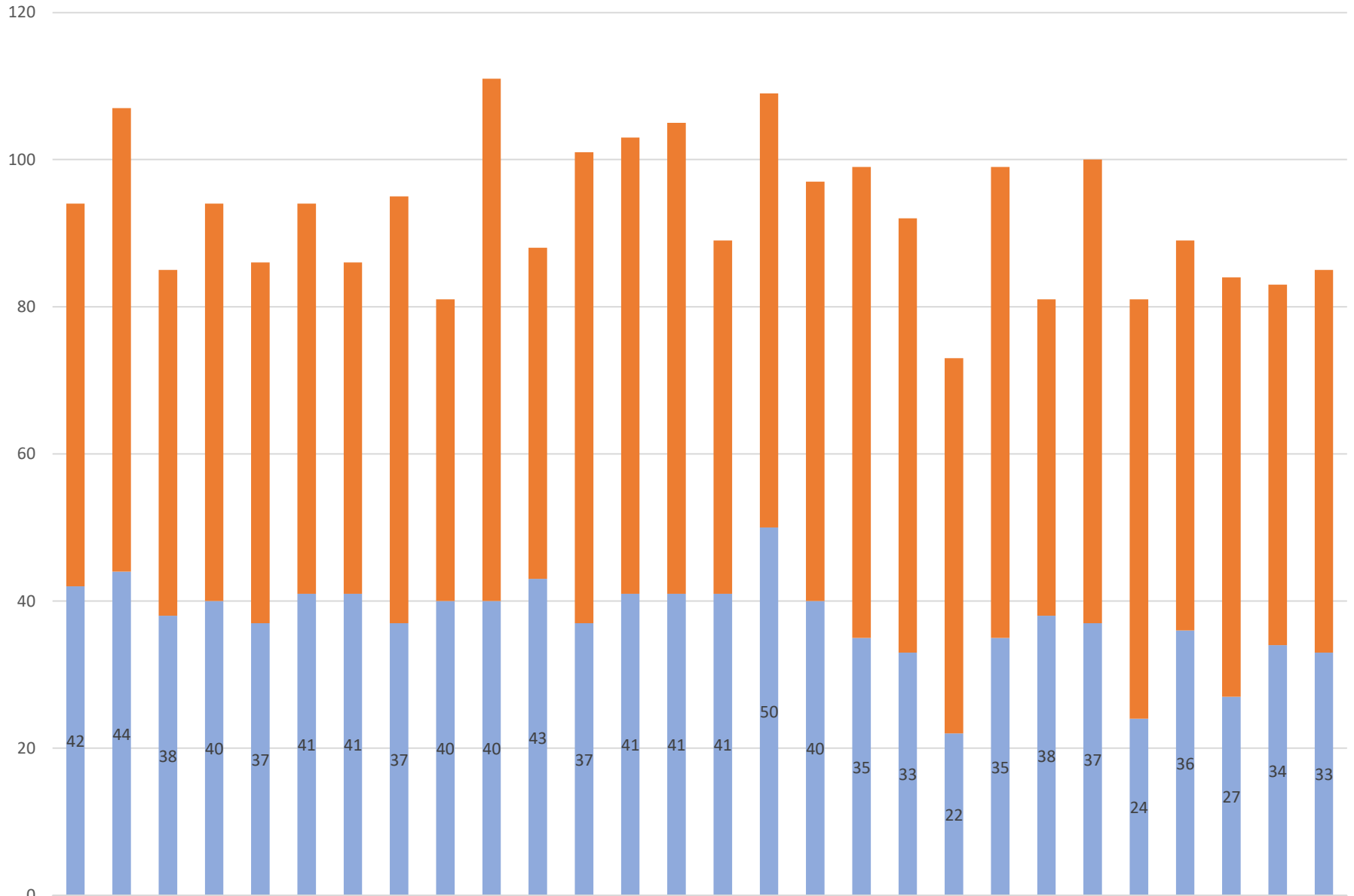


Crisis Data: Ages 0-17 - dates 03/14/21 to 09/25/21



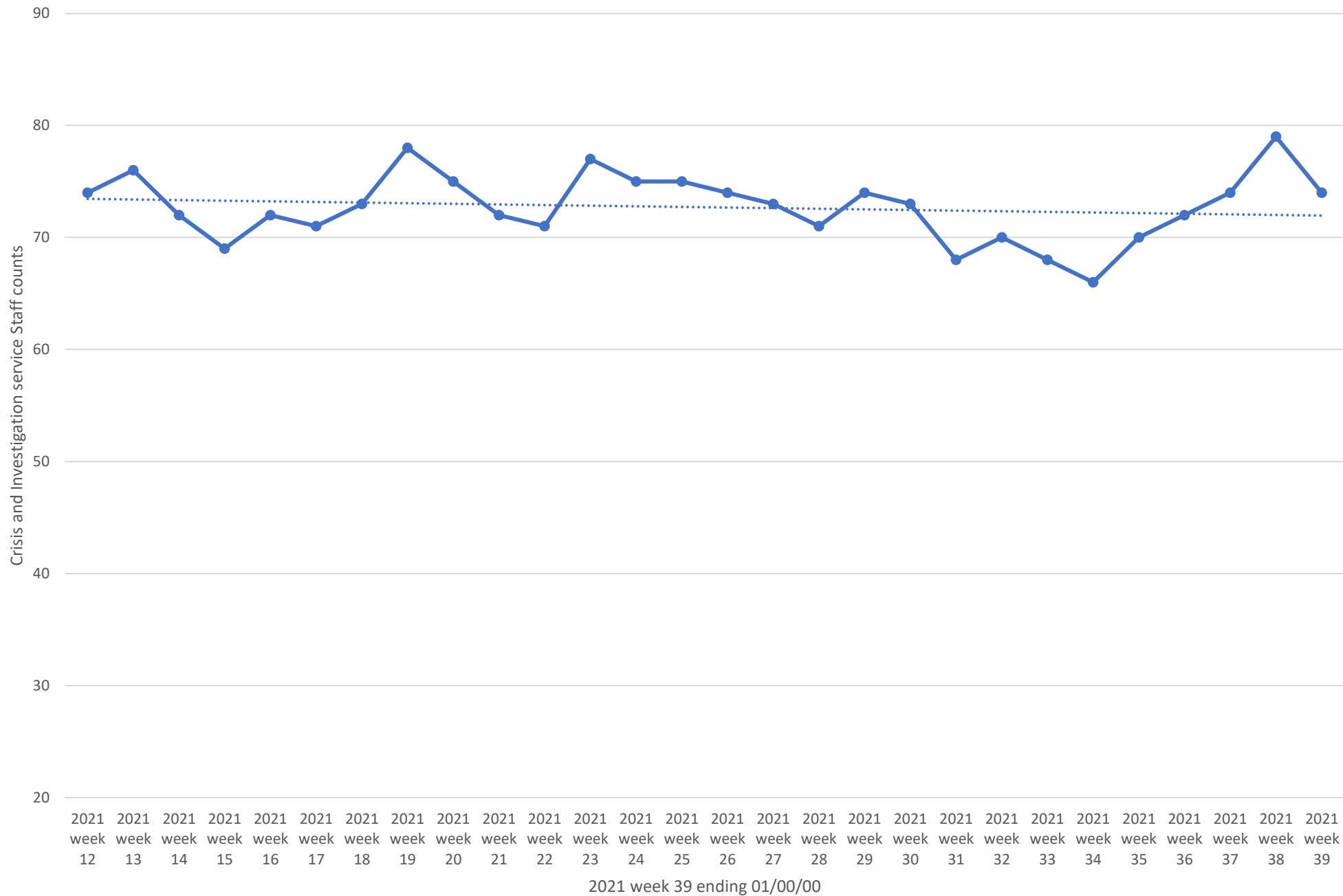
— Crisis Service
 — Investigation
 — Crisis Call
 ⋯ Linear (Crisis Service)
 ⋯ Linear (Investigation)
 ⋯ Linear (Crisis Call)

All DCR Dispatches - dates 03/14/21 to 09/25/21



■ dispatch resulting in other outcome	52	63	47	54	49	53	45	58	41	71	45	64	62	64	48	59	57	64	59	51	64	43	63	57	53	57	49	52
■ dispatch resulting in detention	42	44	38	40	37	41	41	37	40	40	43	37	41	41	41	50	40	35	33	22	35	38	37	24	36	27	34	33

Weekly Staff Count - Staff providing Crisis or Investigation services 03/14/21 to 09/25/21

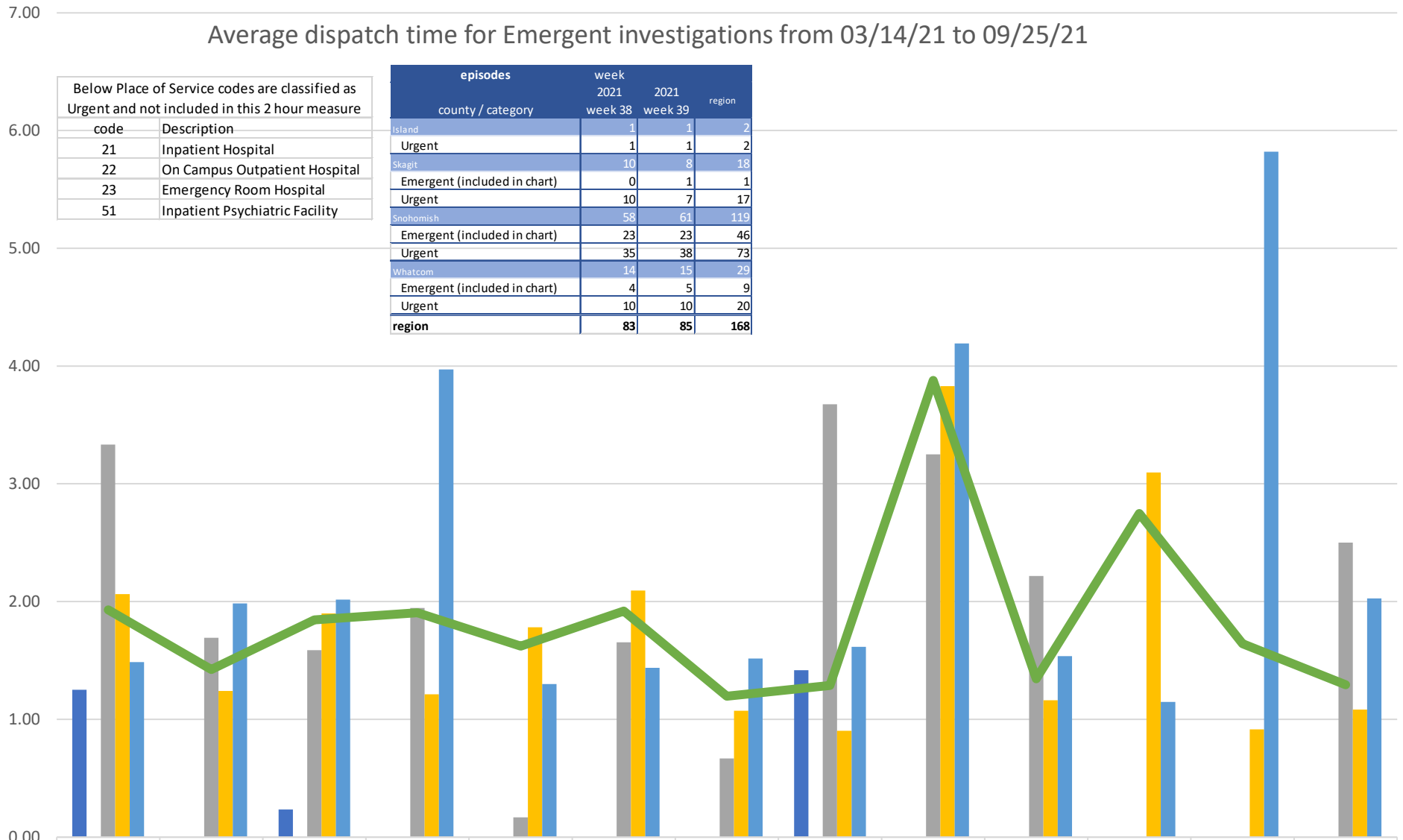


Average dispatch time for Emergent investigations from 03/14/21 to 09/25/21

Below Place of Service codes are classified as Urgent and not included in this 2 hour measure	
code	Description
21	Inpatient Hospital
22	On Campus Outpatient Hospital
23	Emergency Room Hospital
51	Inpatient Psychiatric Facility

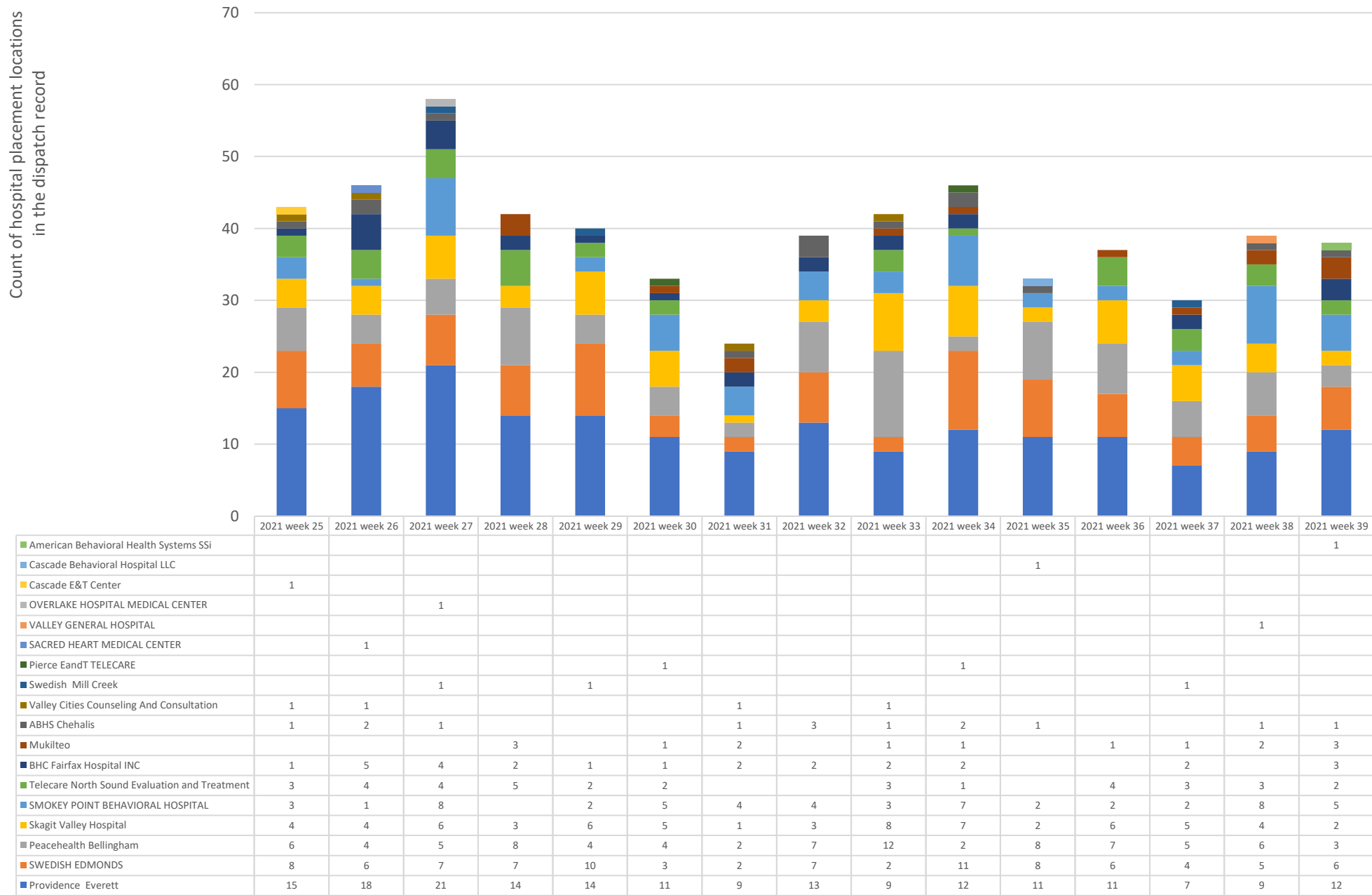
episodes county / category	week 2021		region
	week 38	week 39	
Island	1	1	2
Urgent	1	1	2
Skagit	10	8	18
Emergent (included in chart)	0	1	1
Urgent	10	7	17
Snohomish	58	61	119
Emergent (included in chart)	23	23	46
Urgent	35	38	73
Whatcom	14	15	29
Emergent (included in chart)	4	5	9
Urgent	10	10	20
region	83	85	168

Hours from dispatch to DCR arrival

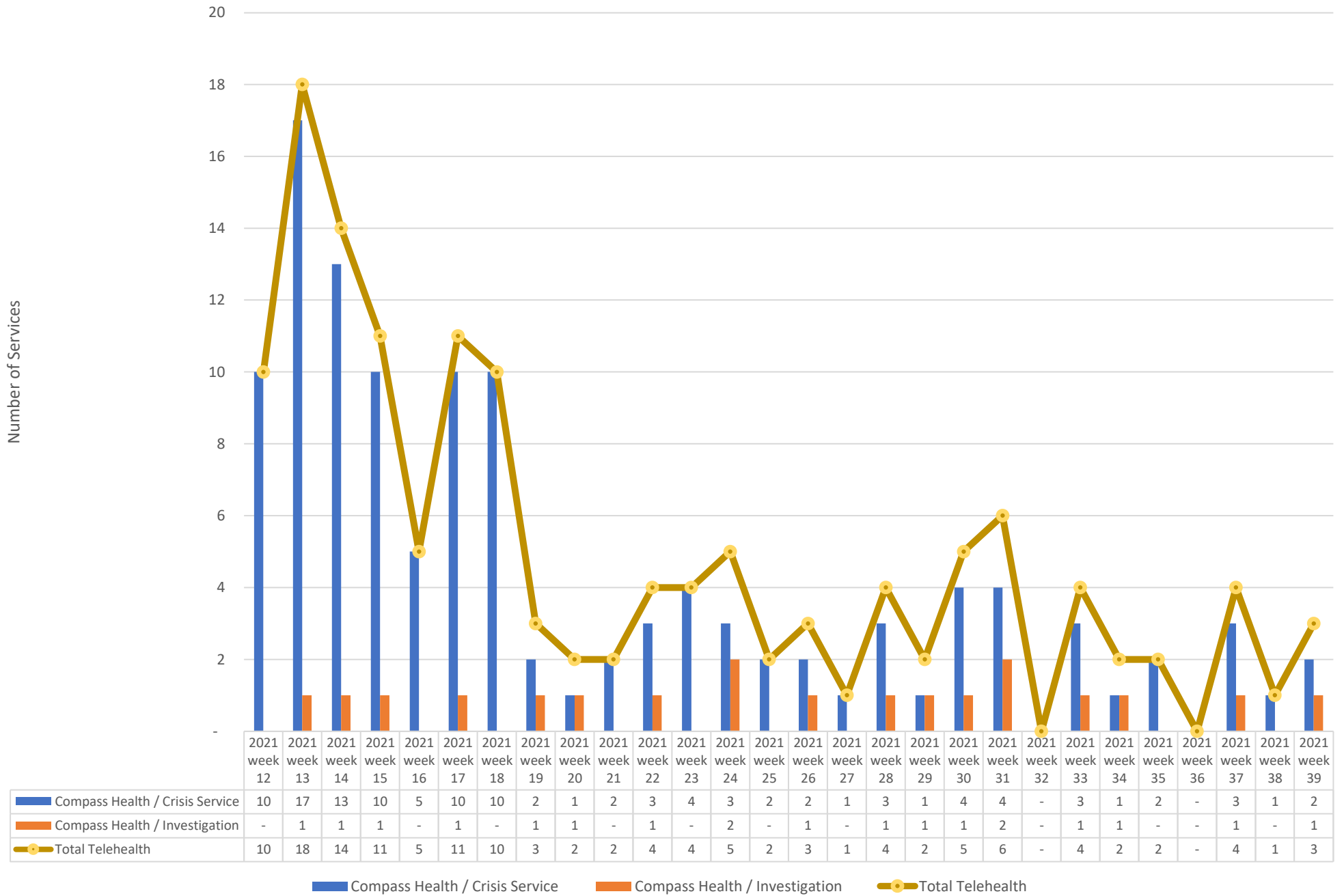


	2021 week 27	2021 week 28	2021 week 29	2021 week 30	2021 week 31	2021 week 32	2021 week 33	2021 week 34	2021 week 35	2021 week 36	2021 week 37	2021 week 38	2021 week 39
Island	1.25	0.00	0.23	0.00	0.00	0.00	0.00	1.42	0.00	0.00	0.00	0.00	0.00
San Juan	0.00	0.00	0.00	0.00	0.00	0.00	0.00	0.00	0.00	0.00	0.00	0.00	0.00
Skagit	3.33	1.69	1.59	1.94	0.17	1.65	0.67	3.67	3.25	2.22	0.00	0.00	2.50
Snohomish	2.06	1.24	1.90	1.21	1.78	2.09	1.07	0.90	3.83	1.16	3.10	0.91	1.08
Whatcom	1.49	1.98	2.02	3.97	1.30	1.44	1.52	1.61	4.19	1.54	1.15	5.82	2.03
region	1.93	1.42	1.84	1.90	1.62	1.92	1.20	1.29	3.88	1.34	2.75	1.64	1.29

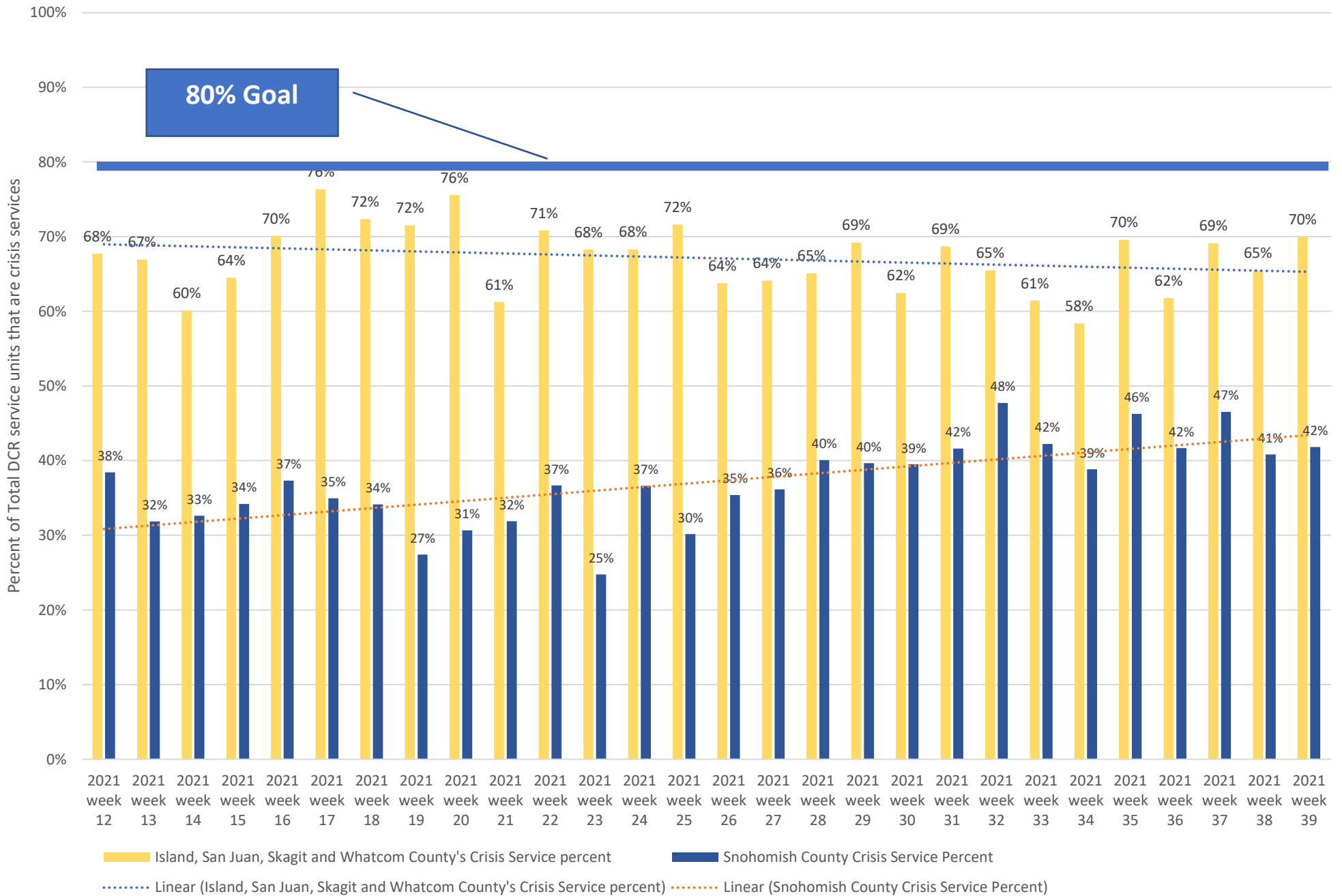
Hospital placement locations (Invol and Vol) - No adjustment has been made for timely data - recent weeks likely low



Telehealth only, crisis and investigation services from 03/14/21 to 09/25/21



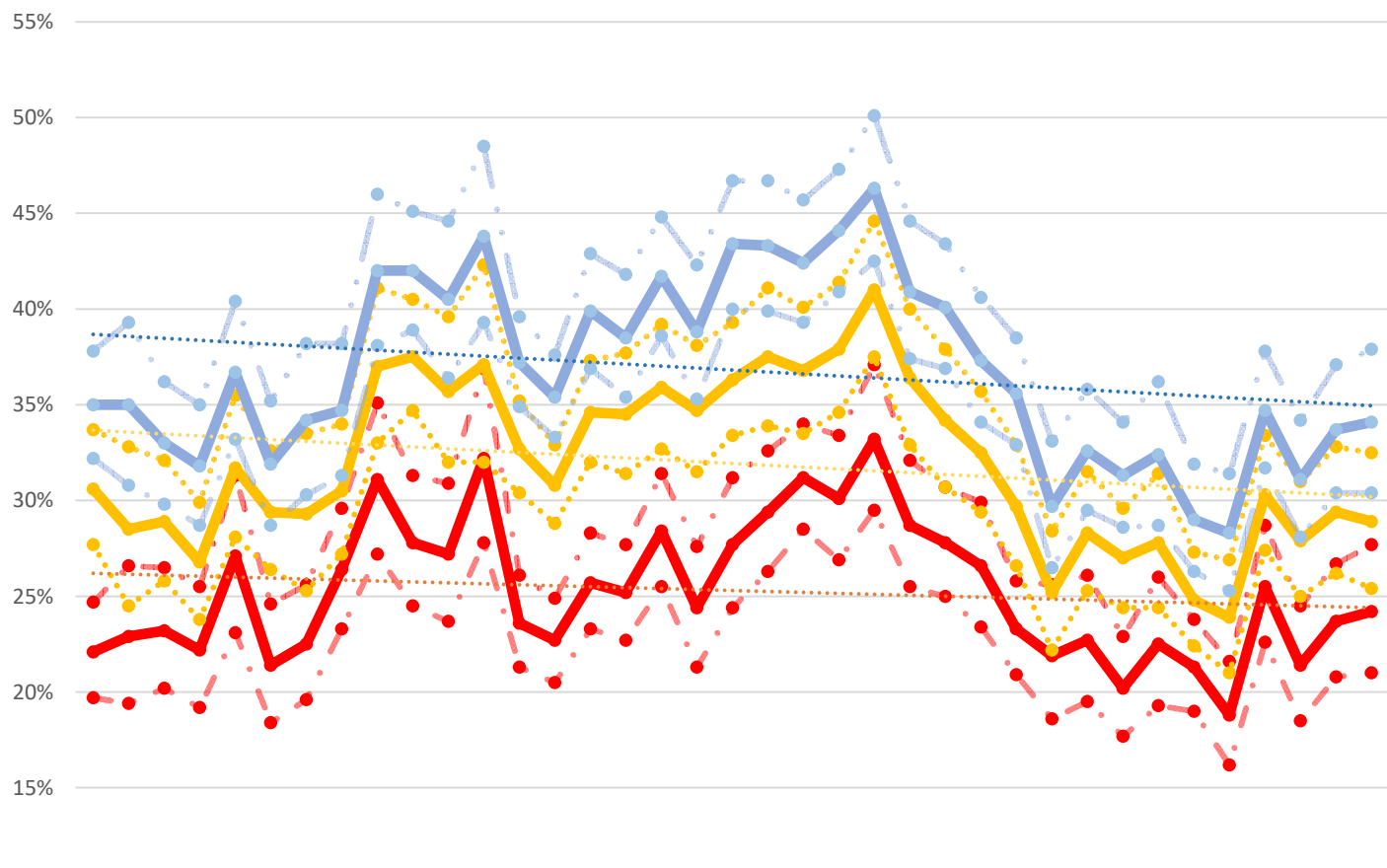
Crisis Service Unit Percent - Crisis Service units divided by Crisis units + Investigation units



Washington State Indicators of Anxiety or Depression Based on Reported Frequency of Symptoms During Last 7 Days

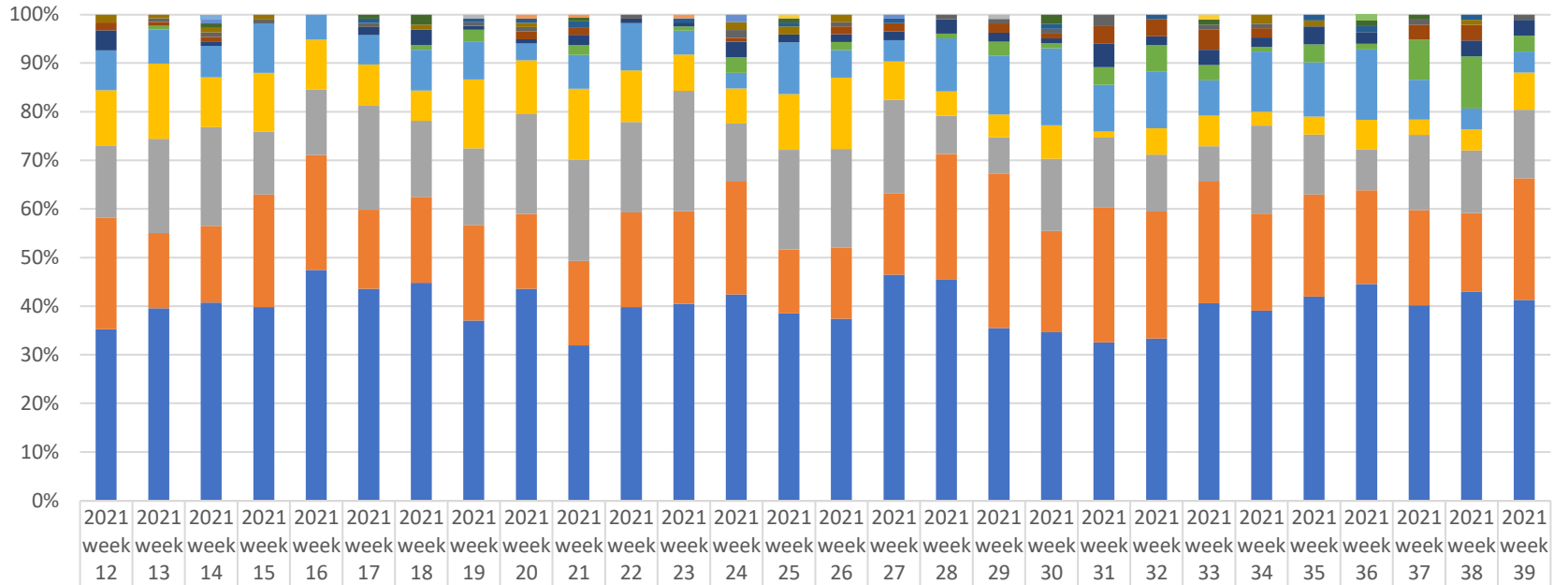
Wkh# IV#Fhqv#v#Exundx/#q#
 fr#erudw#r#z#lk#lyh#hghud#
 djhgf#lv#xq#fk#hg#k#k#rxvhkr#
 Sx#h#xuyh|#r#surgxfh#gdw#rcq#k#h#
 vrfld#dgg#nfrqrp#lf#p#sdfw#r#i#Fry#l#0
 4<#q#Dp#hulfdq#k#rxvhkr#gv#Wkh#
 Krxvhkr#Sx#h#xuyh|#dv#ghvj#qhg#
 w#r#dx#jh#k#h#p#sdfw#r#i#k#h#sdqghp#lf#
 rq#p#s#p#hqw#wd#wv#frqvx#p#h#
 vshqgl#j#h#rrg#h#fxu#w|#k#rxv#l#j#
 hgxfdw#r#q#j#l#ux#s#w#r#q#v#d#q#g#
 g#p#h#q#v#l#r#q#v#r#i#s#k#v#f#d#d#l#q#g#p#h#q#w#d#
 z#h#h#v#v#i

<https://data.cdc.gov/NCHS/Indicators-of-Anxiety-or-Depression-Based-on-Repor/8pt5-q6wp>



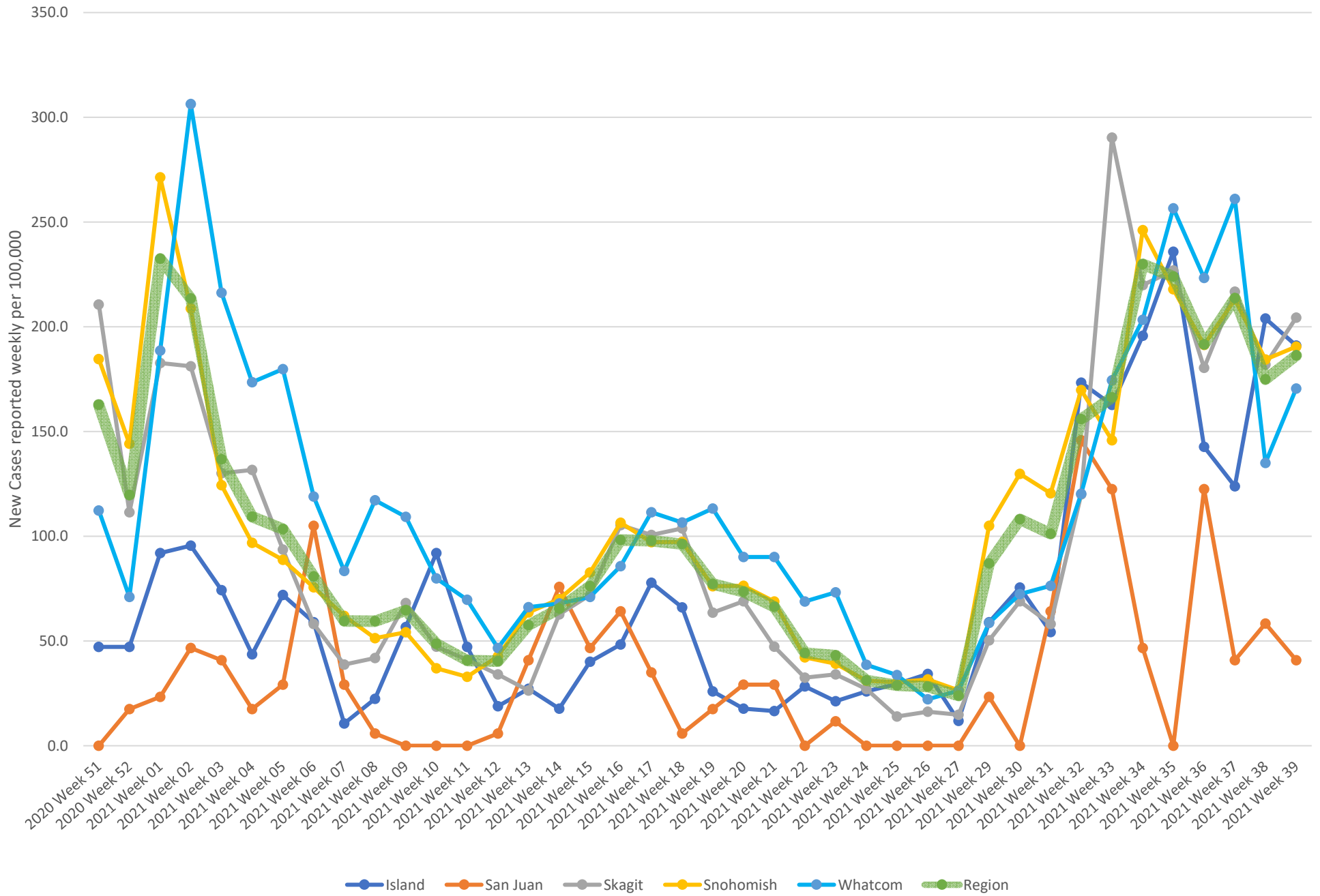
	23 Apr-05	07 May-12	14 May-19	21 May-26	28 May-02	04 Jun-09	11 Jun-16	18 Jun-23	25 Jun-30	02 Jul-07	09 Jul-14	16 Jul-21	19 Aug-31	02 Sep-14	16 Sep-28	30 Sep-12	14 Oct-26	28 Oct-09	11 Nov-23	25 Nov-07	09 Dec-21	18 Dec-31	20 Jan-01	03 Feb-15	17 Feb-01	03 Mar-15	17 Mar-29	21 Apr-06	28 Apr-10	12 May-24	26 May-07	09 Jun-21	23 Jun-05	21 Jul-02	04 Aug-16	18 Aug-30	01 Sep-13	
• % with Symptoms of Depressive Disorder low conf. level	20%	19%	20%	19%	23%	18%	20%	23%	27%	25%	24%	28%	21%	21%	23%	23%	26%	21%	24%	26%	29%	27%	30%	26%	25%	23%	21%	19%	20%	18%	19%	19%	16%	23%	19%	21%	21%	
— % with Symptoms of Depressive Disorder value	22%	23%	23%	22%	27%	21%	23%	26%	31%	28%	27%	32%	24%	23%	26%	25%	28%	24%	28%	29%	31%	30%	33%	29%	28%	27%	23%	22%	23%	20%	23%	21%	19%	26%	21%	24%	24%	
• % with Symptoms of Depressive Disorder high conf. level	25%	27%	27%	26%	31%	25%	26%	30%	35%	31%	31%	37%	26%	25%	28%	28%	31%	28%	31%	33%	34%	33%	37%	32%	31%	30%	26%	26%	26%	23%	26%	24%	22%	29%	25%	27%	28%	
• % with Symptoms of Anxiety Disorder low conf. level	28%	25%	26%	24%	28%	26%	25%	27%	33%	35%	32%	32%	30%	29%	32%	31%	33%	32%	33%	34%	34%	35%	38%	33%	31%	29%	27%	22%	25%	24%	24%	22%	21%	27%	25%	26%	25%	
— % with Symptoms of Anxiety Disorder value	31%	29%	29%	27%	32%	29%	29%	31%	37%	38%	36%	37%	33%	31%	35%	35%	36%	35%	36%	38%	37%	38%	38%	41%	36%	34%	33%	30%	25%	28%	27%	28%	25%	24%	30%	28%	29%	29%
• % with Symptoms of Anxiety Disorder high conf. level	34%	33%	32%	30%	36%	33%	34%	34%	41%	41%	40%	42%	35%	33%	37%	38%	39%	38%	39%	41%	40%	41%	45%	40%	38%	36%	33%	28%	32%	30%	31%	27%	27%	33%	31%	33%	33%	
• % with Symptoms of Anxiety or Depressive Disorder low conf. level	32%	31%	30%	29%	33%	29%	30%	31%	38%	39%	36%	39%	35%	33%	37%	35%	39%	35%	40%	40%	39%	41%	43%	37%	37%	34%	33%	27%	30%	29%	29%	26%	25%	32%	28%	30%	30%	
— % with Symptoms of Anxiety or Depressive Disorder value	35%	35%	33%	32%	37%	32%	34%	35%	42%	42%	41%	44%	37%	35%	40%	39%	42%	39%	43%	43%	42%	44%	46%	41%	40%	37%	36%	30%	33%	31%	32%	29%	28%	35%	31%	34%	34%	
• % with Symptoms of Anxiety or Depressive Disorder high conf. level	38%	39%	36%	35%	40%	35%	38%	38%	46%	45%	45%	49%	40%	38%	43%	42%	45%	42%	47%	47%	46%	47%	50%	45%	43%	41%	39%	33%	36%	34%	36%	32%	31%	38%	34%	37%	38%	

Place of Service -Investigations, percent of total by week

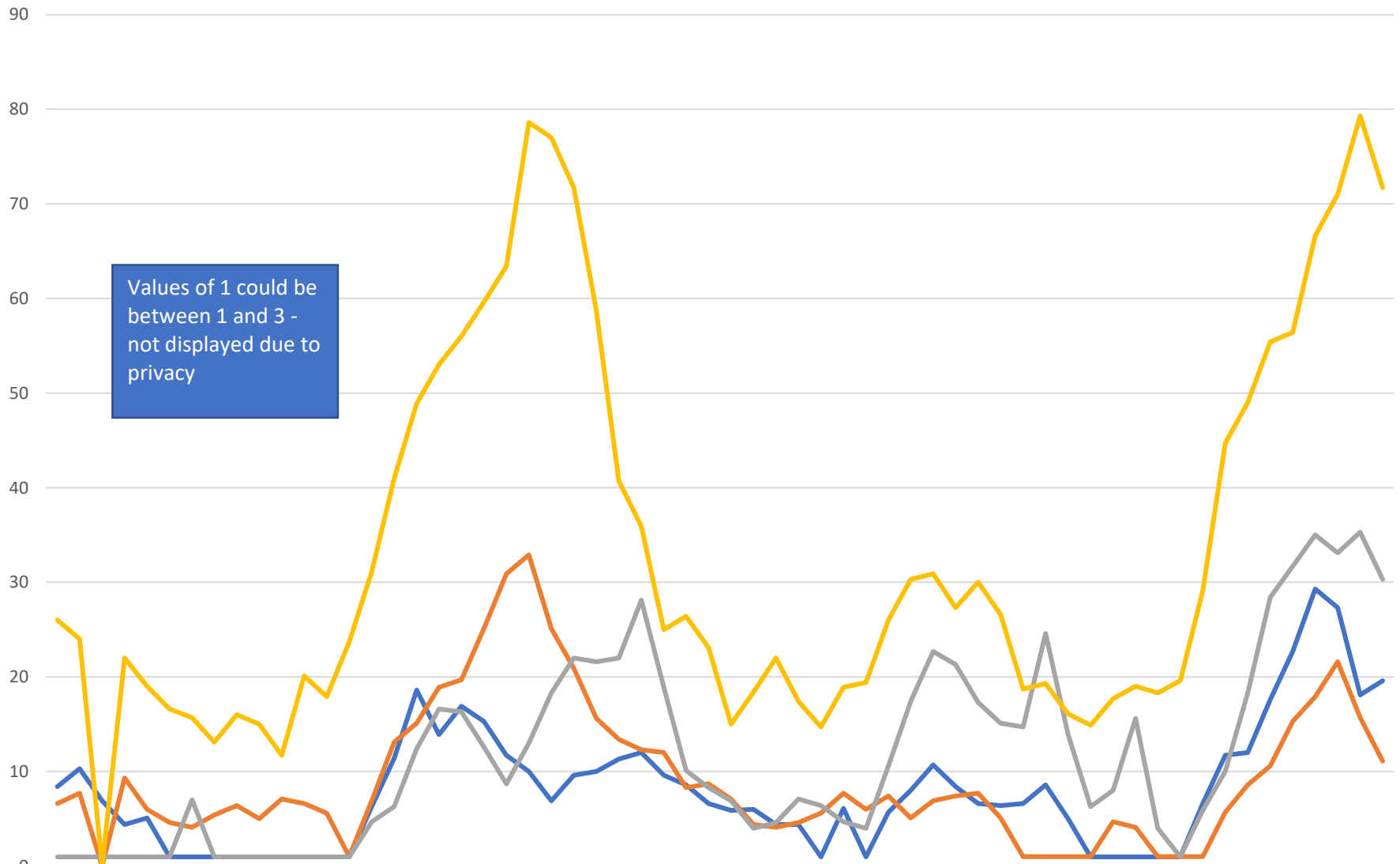


	2021 week 12	2021 week 13	2021 week 14	2021 week 15	2021 week 16	2021 week 17	2021 week 18	2021 week 19	2021 week 20	2021 week 21	2021 week 22	2021 week 23	2021 week 24	2021 week 25	2021 week 26	2021 week 27	2021 week 28	2021 week 29	2021 week 30	2021 week 31	2021 week 32	2021 week 33	2021 week 34	2021 week 35	2021 week 36	2021 week 37	2021 week 38	2021 week 39
Psych. Fac.-Partial Hosp																										1		
School			1																									
Custodial Care Facility														1								1						
Skilled Nursing Facility								1										1										
Nursing Facility									1	1		1																
Homeless Shelter			1										2				1											
Psych. Residential			1			1	2			1				1					2			1			1	1		
Community Mental Health Center						1		1	1	2		1		1		1			1		1			1	1		1	
Group Home	2	1	1	1			1		1				2	2	2								2	1				1
Telehealth		1	1	1		1		1	1		1		2		1		1	1	1	2		1	1			1		1
Assisted Living Facility	2	1	1						2	2			1		2	2		2	1	3	4	4	2				3	3
Home	5		1			2	3	1	1	3	1	1	4	2	2	2	3	2	1	4	2	3	2	3	2		3	3
Office		1					1	3		3		1	4		2		1	3	1	3	6	3	1	3	1	8	10	3
Prison Correctional Facility	10	9	7	11	5	7	8	10	4	10	11	6	4	13	7	5	11	13	16	8	13	7	13	9	12	8	4	4
Inpatient Hospital	14	20	11	13	10	10	6	18	13	21	12	9	9	14	18	9	5	5	7	1	6	6	3	3	5	3	4	7
Inpatient Psychiatric Facility	18	25	22	14	13	25	15	20	24	30	21	30	15	25	25	22	8	8	15	12	13	7	19	10	7	15	12	13
Other Place of Service	28	20	17	25	23	19	17	25	18	25	22	23	29	16	18	19	26	34	21	23	29	24	21	17	16	19	15	23
Emergency Room Hospital	43	51	44	43	46	51	43	47	51	46	45	49	53	47	46	53	46	38	35	27	37	39	41	34	37	39	40	38

New COVID-19 Cases Reported Weekly per 100,000 population - 12/15/20 to 09/29/21



Total Hospitalized Adults - COVID-19 (confirmed or suspected) 7 day average



Values of 1 could be between 1 and 3 - not displayed due to privacy

	7/31/20	8/7/20	8/14/20	8/21/20	8/28/20	9/4/20	9/11/20	9/18/20	9/25/20	10/2/20	10/9/20	10/16/20	10/23/20	10/30/20	11/6/20	11/13/20	11/20/20	11/27/20	12/4/20	12/11/20	12/18/20	12/25/20	1/1/21	1/8/21	1/15/21	1/22/21	1/29/21	2/5/21	2/12/21	2/19/21	2/26/21	3/5/21	3/13/21	3/20/21	3/27/21	4/3/21	4/10/21	4/17/21	4/24/21	4/30/21	5/7/21	5/14/21	5/21/21	5/28/21	6/4/21	6/11/21	6/18/21	6/25/21	7/2/21	7/9/21	7/16/21	7/23/21	7/30/21	8/6/21	8/13/21	8/20/21	8/27/21	9/3/21	9/10/21	9/17/21
--	---------	--------	---------	---------	---------	--------	---------	---------	---------	---------	---------	----------	----------	----------	---------	----------	----------	----------	---------	----------	----------	----------	--------	--------	---------	---------	---------	--------	---------	---------	---------	--------	---------	---------	---------	--------	---------	---------	---------	---------	--------	---------	---------	---------	--------	---------	---------	---------	--------	--------	---------	---------	---------	--------	---------	---------	---------	--------	---------	---------

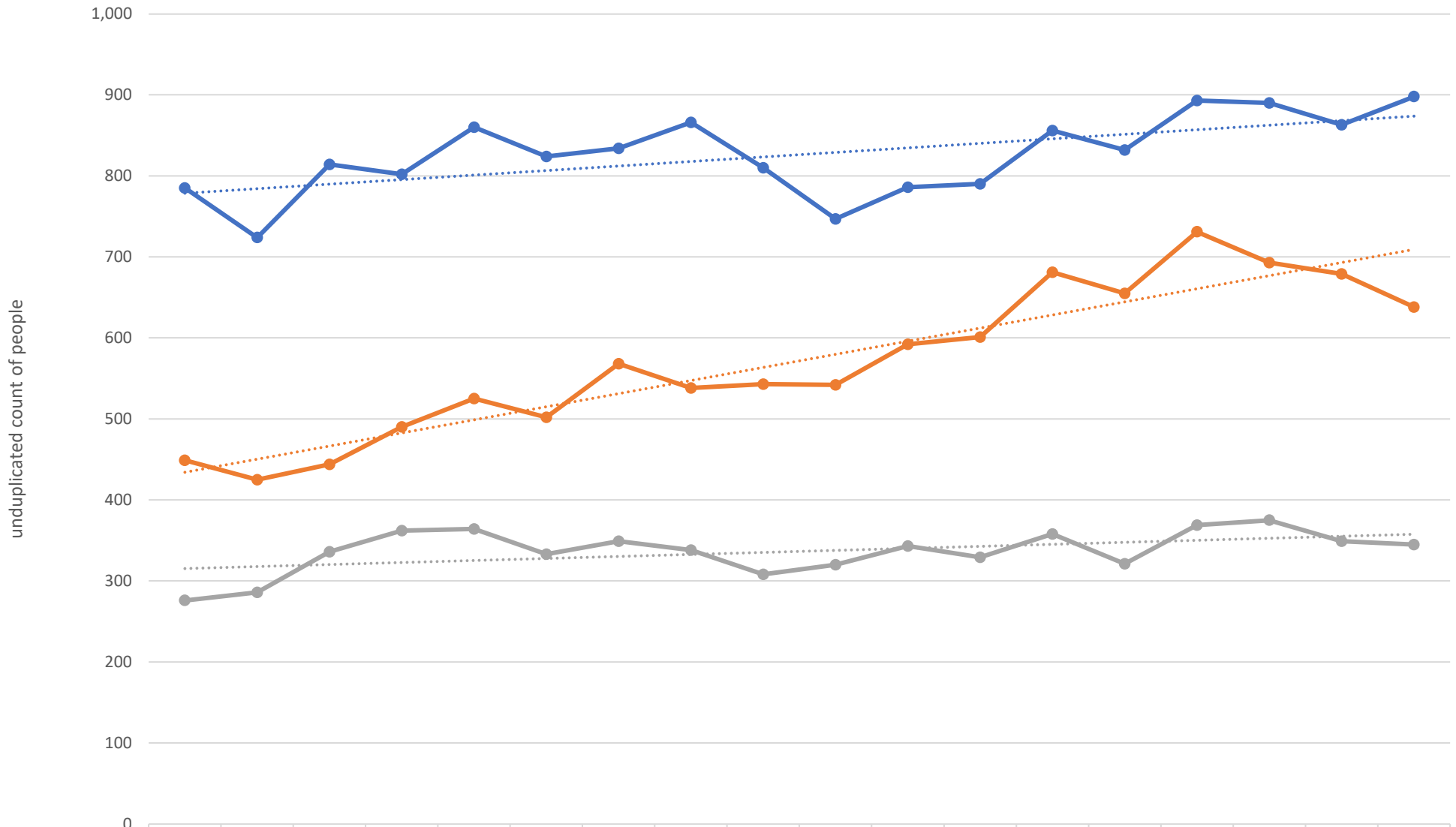
SVH	8.4	10	6.9	4.4	5.1	1	1	1	1	1	1	1	1	1	6.3	11	19	14	17	15	12	10	6.9	9.6	10	11	12	9.6	8.6	6.6	5.9	6	4.4	4.4	1	6.1	1	5.7	8	11	8.4	6.6	6.4	6.6	8.6	5	1	1	1	1	4.7	4.1	1	1	1	6.6	12	12	18	23	29	27	18	20
Swedish Edmonds	6.6	7.7	0	9.3	6	4.6	4.1	5.4	6.4	5	7.1	6.6	5.6	1	6.9	13	15	19	20	25	31	33	25	21	16	13	12	12	8.3	8.7	7.1	4.4	4.1	4.6	5.6	7.7	6	7.4	5.1	6.9	7.4	7.7	5.1	1	1	1	1	4.7	4.1	1	1	1	5.7	8.6	11	15	18	22	16	11				
ST Joe	1	1	1	1	1	1	7	1	1	1	1	1	1	1	4.7	6.3	12	17	16	13	8.7	13	18	22	22	22	28	19	10	8.3	6.9	4	4.6	7.1	6.4	4.7	4	11	17	23	21	17	15	15	25	14	6.3	8	16	4	1	5.9	10	18	28	32	35	33	35	30				
Prov. Everett	26	24	0	22	19	17	16	13	16	15	12	20	18	24	31	41	49	53	56	60	63	79	77	72	59	41	36	25	26	23	15	18	22	17	15	19	19	26	30	31	27	30	27	19	19	16	15	18	19	18	20	29	45	49	55	56	67	71	79	72				



North Sound Crisis System Dashboard

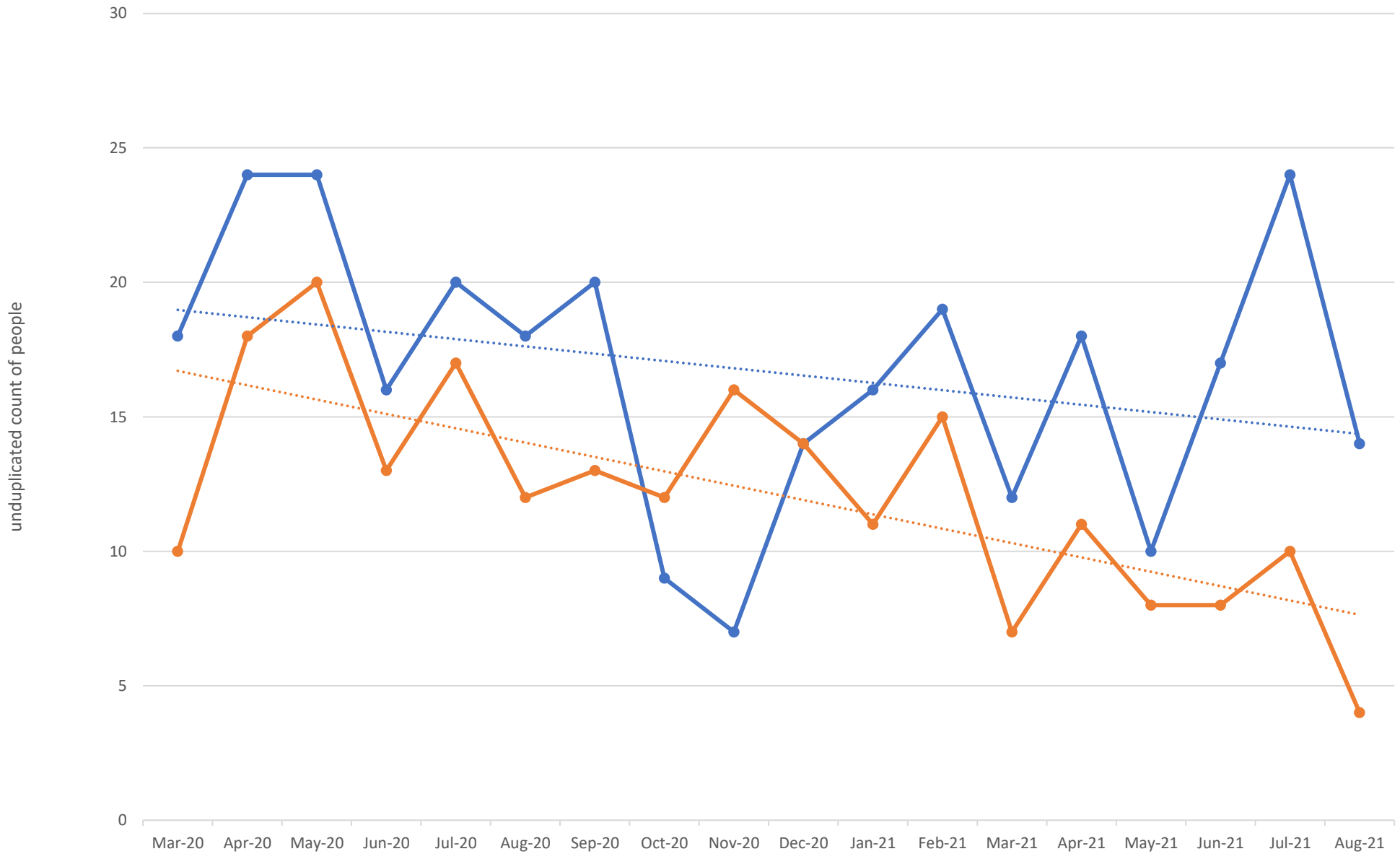
Page 2	Unduplicated People receiving a crisis system service
Page 3	Island - Unduplicated People receiving a crisis system service
Page 4	San Juan - Unduplicated People receiving a crisis system service
Page 5	Skagit - Unduplicated People receiving a crisis system service
Page 6	Snohomish - Unduplicated People receiving a crisis system service
Page 7	Whatcom - Unduplicated People receiving a crisis system service
Page 8	Region Designated Crisis Responder (DCR) Investigations
Page 9	Region DCR Investigation Referral Sources
Page 10	Region DCR Investigation Outcomes

Unduplicated People receiving a crisis system service



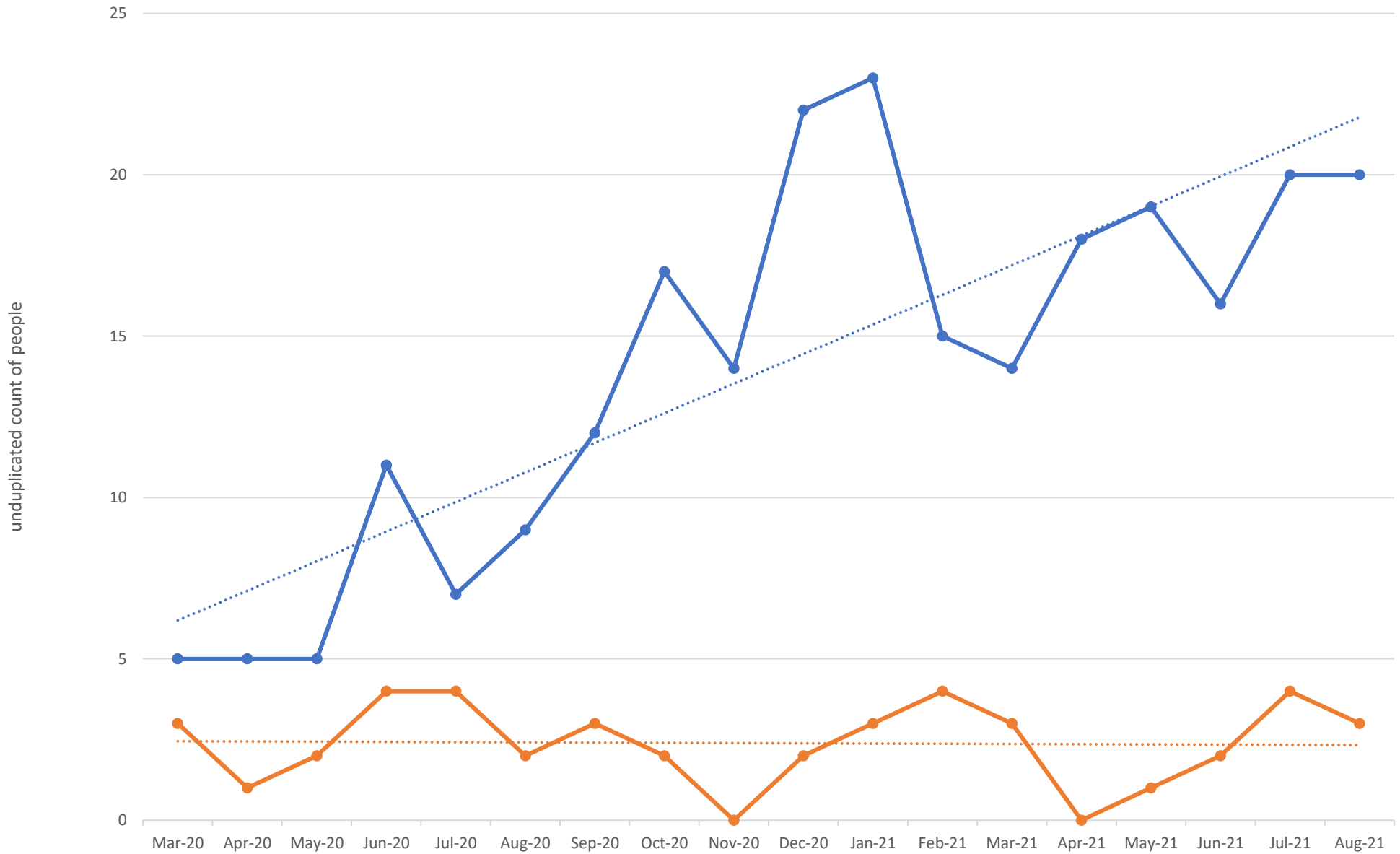
	Mar-20	Apr-20	May-20	Jun-20	Jul-20	Aug-20	Sep-20	Oct-20	Nov-20	Dec-20	Jan-21	Feb-21	Mar-21	Apr-21	May-21	Jun-21	Jul-21	Aug-21
● Crisis Call	785	724	814	802	860	824	834	866	810	747	786	790	856	832	893	890	863	898
● Crisis Service	449	425	444	490	525	502	568	538	543	542	592	601	681	655	731	693	679	638
● Investigation	276	286	336	362	364	333	349	338	308	320	343	329	358	321	369	375	349	345

Island - Unduplicated People receiving a crisis system service



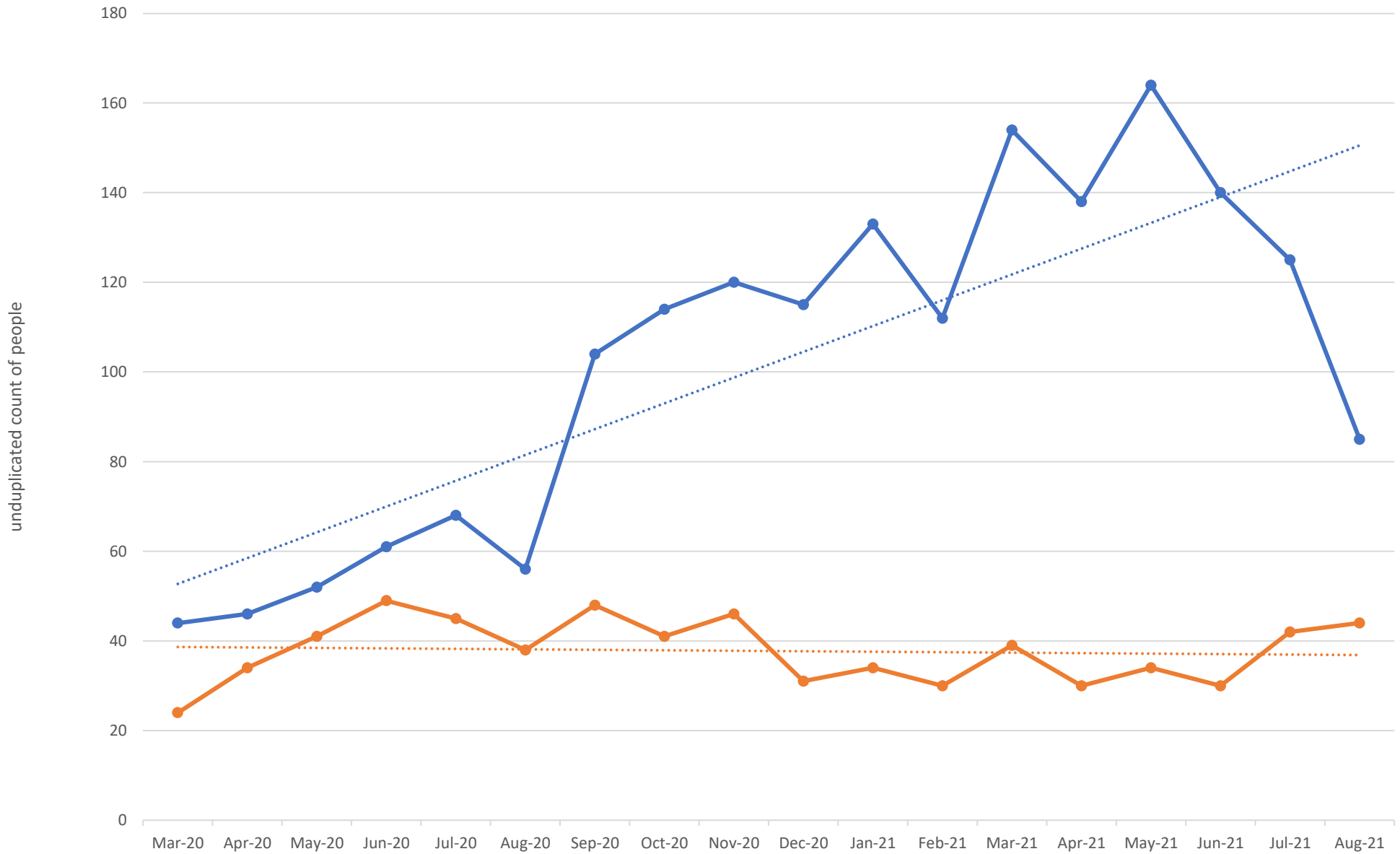
	Mar-20	Apr-20	May-20	Jun-20	Jul-20	Aug-20	Sep-20	Oct-20	Nov-20	Dec-20	Jan-21	Feb-21	Mar-21	Apr-21	May-21	Jun-21	Jul-21	Aug-21
Crisis Service	18	24	24	16	20	18	20	9	7	14	16	19	12	18	10	17	24	14
Investigation	10	18	20	13	17	12	13	12	16	14	11	15	7	11	8	8	10	4

San Juan - Unduplicated People receiving a crisis system service



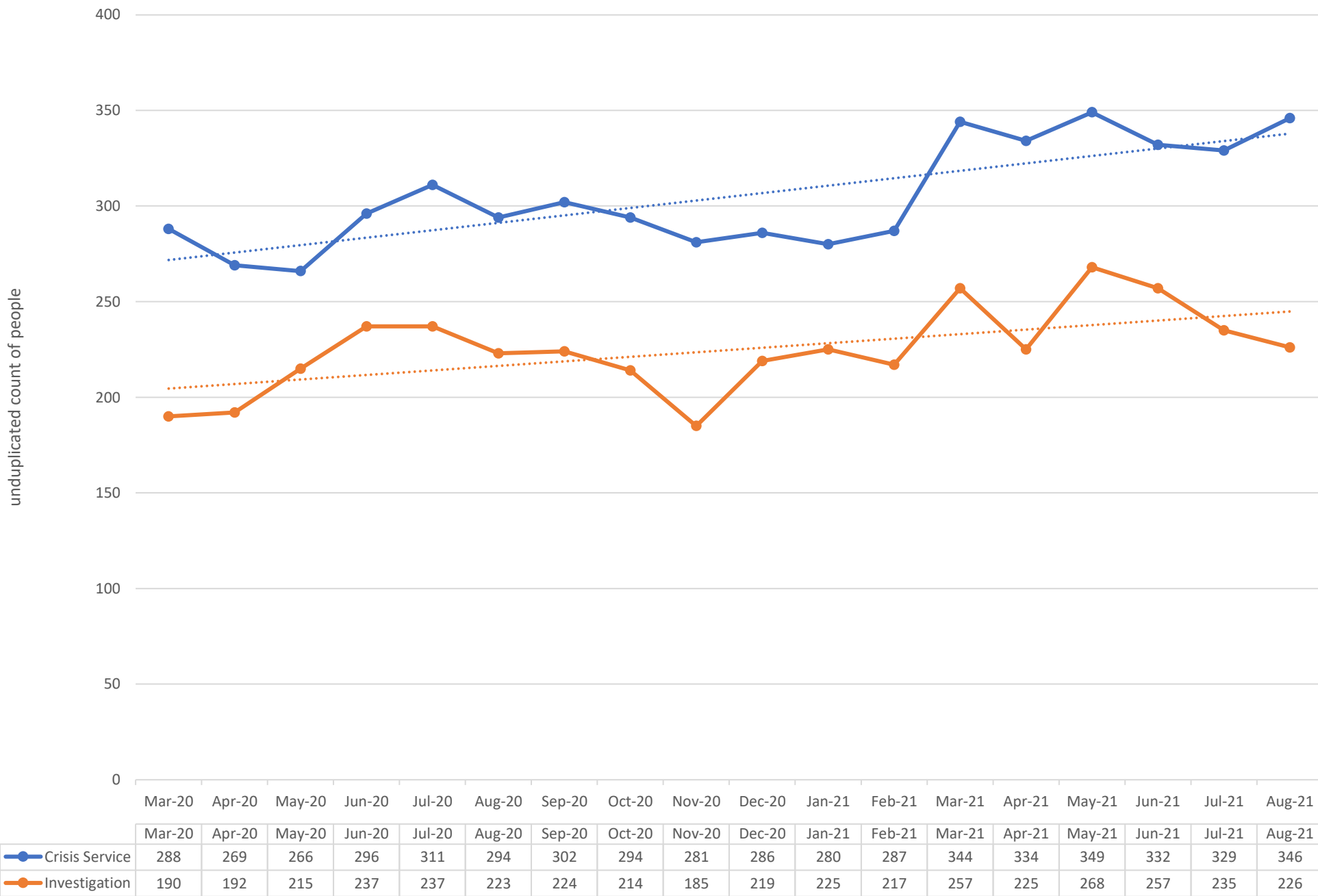
	Mar-20	Apr-20	May-20	Jun-20	Jul-20	Aug-20	Sep-20	Oct-20	Nov-20	Dec-20	Jan-21	Feb-21	Mar-21	Apr-21	May-21	Jun-21	Jul-21	Aug-21
● Crisis Service	5	5	5	11	7	9	12	17	14	22	23	15	14	18	19	16	20	20
● Investigation	3	1	2	4	4	2	3	2	0	2	3	4	3	0	1	2	4	3

Skagit - Unduplicated People receiving a crisis system service

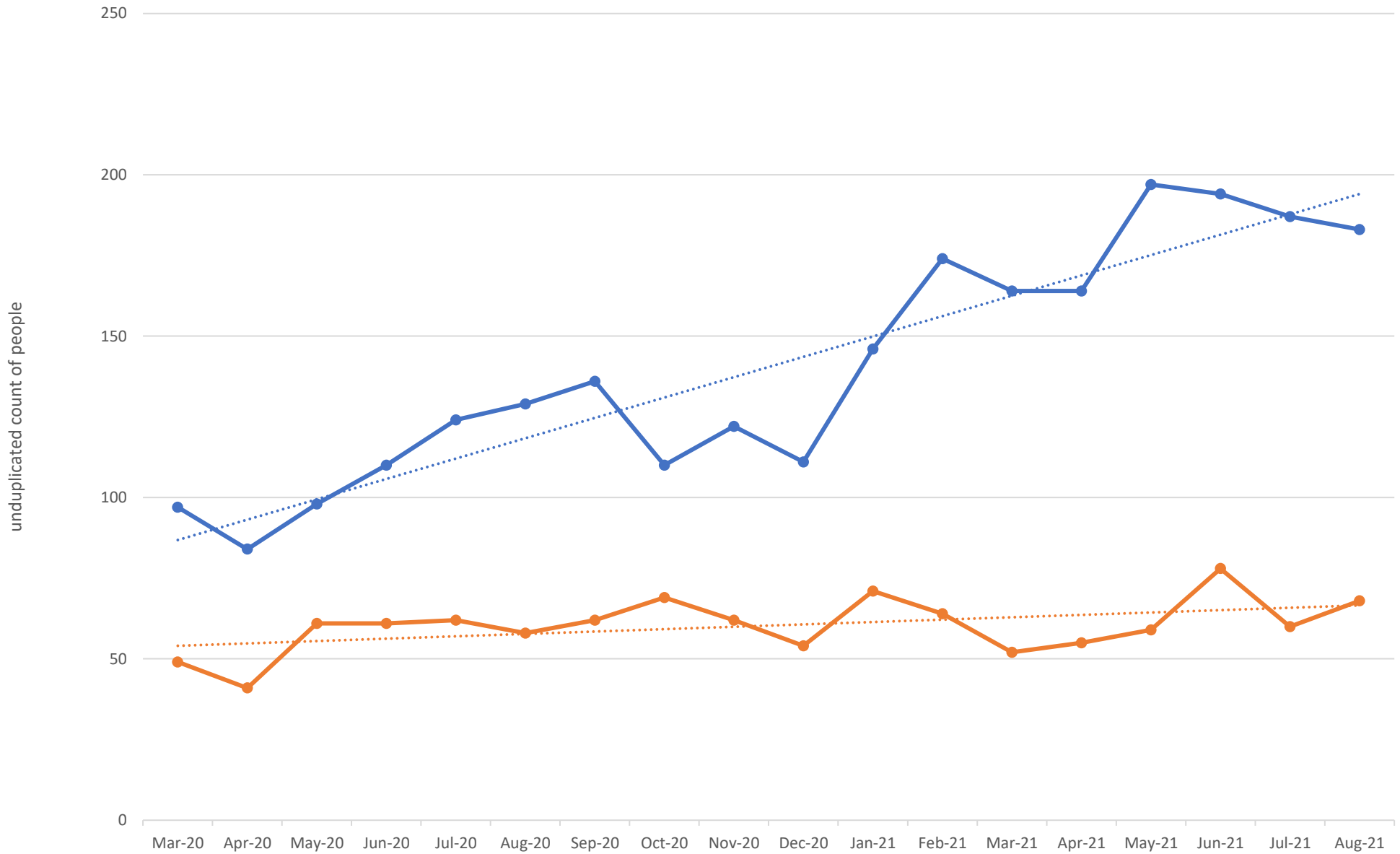


	Mar-20	Apr-20	May-20	Jun-20	Jul-20	Aug-20	Sep-20	Oct-20	Nov-20	Dec-20	Jan-21	Feb-21	Mar-21	Apr-21	May-21	Jun-21	Jul-21	Aug-21
● Crisis Service	44	46	52	61	68	56	104	114	120	115	133	112	154	138	164	140	125	85
● Investigation	24	34	41	49	45	38	48	41	46	31	34	30	39	30	34	30	42	44

Snohomish - Unduplicated People receiving a crisis system service

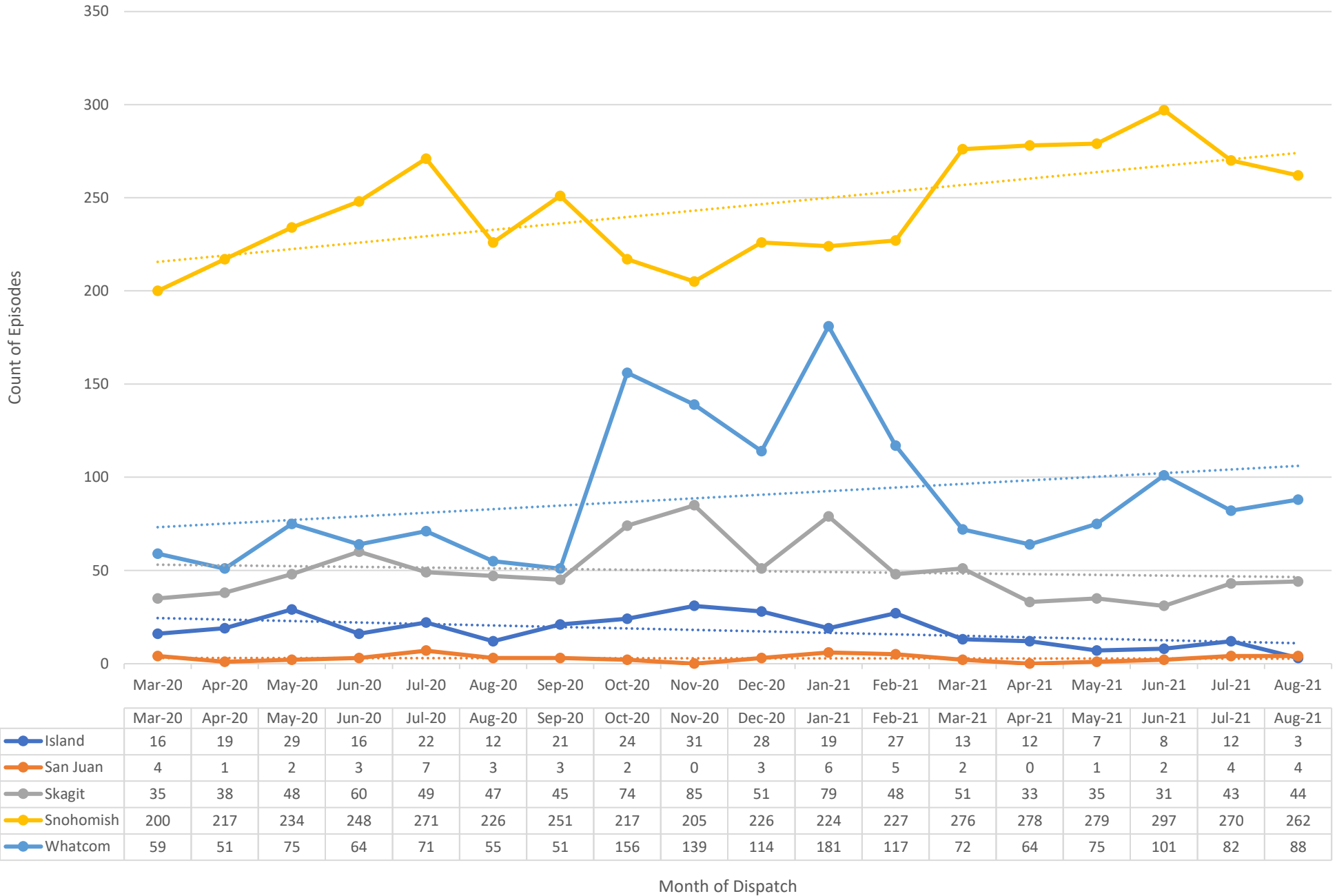


Whatcom - Unduplicated People receiving a crisis system service

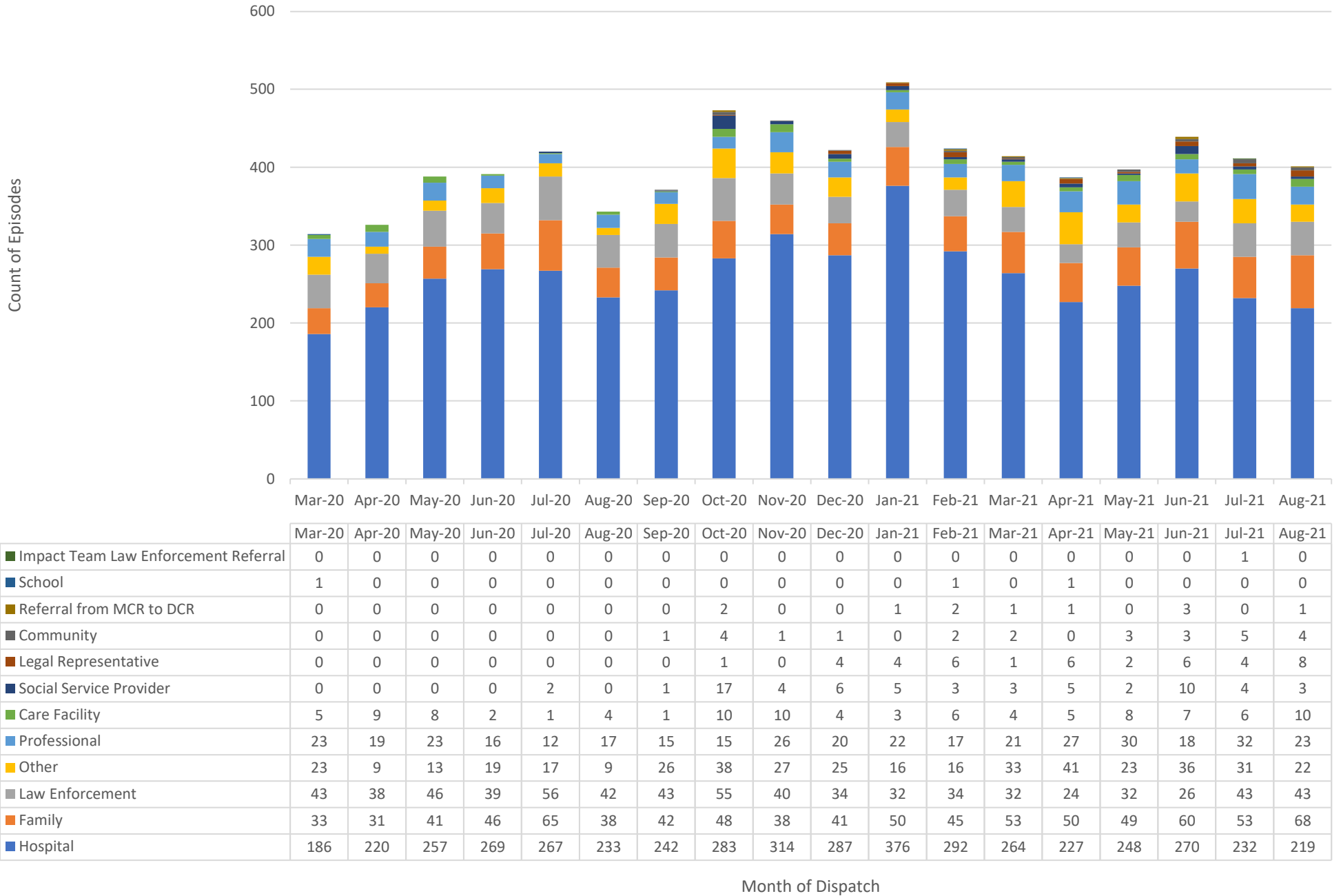


	Mar-20	Apr-20	May-20	Jun-20	Jul-20	Aug-20	Sep-20	Oct-20	Nov-20	Dec-20	Jan-21	Feb-21	Mar-21	Apr-21	May-21	Jun-21	Jul-21	Aug-21
● Crisis Service	97	84	98	110	124	129	136	110	122	111	146	174	164	164	197	194	187	183
● Investigation	49	41	61	61	62	58	62	69	62	54	71	64	52	55	59	78	60	68

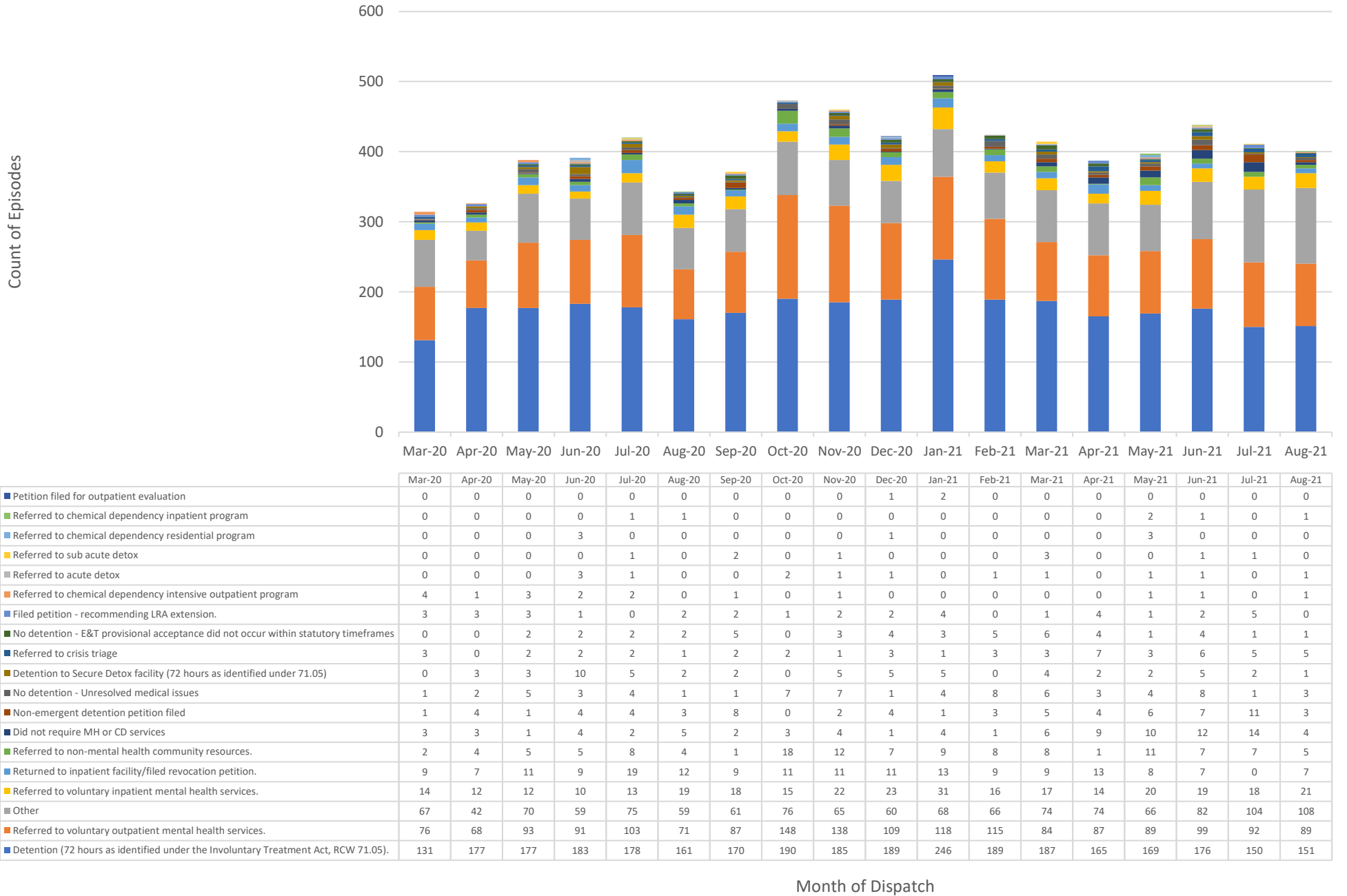
Region Designated Crisis Responder (DCR) Investigations



Region DCR Investigation Referral Sources



Region DCR Investigation Outcomes





Western State Hospital Update

Joseph R. Bigelow, Psy,D.



Western State Hospital (WSH)

- Located in Lakewood, WA
- 800 bed capacity and 1800 Employees
- Civil and forensic patients
- Shifting to forensic only

WSH Liaison Duties

- Primary responsibility: Provide support and care for clients discharging to the community, ensuring the safety of both the community and the client.
- Caseload management
 - Monitor census
 - Update NSBH-ASO tracking documents
 - Generate various documents
 - Case consultation
- Discharging clients
 - Placement referral
 - Medical, mental health, and conditional release/less restrictive monitoring appointments
 - Coordinate with Health Care Authority for post discharge MCO/ASO assignments
 - Work with WSH and Health Care Authority to address barriers to discharge
 - Facilitate opportunities for peer bridgers to connect with MCOs and clients

Caseload

- 16 Civil clients with 8 on active discharge
- 17 Forensic clients with 2 on active discharge
- 23 Discharges in the past calendar year

Covid Related Items

- Last week 10 wards were on Covid hold
- Governor's vaccine mandate
- Negative results for discharge
- Vaccination difficulty for single dosed discharging clients
- Fluctuating on outside professional presence
- Screening staff and professionals for symptoms
- 80% of staff vaccinated
- Lack of community providers

Challenges

- Social Work Director taking temp position for 6-12 months (no replacement)
- Secretary Supervisor if Social Work has taken a different position (no replacement yet)
- Social worker shift/high turn over/new staff
- Emergency staffing plan
- Forensic social workers unfamiliar with discharge process
- Clients not being properly assigned to a specific MCO/ASO

Challenges

- Simplification of peer bridger process
- Working agreement in process

Shift to Forensic Center of Excellence

- Discharge of civil clients and 90/180 day community beds
- No civil intake for last 2 years
- Directed to close 5 more wards on civil side, with an additional 2 wards in 2022.

90/180 Day Community Beds

- New model for civil commitment
- Three contracted long-term beds in the North Sound Area-TeleCare