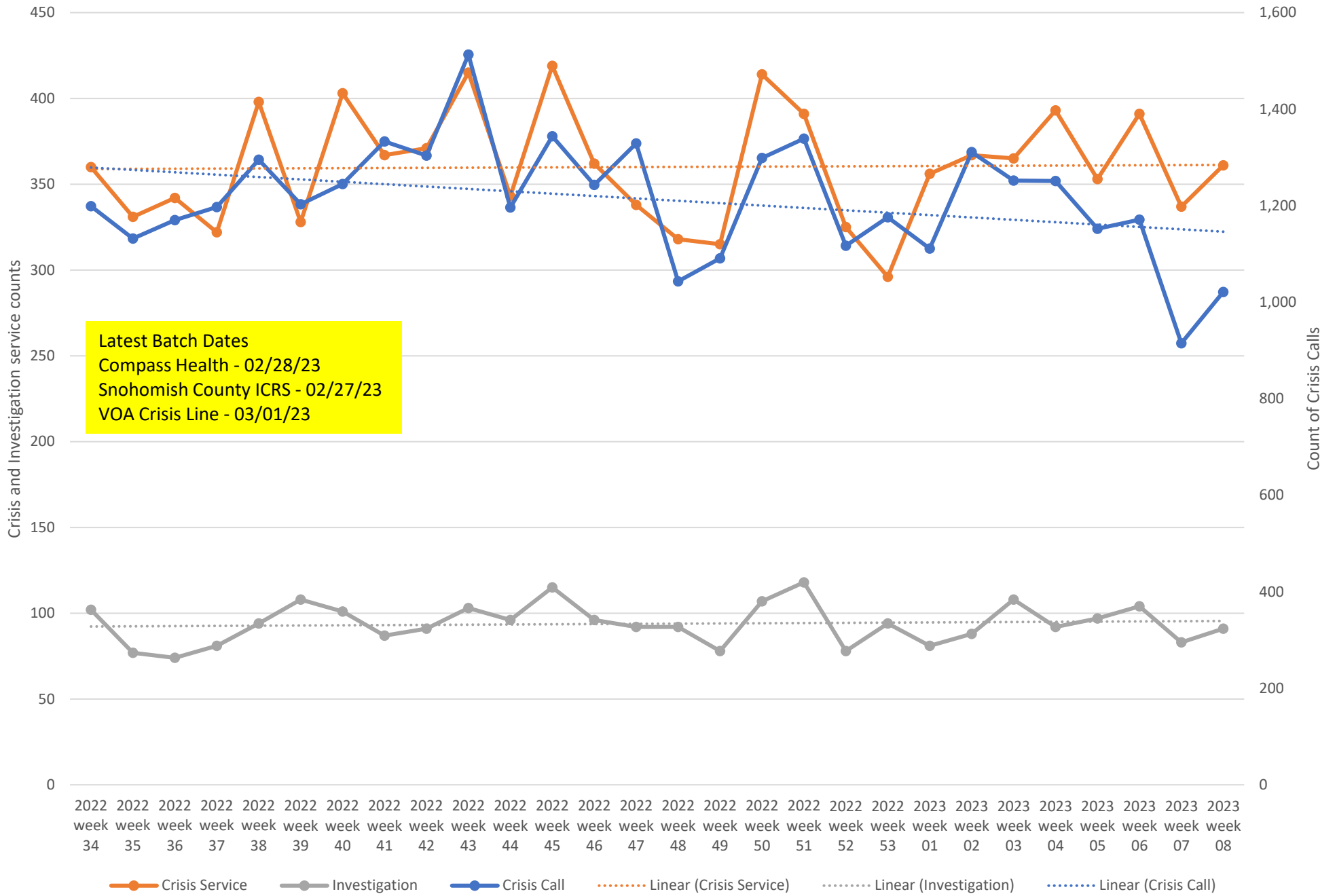




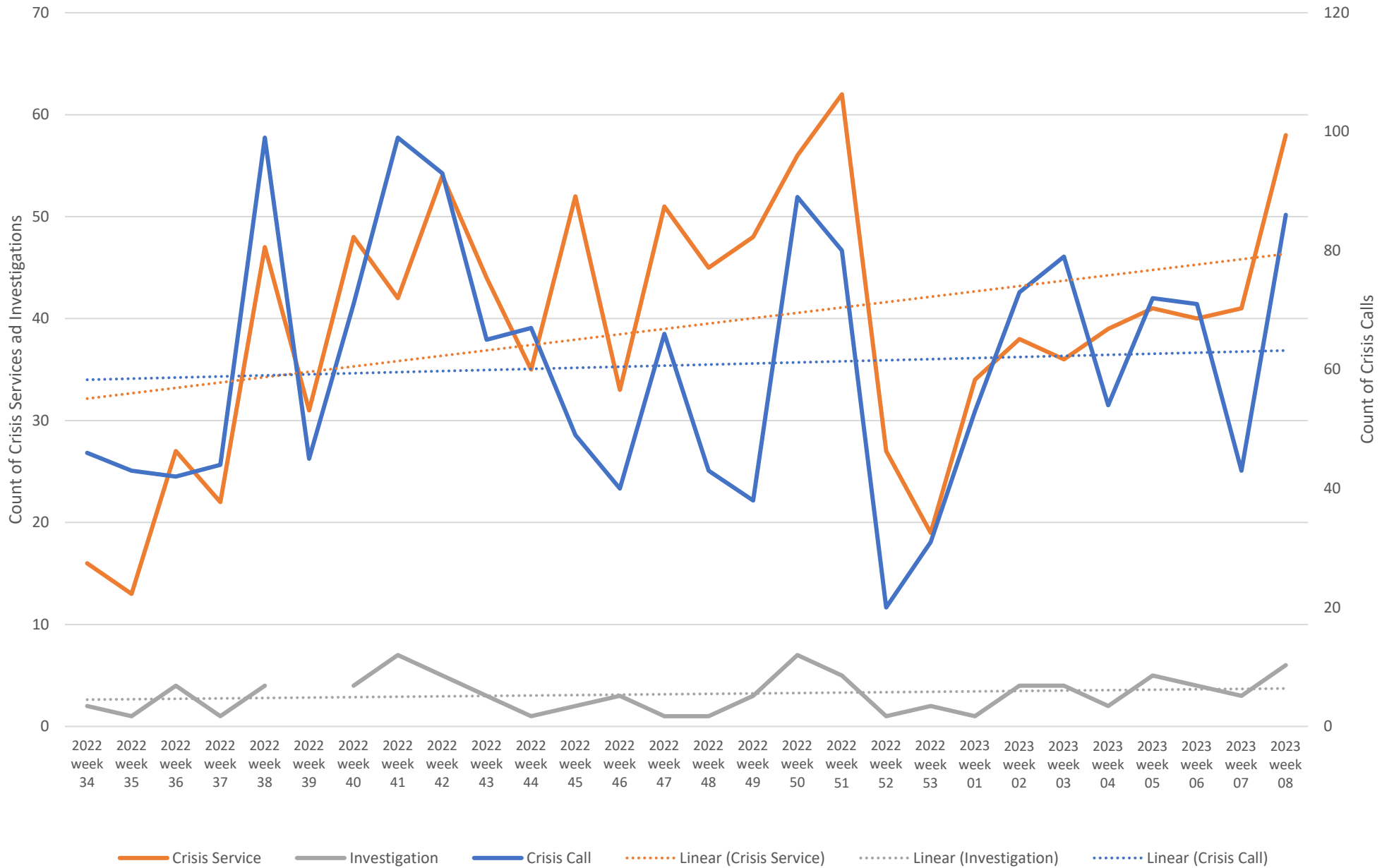
Weekly Crisis Capacity Indicator Snapshot

Page 2	Crisis Data - dates 08/14/22 to 02/25/23
Page 3	Crisis Data: Ages 0-17 - dates 08/14/22 to 02/25/23
Page 4	All DCR Dispatches - dates 08/14/22 to 02/25/23
Page 5	Weekly Staff Count - Staff providing Crisis or Investigation services 08/14/22 to 02/25/23
Page 6	Hospital placement locations (Invol and Vol) - No adjustment has been made for timely data - recent weeks likely low
Page 7	Telehealth only, crisis and investigation services from 08/14/22 to 02/25/23
Page 8	Crisis Service Unit Percent - Crisis Service units divided by Crisis units + Investigation units
Page 9	Washington State Indicators of Anxiety or Depression Based on Reported Frequency of Symptoms During Last 7 Days
Page 10	Place of Service -Crisis Services, percent of total by week
Page 11	Place of Service -Investigations, percent of total by week
Page 12	New COVID-19 Cases Reported Weekly per 100,000 population - 04/13/22 to 03/01/23
Page 13	New COVID-19 Deaths Reported Weekly per 1,000,000 population - 04/13/22 to 03/01/23
Page 14	Total Hospitalized Adults - COVID-19 (confirmed or suspected) 7 day average
Page 15	North Sound BH ASO Walkaway Chart 08/14/22 to 02/25/23

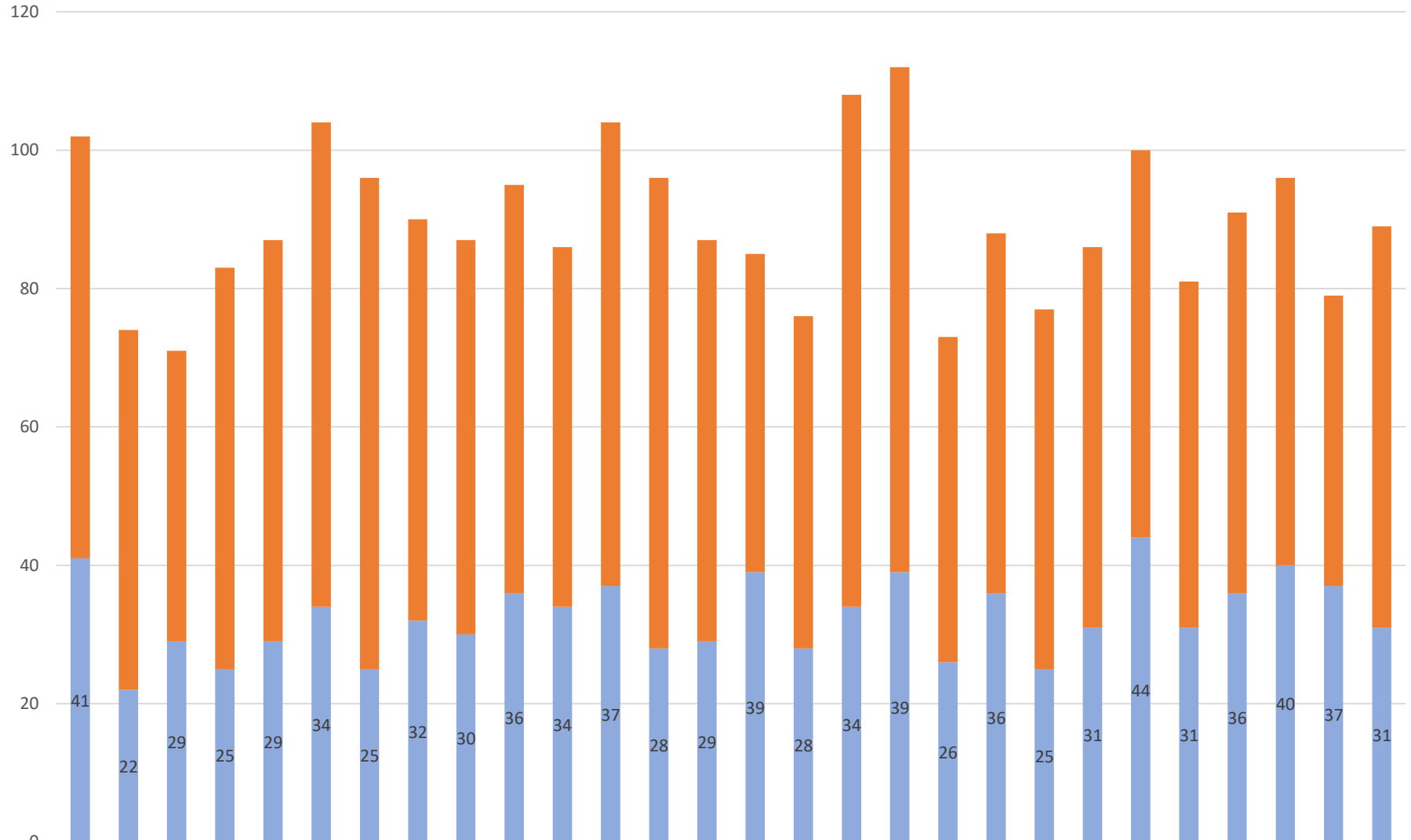
Crisis Data - dates 08/14/22 to 02/25/23



Crisis Data: Ages 0-17 - dates 08/14/22 to 02/25/23

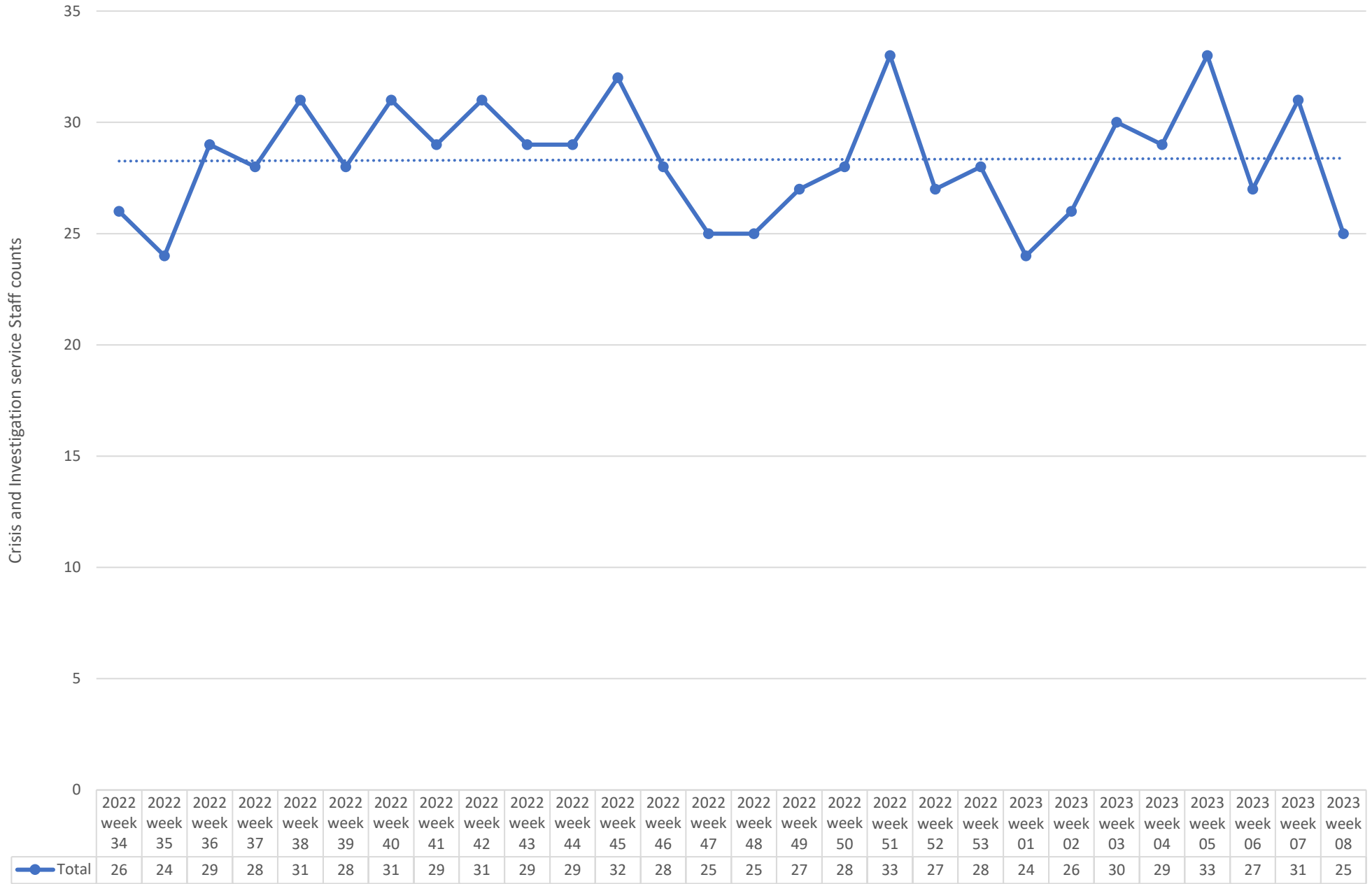


All DCR Dispatches - dates 08/14/22 to 02/25/23



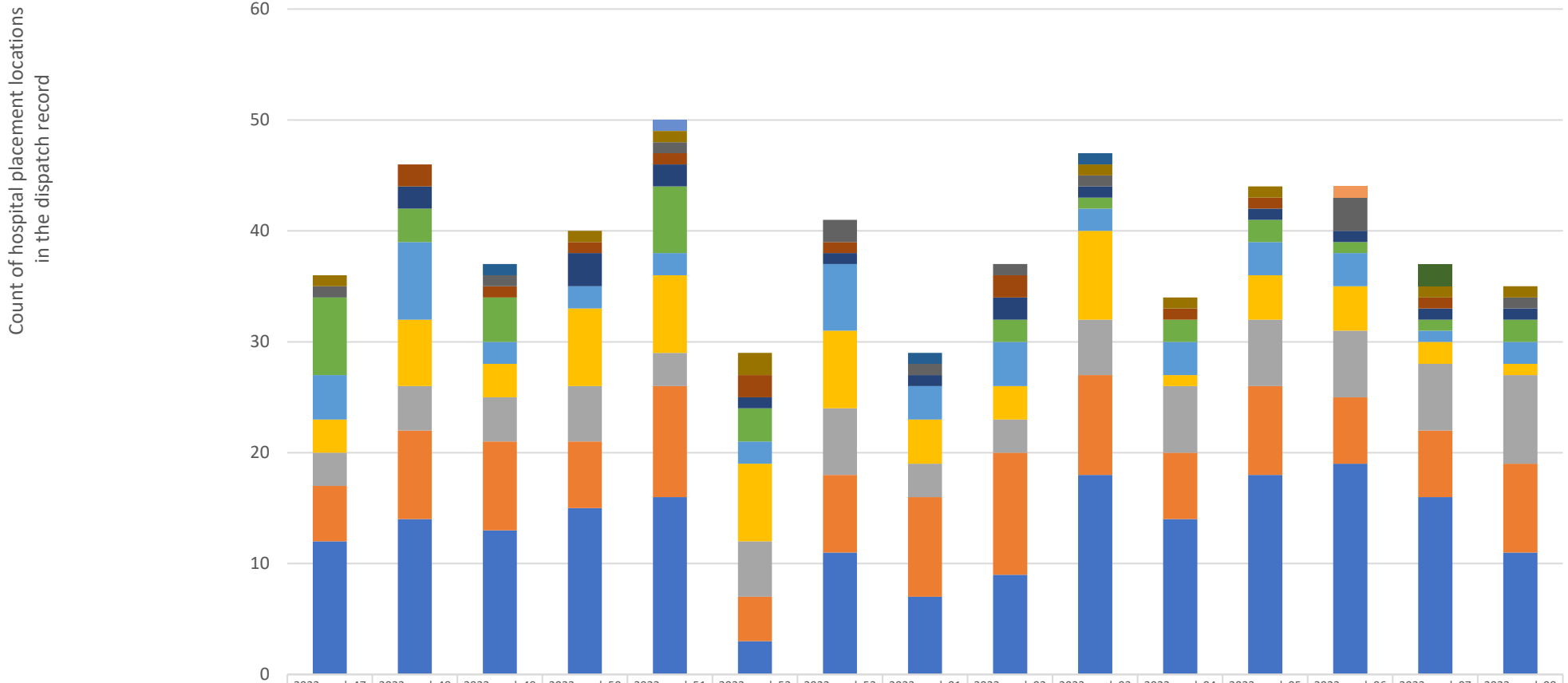
dispatch resulting in other outcome	61	52	42	58	58	70	71	58	57	59	52	67	68	58	46	48	74	73	47	52	52	55	56	50	55	56	42	58
dispatch resulting in detention	41	22	29	25	29	34	25	32	30	36	34	37	28	29	39	28	34	39	26	36	25	31	44	31	36	40	37	31

Weekly Staff Count - Staff providing Crisis or Investigation services 08/14/22 to 02/25/23



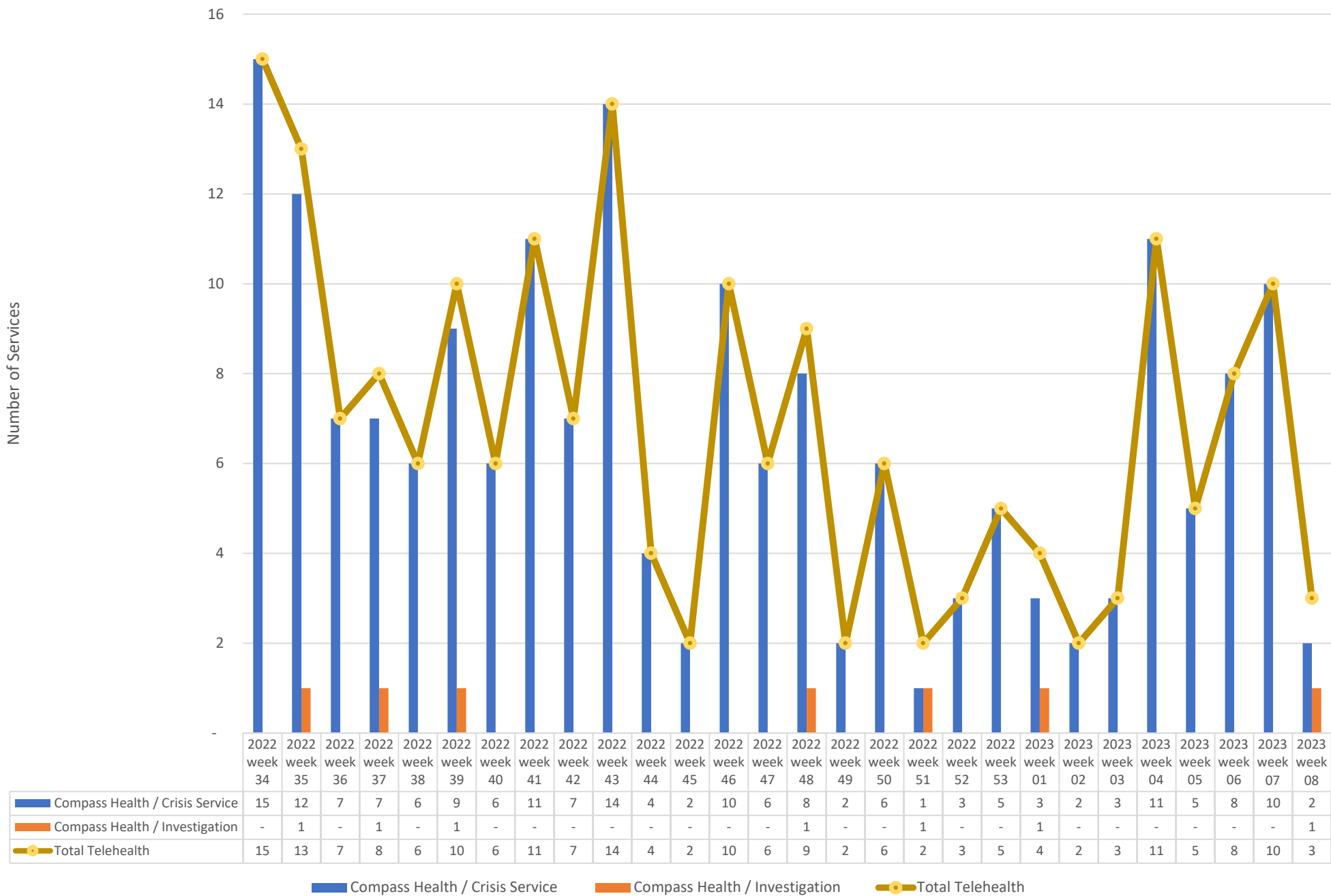
2023 week 08 ending 01/00/00

Hospital placement locations (Invol and Vol) - No adjustment has been made for timely data - recent weeks likely low

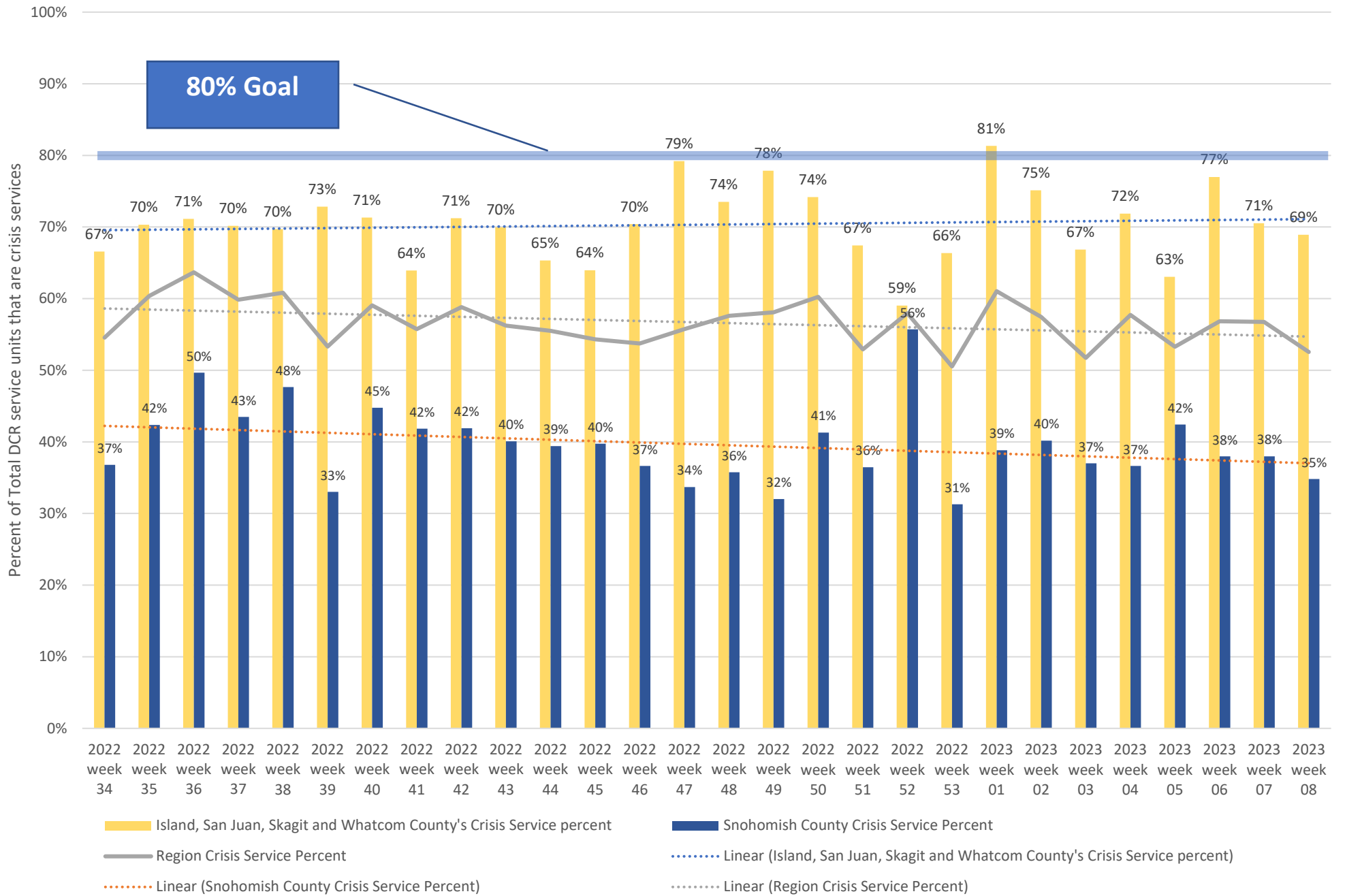


	2022 week 47	2022 week 48	2022 week 49	2022 week 50	2022 week 51	2022 week 52	2022 week 53	2023 week 01	2023 week 02	2023 week 03	2023 week 04	2023 week 05	2023 week 06	2023 week 07	2023 week 08
Cascade E&T Center													1		
THURSTON/MASON EandT FACILITY					1										
Cascade Behavioral Hospital LLC														2	
Valley Cities Counseling And Consultation			1					1		1					
ABHS Chehalis	1			1	1	2				1	1	1		1	1
VALLEY GENERAL HOSPITAL	1		1		1		2	1	1	1			3		1
Mukilteo		2	1	1	1	2	1		2		1	1		1	
Telecare North Sound Evaluation and Treatment		2		3	2	1	1	1	2	1		1	1	1	1
BHC Fairfax Hospital INC	7	3	4		6	3			2	1	2	2	1	1	2
SMOKEY POINT BEHAVIORAL HOSPITAL	4	7	2	2	2	2	6	3	4	2	3	3	3	1	2
Skagit Valley Hospital	3	6	3	7	7	7	7	4	3	8	1	4	4	2	1
Peacehealth Bellingham	3	4	4	5	3	5	6	3	3	5	6	6	6	6	8
SWEDISH EDMONDS	5	8	8	6	10	4	7	9	11	9	6	8	6	6	8
Providence Everett	12	14	13	15	16	3	11	7	9	18	14	18	19	16	11

Telehealth only, crisis and investigation services from 08/14/22 to 02/25/23



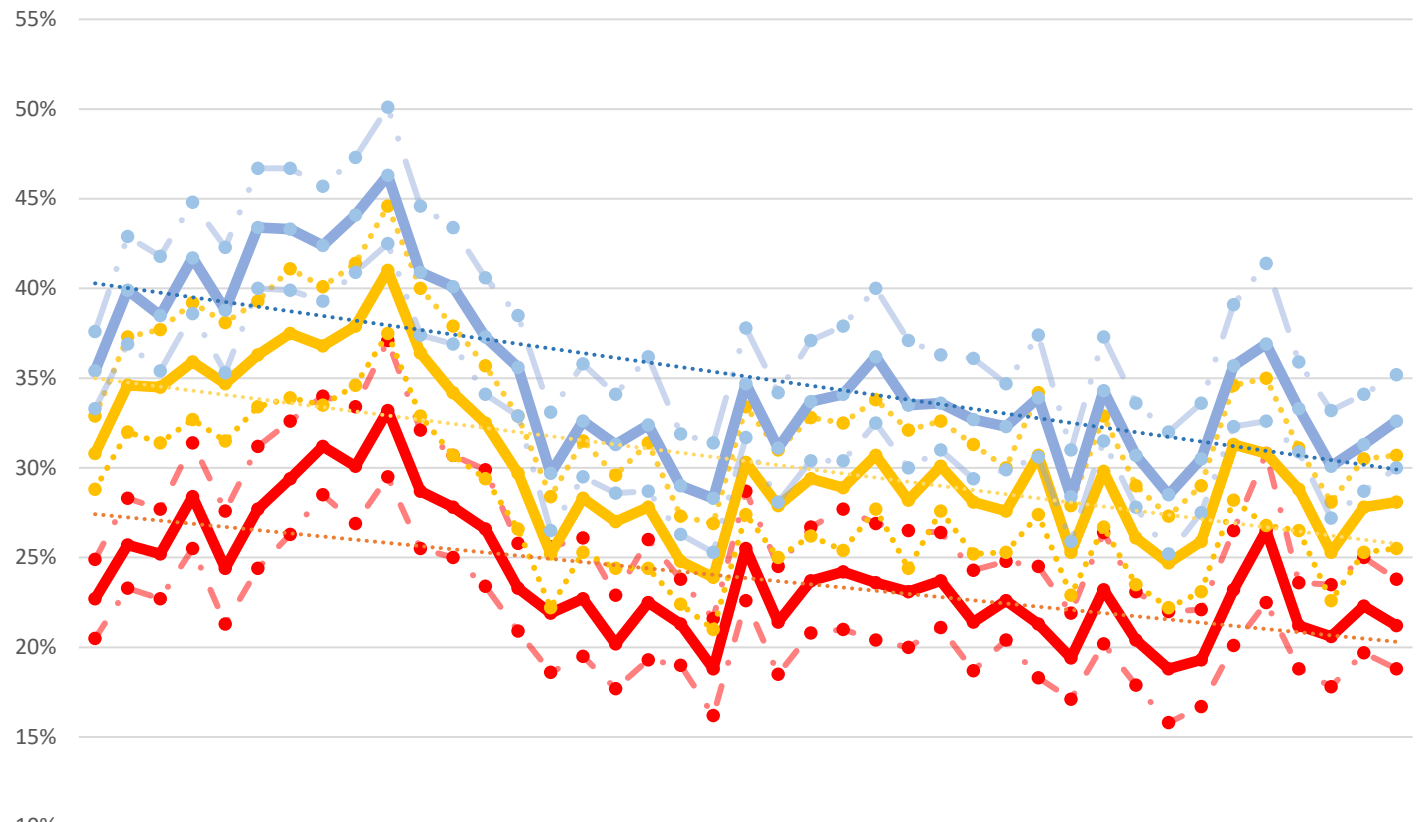
Crisis Service Unit Percent - Crisis Service units divided by Crisis units + Investigation units



Washington State Indicators of Anxiety or Depression Based on Reported Frequency of Symptoms During Last 7 Days

The U.S. Census Bureau, in collaboration with five federal agencies, launched the Household Pulse Survey to produce data on the social and economic impacts of Covid-19 on American households. The Household Pulse Survey was designed to gauge the impact of the pandemic on employment status, consumer spending, food security, housing, education disruptions, and dimensions of physical and mental wellness.

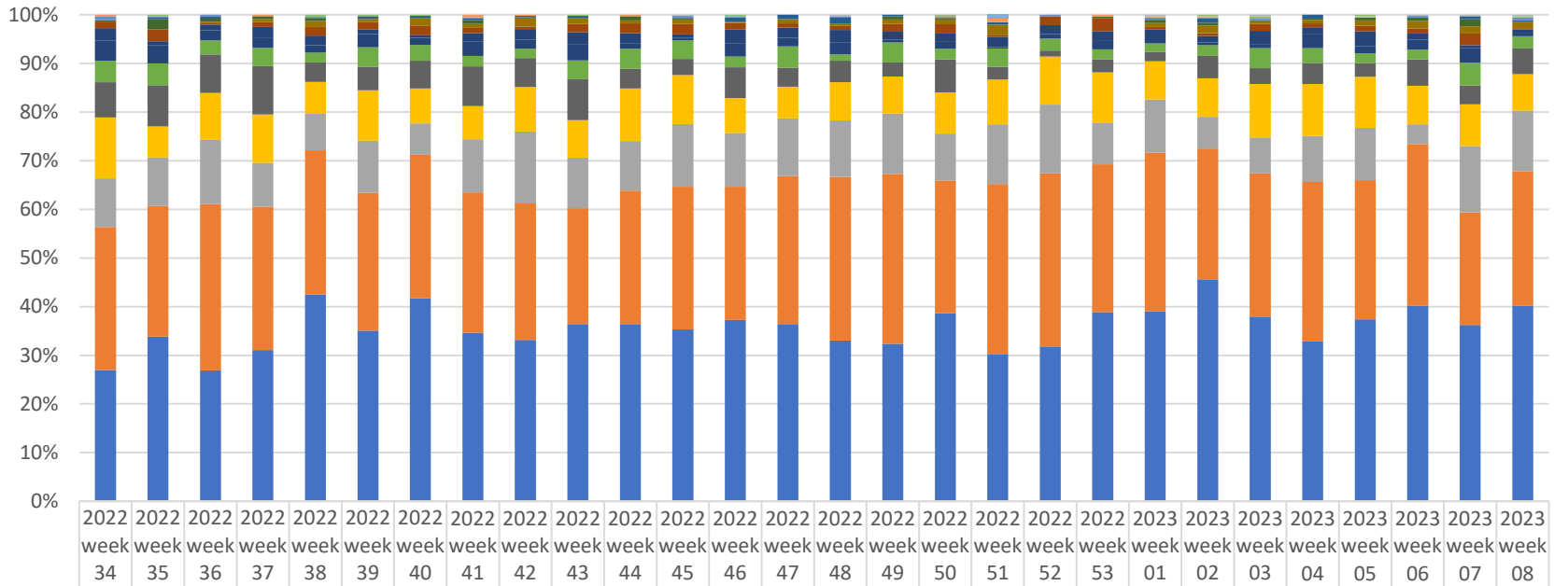
<https://data.cdc.gov/NCHS/Indicators-of-Anxiety-or-Depression-Based-on-Reported-Frequency-of-Symptoms-During-Last-7-Days>



Date	02 Sep '14	16 Sep '14	30 Sep '14	14 Oct '14	28 Oct '14	11 Nov '14	25 Nov '14	09 Dec '14	06 Jan '15	20 Jan '15	03 Feb '15	17 Feb '15	03 Mar '15	17 Mar '15	14 Apr '15	28 Apr '15	12 May '15	26 May '15	09 Jun '15	23 Jun '15	21 Jul '15	04 Aug '15	18 Aug '15	01 Sep '15	15 Sep '15	29 Sep '15	01 Oct '15	29 Oct '15	26 Nov '15	02 Dec '15	30 Dec '15	27 Jan '16	01 Feb '16	29 Feb '16	27 Mar '16	14 Apr '16	05 May '16	02 Jun '16	29 Jun '16	27 Jul '16	14 Aug '16	05 Sep '16	02 Oct '16	29 Nov '16	27 Dec '16	24 Jan '17	01 Feb '17
------	------------	------------	------------	------------	------------	------------	------------	------------	------------	------------	------------	------------	------------	------------	------------	------------	------------	------------	------------	------------	------------	------------	------------	------------	------------	------------	------------	------------	------------	------------	------------	------------	------------	------------	------------	------------	------------	------------	------------	------------	------------	------------	------------	------------	------------	------------	------------

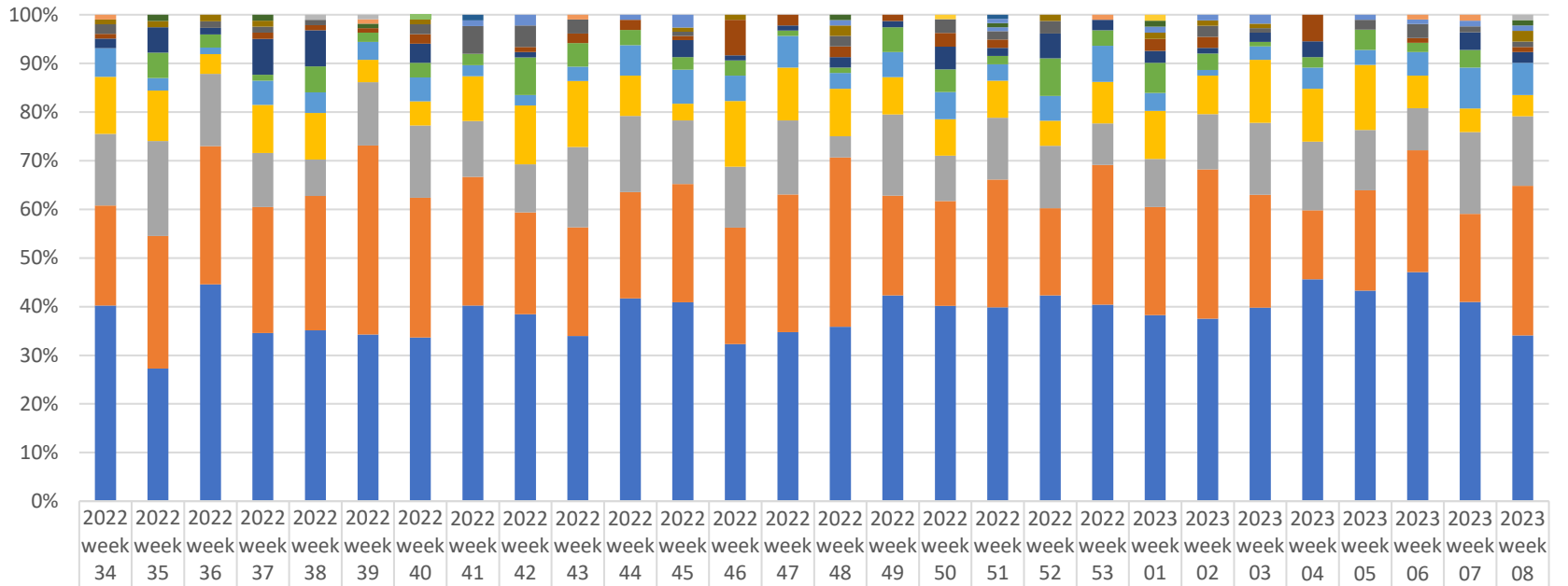
% with Symptoms of Depressive Disorder low conf. level	21%	23%	23%	26%	21%	24%	26%	29%	27%	30%	26%	25%	23%	21%	19%	20%	18%	19%	19%	16%	23%	19%	21%	21%	20%	20%	21%	19%	20%	18%	17%	20%	18%	16%	17%	20%	23%	19%	18%	20%	19%	
% with Symptoms of Depressive Disorder value	23%	26%	25%	28%	24%	28%	29%	31%	30%	33%	29%	28%	27%	23%	22%	23%	20%	23%	21%	19%	26%	21%	24%	24%	24%	23%	24%	21%	23%	21%	19%	23%	20%	19%	19%	23%	27%	21%	21%	22%	21%	
% with Symptoms of Depressive Disorder high conf. level	25%	28%	28%	31%	28%	31%	33%	34%	33%	37%	32%	31%	30%	26%	26%	26%	23%	26%	24%	22%	29%	25%	27%	28%	27%	27%	26%	24%	25%	25%	22%	26%	23%	22%	22%	27%	31%	24%	24%	25%	24%	
% with Symptoms of Anxiety Disorder low conf. level	29%	32%	31%	33%	32%	33%	34%	34%	35%	38%	33%	31%	29%	27%	22%	25%	28%	27%	28%	25%	24%	30%	28%	29%	29%	31%	28%	30%	28%	28%	31%	25%	30%	26%	25%	26%	31%	31%	29%	25%	28%	28%
% with Symptoms of Anxiety Disorder value	31%	35%	35%	36%	35%	36%	38%	37%	38%	41%	36%	34%	33%	30%	25%	28%	27%	28%	25%	24%	30%	28%	29%	29%	31%	28%	30%	28%	28%	31%	25%	30%	26%	25%	26%	31%	31%	29%	25%	28%	28%	
% with Symptoms of Anxiety Disorder high conf. level	33%	37%	38%	39%	38%	39%	41%	40%	41%	45%	40%	38%	36%	33%	28%	32%	30%	31%	27%	27%	33%	31%	33%	33%	34%	32%	33%	31%	30%	34%	28%	33%	29%	27%	29%	35%	35%	31%	28%	31%	31%	
% with Symptoms of Anxiety or Depressive Disorder low conf. level	33%	37%	35%	39%	35%	40%	40%	39%	41%	43%	37%	37%	34%	33%	27%	30%	29%	29%	26%	25%	32%	28%	30%	30%	33%	30%	31%	29%	30%	31%	26%	32%	28%	25%	28%	32%	33%	31%	27%	29%	30%	
% with Symptoms of Anxiety or Depressive Disorder value	35%	40%	39%	42%	39%	43%	43%	42%	44%	46%	41%	40%	37%	36%	30%	33%	31%	32%	29%	28%	35%	31%	34%	34%	36%	34%	34%	33%	32%	34%	28%	34%	31%	29%	31%	36%	37%	33%	30%	31%	33%	
% with Symptoms of Anxiety or Depressive Disorder high conf. level	38%	43%	42%	45%	42%	47%	47%	46%	47%	50%	45%	43%	41%	39%	33%	36%	34%	36%	32%	31%	38%	34%	37%	38%	40%	37%	36%	36%	35%	37%	31%	37%	34%	32%	34%	39%	41%	36%	33%	34%	35%	

Place of Service -Crisis Services, percent of total by week



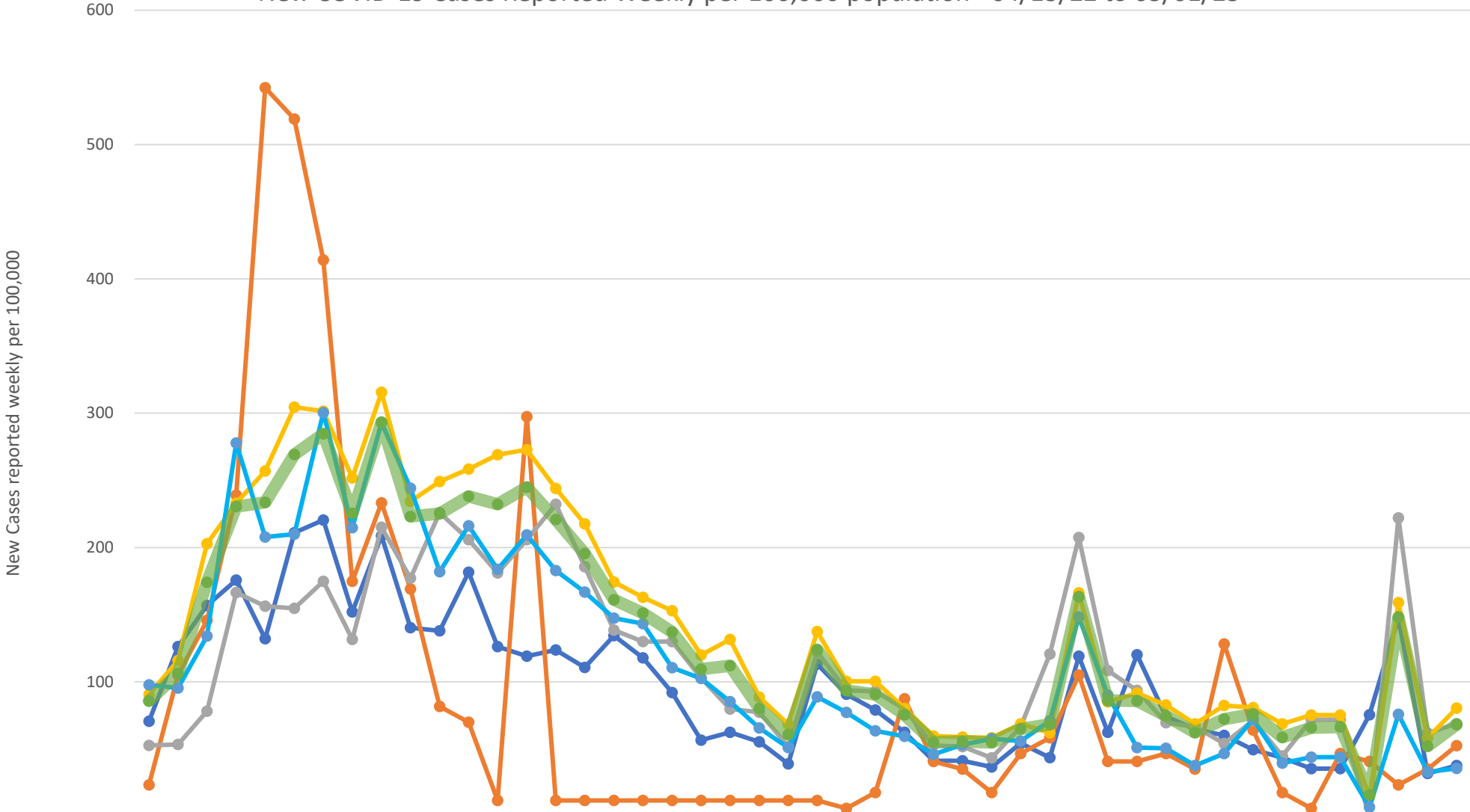
	2022 week 34	2022 week 35	2022 week 36	2022 week 37	2022 week 38	2022 week 39	2022 week 40	2022 week 41	2022 week 42	2022 week 43	2022 week 44	2022 week 45	2022 week 46	2022 week 47	2022 week 48	2022 week 49	2022 week 50	2022 week 51	2022 week 52	2022 week 53	2023 week 01	2023 week 02	2023 week 03	2023 week 04	2023 week 05	2023 week 06	2023 week 07	2023 week 08
Custodial Care Facility				1			1																			1		
Skilled Nursing Facility																		3										
Community Mental Health Center												1			1						1		1		1	1	1	1
On Campus Outpatient Hospital		1			1	1				1			1				1					1	2					1
Nursing Facility	1			1				2	1		1						1	3		1	1	1						
Psych. Residential	3	1	1					1				1	1		1				1		1	1	1			1		2
Group Home		1	1		1	1	2	1	1	2		1	3	3	4	1	1	2			1	3		3		1	2	1
Homeless Shelter	1	7	3	2	2	1		3			3	1				2	1			1	2	2	1	1	2	2	5	
School			1	2	5	2	6	3	7	5	2	4	1	3	1	3	4	8			3	6	2	3	4	6	5	5
Inpatient Hospital	5	8	1	3	7	5	8	4	2	7	7	9	5	3	3	5	8	2	6	8	2	2	5	3	4	4	8	1
Inpatient Psychiatric Facility	9	3	4	7	8	3	2	6	8	10	7	3	10	7	8	5	7	8	6	6	7	5	10	6	11	5	2	3
Telehealth	15	12	7	7	6	9	6	11	7	14	4	2	10	6	8	2	6	1	3	5	3	2	3	11	5	8	10	2
Prison Correctional Facility	16	15	10	12	8	13	13	8	7	16	14	16	8	15	4	13	9	15	8	6	6	8	15	12	7	8	16	9
Assisted Living Facility	26	28	27	32	16	16	23	30	22	35	14	14	23	13	14	9	28	10	4	8	7	17	12	17	10	21	13	19
Emergency Room Hospital	45	21	33	32	26	34	29	25	34	32	37	42	26	22	25	24	35	36	32	31	28	29	40	42	37	31	29	27
Home	36	33	45	29	30	35	26	40	55	43	35	54	40	40	37	39	40	48	46	25	39	24	27	37	38	16	46	45
Other Place of Service	106	89	117	95	118	93	119	106	104	99	94	123	99	103	107	110	113	137	116	90	116	99	108	129	101	130	78	100
Office	97	112	92	100	169	115	168	127	123	151	125	148	135	123	105	102	160	118	103	115	139	167	138	129	132	157	122	145

Place of Service -Investigations, percent of total by week



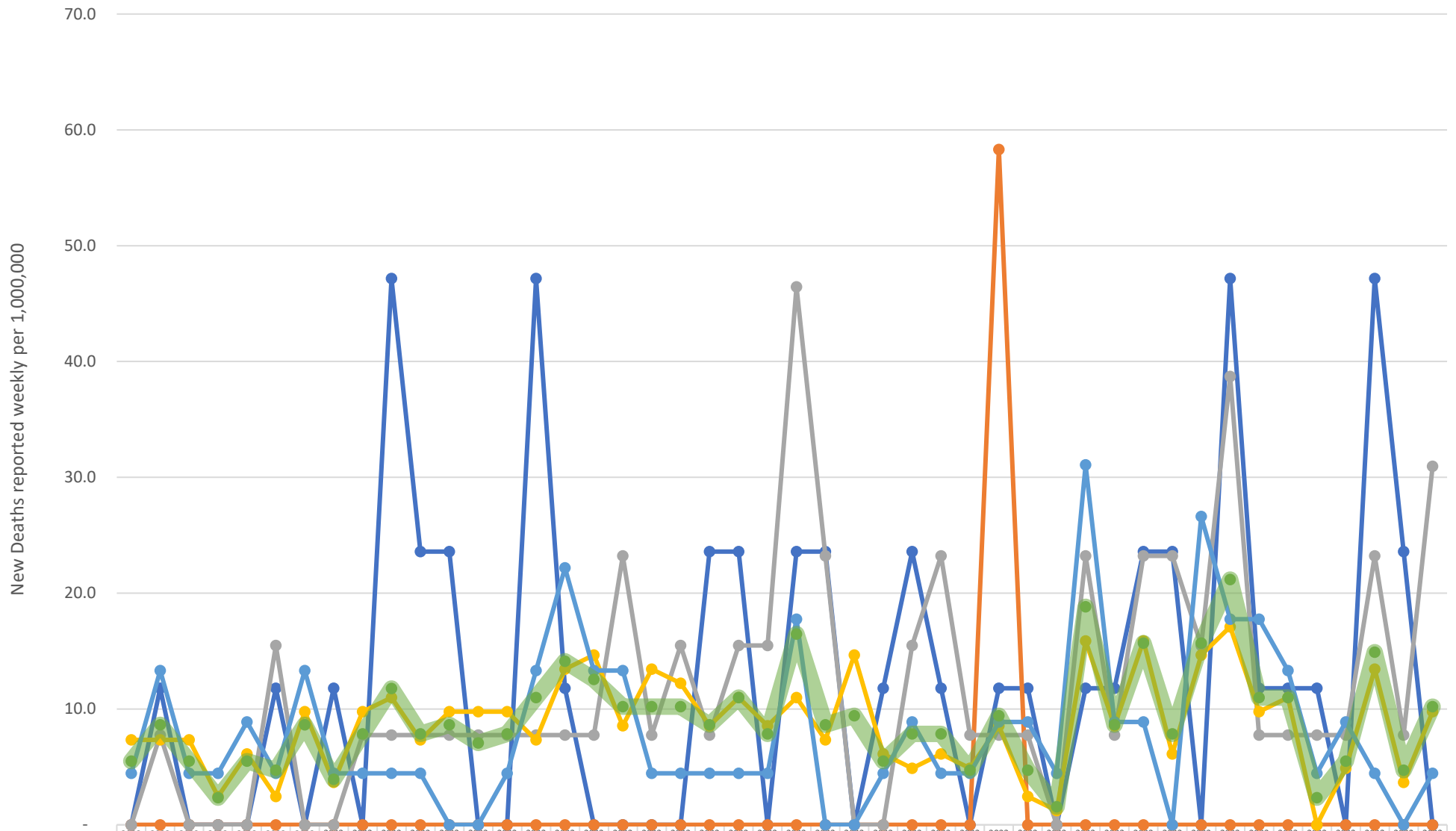
	2022 week 34	2022 week 35	2022 week 36	2022 week 37	2022 week 38	2022 week 39	2022 week 40	2022 week 41	2022 week 42	2022 week 43	2022 week 44	2022 week 45	2022 week 46	2022 week 47	2022 week 48	2022 week 49	2022 week 50	2022 week 51	2022 week 52	2022 week 53	2023 week 01	2023 week 02	2023 week 03	2023 week 04	2023 week 05	2023 week 06	2023 week 07	2023 week 08	
Custodial Care Facility							1																						
Skilled Nursing Facility								1										1											
Nursing Facility																	1					1							
On Campus Outpatient Hospital					1	1																							1
Homeless Shelter	1					1				1										1						1	1		
School								1	2		1							1					1				1		
Telehealth		1		1		1									1			1			1								1
Community Mental Health Center												3			1			1			1		2		1	1		1	
Psych. Residential	1	1	1	1			1					1	1		2				1		1	1	1					2	
Assisted Living Facility	2		1	1	1		2	5	4	3		1			2		3	2	2			2	1		2	3	1	1	
Group Home	1			1	1	1	2		1	2	2	1	7	2	2	1	3	2			2	2		5		1		1	
Home	2	4	1	6	7		4		1			4	1	1	2	1	5	2	4	2	2	1	2	3			3	2	
Office		4	2	1	5	2	3	2	7	5	3	3	3	1	1	4	5	2	6	3	5	3	1	2	4	2	3		
Inpatient Hospital	6	2	1	4	4	4	5	2	2	3	6	8	5	6	3	4	6	4	4	7	3	1	3	4	3	5	7	6	
Inpatient Psychiatric Facility	12	8	3	8	9	5	5	8	11	14	8	4	13	10	9	6	8	9	4	8	8	7	14	10	13	7	4	4	
Prison Correctional Facility	15	15	11	9	7	14	15	10	9	17	15	15	12	14	4	13	10	15	10	8	8	10	16	13	12	9	14	13	
Other Place of Service	21	21	21	21	26	42	29	23	19	23	21	28	23	26	32	16	23	31	14	27	18	27	25	13	20	26	15	28	
Emergency Room Hospital	41	21	33	28	33	37	34	35	35	35	40	47	31	32	33	33	43	47	33	38	31	33	43	42	42	49	34	31	

New COVID-19 Cases Reported Weekly per 100,000 population - 04/13/22 to 03/01/23



	2022 Week 15	2022 Week 16	2022 Week 17	2022 Week 18	2022 Week 19	2022 Week 20	2022 Week 21	2022 Week 22	2022 Week 23	2022 Week 24	2022 Week 25	2022 Week 26	2022 Week 27	2022 Week 28	2022 Week 29	2022 Week 30	2022 Week 31	2022 Week 32	2022 Week 33	2022 Week 34	2022 Week 35	2022 Week 36	2022 Week 37	2022 Week 38	2022 Week 39	2022 Week 40	2022 Week 41	2022 Week 42	2022 Week 43	2022 Week 44	2022 Week 45	2022 Week 46	2022 Week 48	2022 Week 49	2022 Week 50	2022 Week 51	2022 Week 52	2023 Week 01	2023 Week 02	2023 Week 03	2023 Week 04	2023 Week 05	2023 Week 06	2023 Week 07	2023 Week 08	2023 Week 09	
Island	71	126	157	176	132	211	220	152	209	140	138	182	126	119	124	111	134	118	92	57	62	55	39	113	91	79	62	41	41	37	54	44	119	62	120	74	65	60	50	44	35	35	75	147	32	38	
San Juan	23	105	146	239	542	519	414	175	233	169	82	70	12	297	12	12	12	12	12	12	12	12	12	12	12	6	17	87	41	35	17	47	58	105	41	41	47	35	128	64	17	6	47	41	23	35	52
Skagit	53	53	78	166	156	155	175	132	215	177	226	206	181	206	232	186	139	130	130	103	80	77	52	122	94	93	80	53	52	43	67	121	207	108	94	70	67	54	71	45	72	72	-	222	62	69	
Snohomish	91	116	203	233	257	305	301	252	316	234	249	258	269	273	244	218	174	163	153	120	132	89	68	137	100	100	80	60	59	58	69	62	166	85	92	83	69	82	81	69	75	75	14	159	58	80	
Whatcom	98	95	134	278	208	210	300	215	293	244	182	216	184	209	183	167	147	143	111	103	85	66	51	89	77	63	59	46	53	58	56	71	148	90	51	51	38	47	72	40	44	44	7	76	33	36	
Region	86	106	174	230	234	269	285	225	293	223	225	238	232	245	221	196	161	151	137	110	112	80	61	124	94	91	75	55	56	55	65	68	163	86	86	75	62	72	76	59	66	66	16	148	52	68	

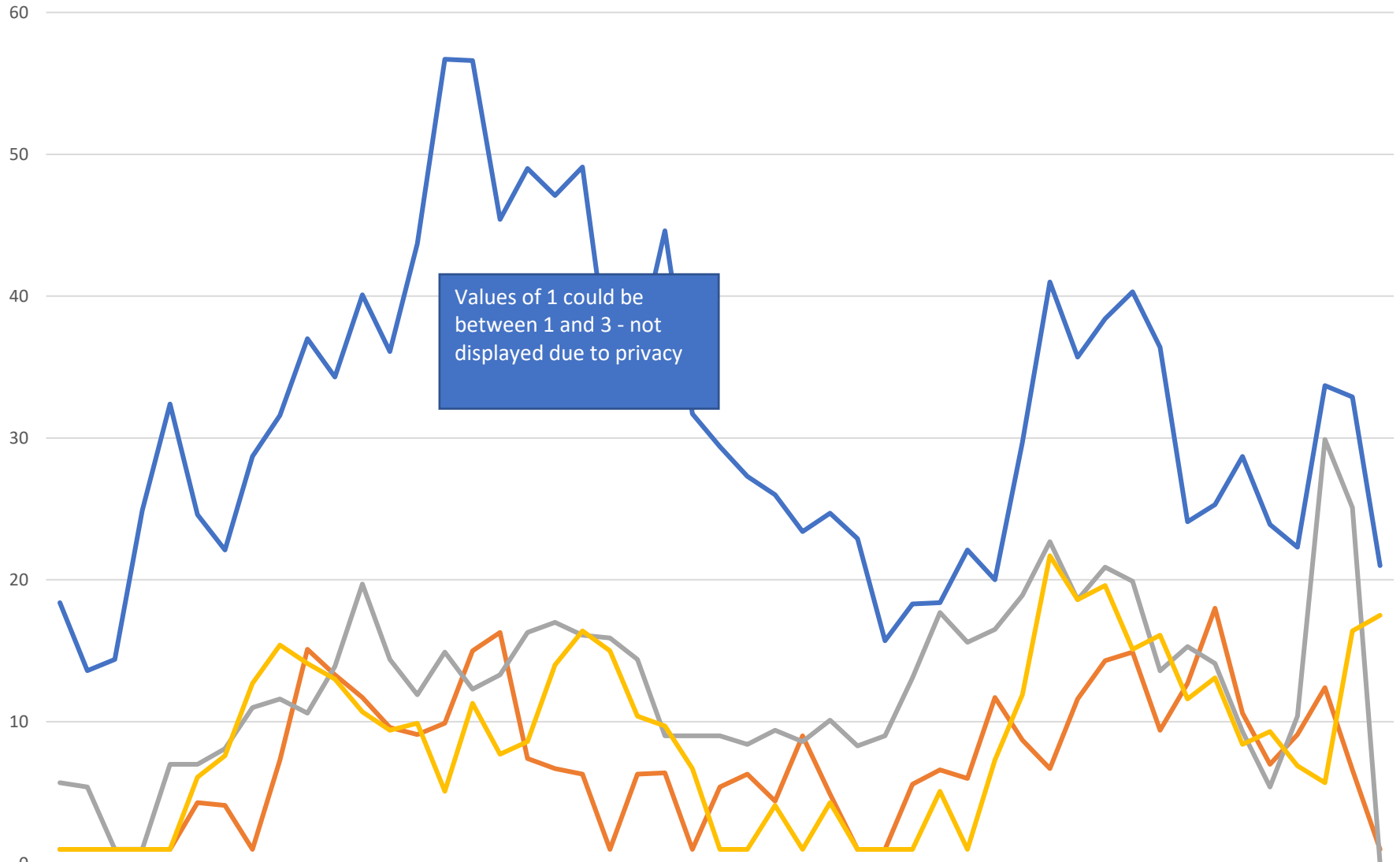
New COVID-19 Deaths Reported Weekly per 1,000,000 population - 04/13/22 to 03/01/23



	2022 Week 15	2022 Week 16	2022 Week 17	2022 Week 18	2022 Week 19	2022 Week 20	2022 Week 21	2022 Week 22	2022 Week 23	2022 Week 24	2022 Week 25	2022 Week 26	2022 Week 27	2022 Week 28	2022 Week 29	2022 Week 30	2022 Week 31	2022 Week 32	2022 Week 33	2022 Week 34	2022 Week 35	2022 Week 36	2022 Week 37	2022 Week 38	2022 Week 39	2022 Week 40	2022 Week 41	2022 Week 42	2022 Week 43	2022 Week 44	2022 Week 45	2022 Week 46	2022 Week 48	2022 Week 49	2022 Week 50	2022 Week 51	2022 Week 52	2023 Week 01	2023 Week 02	2023 Week 03	2023 Week 04	2023 Week 05	2023 Week 06	2023 Week 07	2023 Week 08	2023 Week 09	
Island	-	11.8	-	-	-	11.8	-	11.8	-	47.2	23.6	23.6	-	-	47.2	11.8	-	-	-	-	23.6	23.6	-	23.6	23.6	-	11.8	23.6	11.8	-	11.8	11.8	-	11.8	11.8	23.6	23.6	-	47.2	11.8	11.8	11.8	-	47.2	23.6	-	
San Juan	-	-	-	-	-	-	-	-	-	-	-	-	-	-	-	-	-	-	-	-	-	-	-	-	-	-	-	-	-	58.3	-	-	-	-	-	-	-	-	-	-	-	-	-	-	-		
Skagit	-	7.7	-	-	-	15.5	-	-	7.7	7.7	7.7	7.7	7.7	7.7	7.7	7.7	7.7	23.2	7.7	15.5	7.7	15.5	15.5	46.4	23.2	-	-	15.5	23.2	7.7	7.7	7.7	-	23.2	7.7	23.2	23.2	15.5	38.7	7.7	7.7	7.7	7.7	23.2	7.7	31.0	
Snohomish	7.3	7.3	7.3	2.4	6.1	2.4	9.8	3.7	9.8	11.0	7.3	9.8	9.8	9.8	7.3	13.4	14.7	8.6	13.4	12.2	8.6	11.0	8.6	11.0	7.3	14.7	6.1	4.9	6.1	4.9	8.6	2.4	1.2	15.9	8.6	15.9	6.1	14.7	17.1	9.8	11.0	-	4.9	13.4	3.7	9.8	
Whatcom	4.4	13.3	4.4	4.4	8.9	4.4	13.3	4.4	4.4	4.4	4.4	-	-	4.4	13.3	22.2	13.3	13.3	4.4	4.4	4.4	4.4	4.4	4.4	17.8	-	-	4.4	8.9	4.4	4.4	8.9	8.9	4.4	31.1	8.9	8.9	-	26.6	17.8	17.8	13.3	4.4	8.9	4.4	-	4.4
Region	5.5	8.6	5.5	2.4	5.5	4.7	8.6	3.9	7.8	11.8	7.8	8.6	7.1	7.8	11.0	14.1	12.5	10.2	10.2	10.2	8.6	11.0	7.8	16.5	8.6	9.4	5.5	7.8	7.8	4.7	9.4	4.7	1.6	18.8	8.6	15.7	7.8	15.7	21.2	11.0	11.0	2.4	5.5	14.9	4.7	10.2	

Island San Juan Skagit Snohomish Whatcom Region

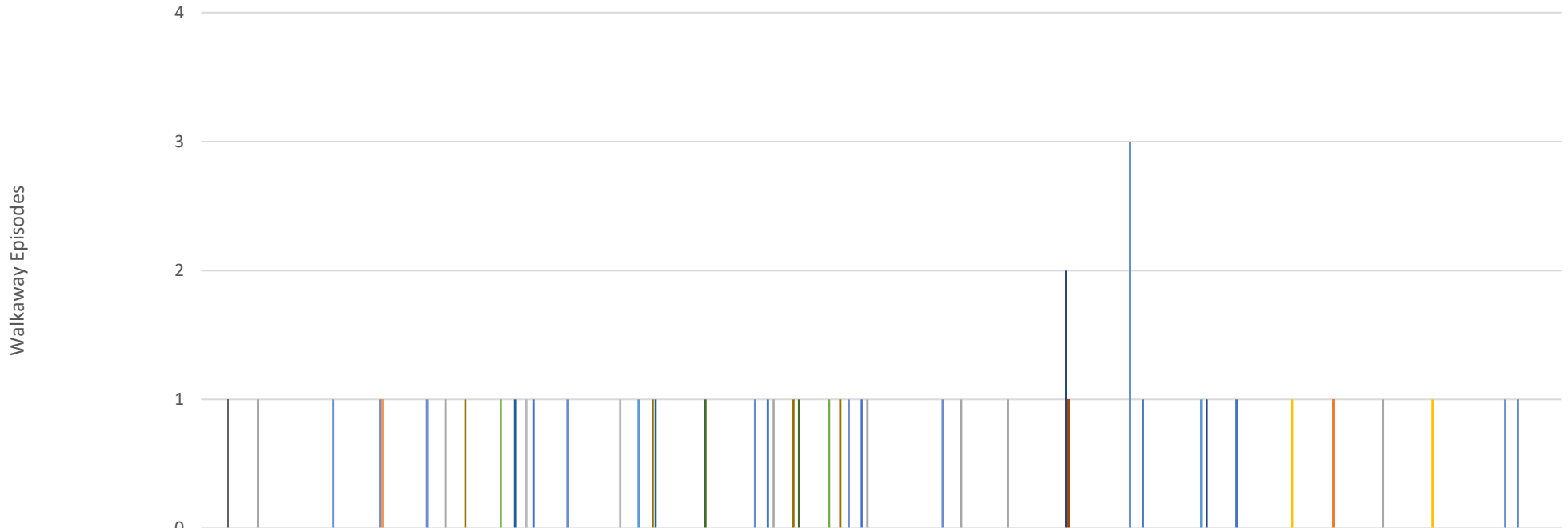
Total Hospitalized Adults - COVID-19 (confirmed or suspected) 7 day average



Values of 1 could be between 1 and 3 - not displayed due to privacy

	3/2/2022	4/1/2022	4/8/2022	4/15/2022	4/22/2022	4/29/2022	5/6/2022	5/13/2022	5/20/2022	5/27/2022	6/3/2022	6/10/2022	6/17/2022	6/24/2022	7/1/2022	7/8/2022	7/15/2022	7/22/2022	7/29/2022	8/5/2022	8/12/2022	8/19/2022	8/26/2022	9/2/2022	9/9/2022	9/16/2022	9/23/2022	10/1/2022	10/8/2022	10/15/2022	10/22/2022	10/29/2022	11/5/2022	11/12/2022	11/19/2022	11/26/2022	12/3/2022	12/10/2022	12/17/2022	12/24/2022	1/1/2023	1/8/2023	1/15/2023	1/22/2023	1/29/2023	2/5/2023	2/12/2023		
Prov. Everett	18.4	13.6	14.4	24.9	32.4	24.6	22.1	28.7	31.6	37	34.3	40.1	36.1	43.7	56.7	56.6	45.4	49	47.1	49.1	34.7	36.1	44.6	31.7	29.4	27.3	26	23.4	24.7	22.9	15.7	18.3	18.4	22.1	20	29.7	41	35.7	38.4	40.3	36.4	24.1	25.3	28.7	23.9	22.3	33.7	32.9	21
SVH	1	1	1	1	1	4.3	4.1	1	7.3	15.1	13.3	11.7	9.6	9.1	9.9	15	16.3	7.4	6.7	6.3	1	6.3	6.4	1	5.4	6.3	4.4	9	4.9	1	1	5.6	6.6	6	11.7	8.7	6.7	11.6	14.3	14.9	9.4	12.7	18	10.6	7	9.1	12.4	6.6	1
ST Joe	5.7	5.4	1	1	7	7	8.1	11	11.6	10.6	13.9	19.7	14.4	11.9	14.9	12.3	13.3	16.3	17	16.1	15.9	14.4	9	9	9	8.4	9.4	8.6	10.1	8.3	9	13.1	17.7	15.6	16.5	18.9	22.7	18.6	20.9	19.9	13.6	15.3	14.1	9.3	5.4	10.4	29.9	25.1	0
Swedish Edmonds	1	1	1	1	1	6.1	7.6	12.7	15.4	14.1	13	10.7	9.4	9.9	5.1	11.3	7.7	8.6	14	16.4	15	10.4	9.7	6.7	1	1	4.1	1	4.3	1	1	1	5.1	1	7.3	11.9	21.7	18.6	19.6	15.1	16.1	11.6	13.1	8.4	9.3	6.9	5.7	16.4	17.5

North Sound BH ASO Walkaway Chart 08/14/22 to 02/25/23



	2022 Week 15	2022 Week 16	2022 Week 17	2022 Week 18	2022 Week 19	2022 Week 22	2022 Week 24	2022 Week 25	2022 Week 26	2022 Week 27	2022 Week 28	2022 Week 30	2022 Week 32	2022 Week 33	2022 Week 37	2022 Week 39	2022 Week 40	2022 Week 41	2022 Week 43	2022 Week 45	2022 Week 47	2022 Week 48	2022 Week 49	2022 Week 50	2022 Week 51	2022 Week 53	2023 Week 02	2023 Week 04	2023 Week 05
Cascade Valley Hospital								1					1		1						1		1						1
Island Health																										1			
Island Hospital		1				1							1		1		1	1									1		
Peace Health United																								1			1		
Peace Island Health										1												1							
Providence						1								1															
Providence, Everett																				2		1							
San Juan Co Jail																				1									
Skagit Valley	1																												
St. Joseph						1				1			1	1															
Swedish Edmonds						1				1																			
Swedish Mill Creek											1		1																
United General			1	1	1				1			1		1		1					3							1	
Whidbey Health				1																									
Whidbey Health ED						1		1																					